

Anti-BAG2 Monoclonal Antibody Catalog # ABO14592

Specification

Anti-BAG2 Monoclonal Antibody - Product Information

Application	WB, IF, ICC
Primary Accession	O95816
Host	Rabbit
Isotype	Rabbit IgG
Reactivity	Rat, Human, Mouse
Clonality	Monoclonal
Format	Liquid

Description

Anti-BAG2 Monoclonal Antibody . Tested in WB, ICC/IF applications. This antibody reacts with Human, Mouse, Rat.

Anti-BAG2 Monoclonal Antibody - Additional Information

Gene ID 9532

Other Names

BAG family molecular chaperone regulator 2, BAG-2, Bcl-2-associated athanogene 2, BAG2

Application Details

WB 1:500-1:2000
ICC/IF 1:50-1:200

Contents

Rabbit IgG in phosphate buffered saline, pH 7.4, 150mM NaCl, 0.02% sodium azide and 50% glycerol, 0.4-0.5mg/ml BSA.

Immunogen

A synthesized peptide derived from human BAG2 Inhibits the chaperone activity of HSP70/HSC70 by promoting substrate release.

Purification

Affinity-chromatography

Storage

Store at -20°C for one year. For short term storage and frequent use, store at 4°C for up to one month. Avoid repeated freeze-thaw cycles.

Anti-BAG2 Monoclonal Antibody - Protein Information

Name BAG2

Function

Co-chaperone for HSP70 and HSC70 chaperone proteins. Acts as a nucleotide-exchange factor

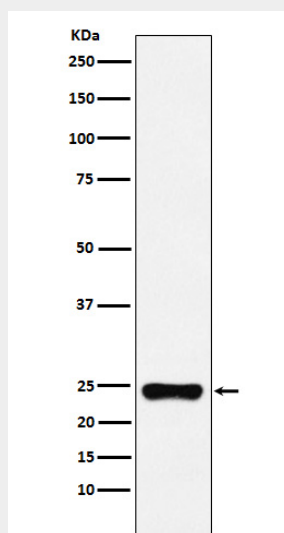
(NEF) promoting the release of ADP from the HSP70 and HSC70 proteins thereby triggering client/substrate protein release (PubMed:24318877, PubMed:9873016).

Anti-BAG2 Monoclonal Antibody - Protocols

Provided below are standard protocols that you may find useful for product applications.

- [Western Blot](#)
- [Blocking Peptides](#)
- [Dot Blot](#)
- [Immunohistochemistry](#)
- [Immunofluorescence](#)
- [Immunoprecipitation](#)
- [Flow Cytometry](#)
- [Cell Culture](#)

Anti-BAG2 Monoclonal Antibody - Images



Western blot analysis of BAG2 expression in HeLa cell lysate.