

## Anti-PFKFB3 Monoclonal Antibody Catalog # ABO14585

### Specification

---

#### Anti-PFKFB3 Monoclonal Antibody - Product Information

Application	WB, IHC, IF, ICC, IP, FC
Primary Accession	<a href="#">Q16875</a>
Host	Rabbit
Isotype	Rabbit IgG
Reactivity	Rat, Human, Mouse
Clonality	Monoclonal
Format	Liquid

#### Description

Anti-PFKFB3 Monoclonal Antibody . Tested in WB, IHC, ICC/IF, IP, Flow Cytometry applications. This antibody reacts with Human, Mouse, Rat.

#### Anti-PFKFB3 Monoclonal Antibody - Additional Information

Gene ID 5209

#### Other Names

6-phosphofructo-2-kinase/fructose-2, 6-bisphosphatase 3, 6PF-2-K/Fru-2, 6-P2ase 3, PFK/FBPase 3, 6PF-2-K/Fru-2, 6-P2ase brain/placenta-type isozyme, Renal carcinoma antigen NY-REN-56, iPFK-2, 6-phosphofructo-2-kinase, 2.7.1.105, Fructose-2, 6-bisphosphatase, 3.1.3.46, PFKFB3

#### Application Details

WB 1:500-1:2000<br>IHC 1:50-1:200<br>ICC/IF 1:50-1:200<br>IP 1:50<br>FC 1:50

#### Contents

Rabbit IgG in phosphate buffered saline, pH 7.4, 150mM NaCl, 0.02% sodium azide and 50% glycerol, 0.4-0.5mg/ml BSA.

#### Immunogen

A synthesized peptide derived from human PFKFB3.

#### Purification

Affinity-chromatography

#### Storage

Store at -20°C for one year. For short term storage and frequent use, store at 4°C for up to one month. Avoid repeated freeze-thaw cycles.

#### Anti-PFKFB3 Monoclonal Antibody - Protein Information

Name PFKFB3

Function

Catalyzes both the synthesis and degradation of fructose 2,6- bisphosphate.

#### Tissue Location

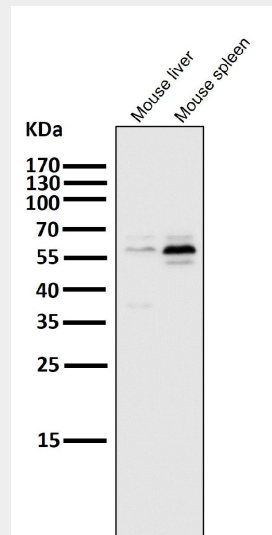
Ubiquitous.

#### Anti-PFKFB3 Monoclonal Antibody - Protocols

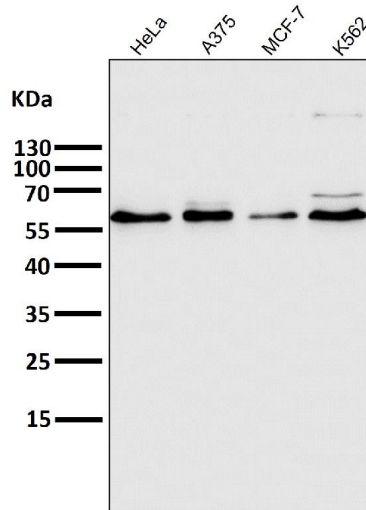
Provided below are standard protocols that you may find useful for product applications.

- [Western Blot](#)
- [Blocking Peptides](#)
- [Dot Blot](#)
- [Immunohistochemistry](#)
- [Immunofluorescence](#)
- [Immunoprecipitation](#)
- [Flow Cytometry](#)
- [Cell Culture](#)

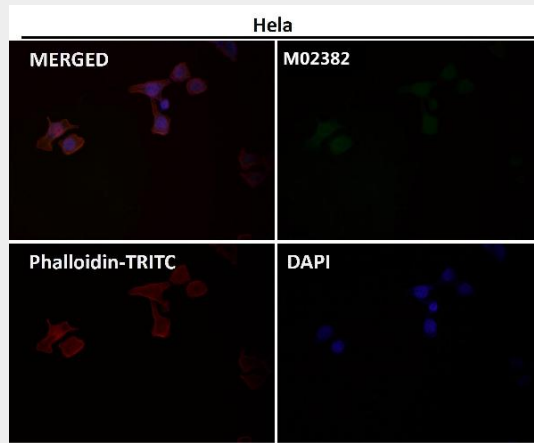
#### Anti-PFKFB3 Monoclonal Antibody - Images



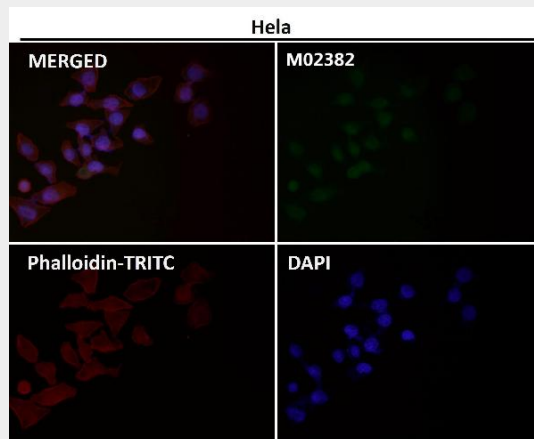
All lanes use the Antibody at 1:3K dilution for 1 hour at room temperature.



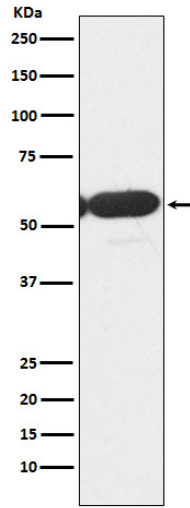
All lanes use the Antibody at 1:3K dilution for 1 hour at room temperature.



Immunofluorescent analysis using the Antibody at 1:50 dilution.



Immunofluorescent analysis using the Antibody at 1:150 dilution.



Western blot analysis of PFKFB3 expression in Jurkat cell lysate.