

**Anti-MBD2 Rabbit Monoclonal Antibody**  
Catalog # ABO14584**Specification****Anti-MBD2 Rabbit Monoclonal Antibody - Product Information**

Application	WB, IHC, IF, ICC, IP, FC
Primary Accession	<a href="#">Q9UBB5</a>
Host	Rabbit
Isotype	Rabbit IgG
Reactivity	Rat, Human, Mouse
Clonality	Monoclonal
Format	Liquid

**Description**

Anti-MBD2 Rabbit Monoclonal Antibody . Tested in WB, IHC, ICC/IF, IP, Flow Cytometry applications. This antibody reacts with Human, Mouse, Rat.

**Anti-MBD2 Rabbit Monoclonal Antibody - Additional Information**

Gene ID 8932

**Other Names**

Methyl-CpG-binding domain protein 2, Demethylase, DMTase, Methyl-CpG-binding protein MBD2, MBD2 ([HGNC:6917](http://www.genenames.org/cgi-bin/gene_symbol_report?hgnc_id=6917))

**Application Details**

WB 1:5000-1:10000<br>IHC 1:50-1:200<br>ICC/IF 1:50-1:200<br>IP 1:50<br>FC 1:50

**Contents**

Rabbit IgG in phosphate buffered saline, pH 7.4, 150mM NaCl, 0.02% sodium azide and 50% glycerol, 0.4-0.5mg/ml BSA.

**Immunogen**

A synthesized peptide derived from human MBD2

**Purification**

Affinity-chromatography

**Storage**

Store at -20°C for one year. For short term storage and frequent use, store at 4°C for up to one month. Avoid repeated freeze-thaw cycles.

**Anti-MBD2 Rabbit Monoclonal Antibody - Protein Information**

Name MBD2 ([HGNC:6917](#))

**Function**

Binds CpG islands in promoters where the DNA is methylated at position 5 of cytosine within CpG dinucleotides (PubMed:<a href="http://www.uniprot.org/citations/9774669" target="\_blank">9774669</a>). Binds hemimethylated DNA as well (PubMed:<a href="http://www.uniprot.org/citations/10947852" target="\_blank">10947852</a>, PubMed:<a href="http://www.uniprot.org/citations/24307175" target="\_blank">24307175</a>). Recruits histone deacetylases and DNA methyltransferases to chromatin (PubMed:<a href="http://www.uniprot.org/citations/10471499" target="\_blank">10471499</a>, PubMed:<a href="http://www.uniprot.org/citations/10947852" target="\_blank">10947852</a>). Acts as a component of the histone deacetylase NuRD complex which participates in the remodeling of chromatin (PubMed:<a href="http://www.uniprot.org/citations/16428440" target="\_blank">16428440</a>, PubMed:<a href="http://www.uniprot.org/citations/28977666" target="\_blank">28977666</a>). Acts as a transcriptional repressor and plays a role in gene silencing (PubMed:<a href="http://www.uniprot.org/citations/10471499" target="\_blank">10471499</a>, PubMed:<a href="http://www.uniprot.org/citations/10947852" target="\_blank">10947852</a>, PubMed:<a href="http://www.uniprot.org/citations/16415179" target="\_blank">16415179</a>). Functions as a scaffold protein, targeting GATAD2A and GATAD2B to chromatin to promote repression (PubMed:<a href="http://www.uniprot.org/citations/16415179" target="\_blank">16415179</a>). May enhance the activation of some unmethylated cAMP-responsive promoters (PubMed:<a href="http://www.uniprot.org/citations/12665568" target="\_blank">12665568</a>).

#### Cellular Location

Nucleus. Chromosome Note=Nuclear, in discrete foci (PubMed:12183469). Detected at replication foci in late S phase. Localizes to methylated chromatin (PubMed:16428440). Localizes to sites of DNA damage in a manner partially dependent on ZMYND8 (PubMed:27732854)

#### Tissue Location

Highly expressed in brain, heart, kidney, stomach, testis and placenta.

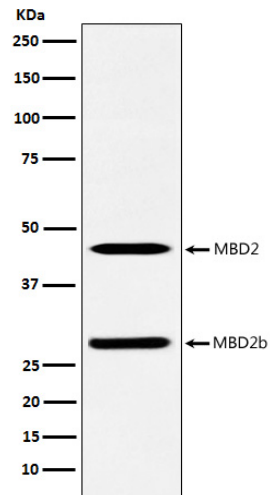
### Anti-MBD2 Rabbit Monoclonal Antibody - Protocols

Provided below are standard protocols that you may find useful for product applications.

- [Western Blot](#)
- [Blocking Peptides](#)
- [Dot Blot](#)
- [Immunohistochemistry](#)
- [Immunofluorescence](#)
- [Immunoprecipitation](#)
- [Flow Cytometry](#)
- [Cell Culture](#)

### Anti-MBD2 Rabbit Monoclonal Antibody - Images





Western blot analysis of MBD2 expression in A375 cell lysate.