

## Anti-CD23 FCER2 Monoclonal Antibody Catalog # ABO14579

### Specification

---

#### Anti-CD23 FCER2 Monoclonal Antibody - Product Information

Application	WB, IHC, FC
Primary Accession	<a href="#">P06734</a>
Host	Rabbit
Isotype	Rabbit IgG
Reactivity	Human
Clonality	Monoclonal
Format	Liquid

#### Description

Anti-CD23 FCER2 Monoclonal Antibody . Tested in WB, IHC, Flow Cytometry applications. This antibody reacts with Human.

#### Anti-CD23 FCER2 Monoclonal Antibody - Additional Information

Gene ID 2208

#### Other Names

Low affinity immunoglobulin epsilon Fc receptor, BLAST-2, C-type lectin domain family 4 member J, Fc-epsilon-R1I, Immunoglobulin E-binding factor, Lymphocyte IgE receptor, CD23, Low affinity immunoglobulin epsilon Fc receptor membrane-bound form, Low affinity immunoglobulin epsilon Fc receptor soluble form, FCER2, CD23A, CLEC4J, FCE2, IGEBF

#### Application Details

WB 1:500-1:1000<br>IHC 1:50-1:200<br>FC 1:30

#### Contents

Rabbit IgG in phosphate buffered saline, pH 7.4, 150mM NaCl, 0.02% sodium azide and 50% glycerol, 0.4-0.5mg/ml BSA.

#### Immunogen

A synthesized peptide derived from human CD23 This receptor has essential roles in the regulation of IgE production and in the differentiation of B-cells (it is a B-cell-specific antigen).

#### Purification

Affinity-chromatography

Storage

**Store at -20°C for one year. For short term storage and frequent use, store at 4°C for up to one month. Avoid repeated freeze-thaw cycles.**

#### Anti-CD23 FCER2 Monoclonal Antibody - Protein Information

Name FCER2

**Synonyms** CD23A, CLEC4J, FCE2, IGEBF

### Function

Low-affinity receptor for immunoglobulin E (IgE) and CR2/CD21. Has essential roles in the regulation of IgE production and in the differentiation of B cells. On B cells, initiates IgE-dependent antigen uptake and presentation to T cells (PubMed: [2167225](http://www.uniprot.org/citations/2167225)). On macrophages, upon IgE binding and antigen cross-linking induces intracellular killing of parasites through activation of L-Arginine- nitric oxide pathway (PubMed: [7544003](http://www.uniprot.org/citations/7544003)).

### Cellular Location

Cell membrane; Single-pass type II membrane protein. Cell membrane; Lipid-anchor. Secreted. Note=Also exists as a soluble excreted form, sCD23

### Tissue Location

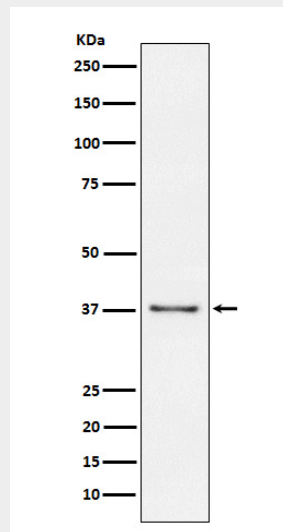
Detected in urine (at protein level).

## Anti-CD23 FCER2 Monoclonal Antibody - Protocols

Provided below are standard protocols that you may find useful for product applications.

- [Western Blot](#)
- [Blocking Peptides](#)
- [Dot Blot](#)
- [Immunohistochemistry](#)
- [Immunofluorescence](#)
- [Immunoprecipitation](#)
- [Flow Cytometry](#)
- [Cell Culture](#)

## Anti-CD23 FCER2 Monoclonal Antibody - Images



Western blot analysis of CD23 expression in Raji cell lysate.