

**Anti-ZEB1 Monoclonal Antibody**  
Catalog # ABO14576**Specification****Anti-ZEB1 Monoclonal Antibody - Product Information**

Application	WB, IHC, IF, ICC, FC
Primary Accession	<a href="#">P37275</a>
Host	Rabbit
Isotype	Rabbit IgG
Reactivity	Human
Clonality	Monoclonal
Format	Liquid

**Description**

Anti-ZEB1 Monoclonal Antibody . Tested in WB, IHC, ICC/IF, Flow Cytometry applications. This antibody reacts with Human.

**Anti-ZEB1 Monoclonal Antibody - Additional Information**

**Gene ID** 6935

**Other Names**

Zinc finger E-box-binding homeobox 1 {ECO:0000312|HGNC:HGNC:11642}, NIL-2-A zinc finger protein {ECO:0000303|Ref.26}, Negative regulator of IL2, Transcription factor 8, TCF-8, ZEB1 ([http://www.genenames.org/cgi-bin/gene\\_symbol\\_report?hgnc\\_id=11642](http://www.genenames.org/cgi-bin/gene_symbol_report?hgnc_id=11642))

**Application Details**

WB 1:500-1:1000<br>IHC 1:50-1:200<br>ICC/IF 1:50-1:200<br>FC 1:50

**Contents**

Rabbit IgG in phosphate buffered saline, pH 7.4, 150mM NaCl, 0.02% sodium azide and 50% glycerol, 0.4-0.5mg/ml BSA.

**Immunogen**

A synthesized peptide derived from human AREB6

**Purification**

Affinity-chromatography

**Storage**

**Store at -20°C for one year. For short term storage and frequent use, store at 4°C for up to one month. Avoid repeated freeze-thaw cycles.**

**Anti-ZEB1 Monoclonal Antibody - Protein Information**

**Name** ZEB1 ([HGNC:11642](#))

### Function

Acts as a transcriptional repressor. Inhibits interleukin-2 (IL-2) gene expression. Enhances or represses the promoter activity of the ATP1A1 gene depending on the quantity of cDNA and on the cell type. Represses E-cadherin promoter and induces an epithelial-mesenchymal transition (EMT) by recruiting SMARCA4/BRG1. Represses BCL6 transcription in the presence of the corepressor CTBP1. Positively regulates neuronal differentiation. Represses RCOR1 transcription activation during neurogenesis. Represses transcription by binding to the E box (5'-CANNTG-3'). In the absence of TGFB1, acts as a repressor of COL1A2 transcription via binding to the E-box in the upstream enhancer region (By similarity).

### Cellular Location

Nucleus

### Tissue Location

Colocalizes with SMARCA4/BRG1 in E-cadherin- negative cells from established lines, and stroma of normal colon as well as in de-differentiated epithelial cells at the invasion front of colorectal carcinomas (at protein level). Expressed in heart and skeletal muscle, but not in liver, spleen, or pancreas

### Anti-ZEB1 Monoclonal Antibody - Protocols

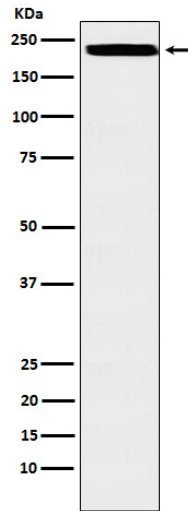
Provided below are standard protocols that you may find useful for product applications.

- [Western Blot](#)
- [Blocking Peptides](#)
- [Dot Blot](#)
- [Immunohistochemistry](#)
- [Immunofluorescence](#)
- [Immunoprecipitation](#)
- [Flow Cytometry](#)
- [Cell Culture](#)

### Anti-ZEB1 Monoclonal Antibody - Images



Immunofluorescent analysis using the Antibody at 1:50 dilution.



Western blot analysis of AREB6 expression in HEK293 cell lysate.