

Anti-alpha 1 Antichymotrypsin SERPINA3 Monoclonal Antibody
Catalog # ABO14541

Specification

Anti-alpha 1 Antichymotrypsin SERPINA3 Monoclonal Antibody - Product Information

Application	WB, IHC, IF, ICC, IP
Primary Accession	P01011
Host	Rabbit
Isotype	Rabbit IgG
Reactivity	Human
Clonality	Monoclonal
Format	Liquid

Description

Anti-alpha 1 Antichymotrypsin SERPINA3 Monoclonal Antibody . Tested in WB, IHC, ICC/IF, IP applications. This antibody reacts with Human.

Anti-alpha 1 Antichymotrypsin SERPINA3 Monoclonal Antibody - Additional Information

Gene ID 12

Other Names

Alpha-1-antichymotrypsin, ACT, Cell growth-inhibiting gene 24/25 protein, Serpin A3, Alpha-1-antichymotrypsin His-Pro-less, SERPINA3, AACT

Application Details

WB 1:500-1:1000
IHC 1:100-1:500
ICC/IF 1:50-1:200
IP 1:30

Contents

Rabbit IgG in phosphate buffered saline, pH 7.4, 150mM NaCl, 0.02% sodium azide and 50% glycerol, 0.4-0.5mg/ml BSA.

Immunogen

A synthesized peptide derived from human alpha 1 Antichymotrypsin Although its physiological function is unclear, it can inhibit neutrophil cathepsin G and mast cell chymase, both of which can convert angiotensin-1 to the active angiotensin-2.

Purification

Affinity-chromatography

Storage

Store at -20°C for one year. For short term storage and frequent use, store at 4°C for up to one month. Avoid repeated freeze-thaw cycles.

Anti-alpha 1 Antichymotrypsin SERPINA3 Monoclonal Antibody - Protein Information

Name SERPINA3

Synonyms AACT

Function

Although its physiological function is unclear, it can inhibit neutrophil cathepsin G and mast cell chymase, both of which can convert angiotensin-1 to the active angiotensin-2.

Cellular Location

Secreted.

Tissue Location

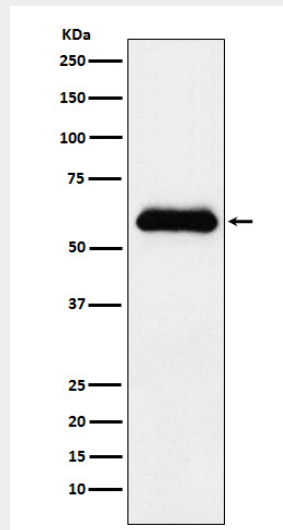
Plasma. Synthesized in the liver. Like the related alpha-1-antitrypsin, its concentration increases in the acute phase of inflammation or infection. Found in the amyloid plaques from the hippocampus of Alzheimer disease brains.

Anti-alpha 1 Antichymotrypsin SERPINA3 Monoclonal Antibody - Protocols

Provided below are standard protocols that you may find useful for product applications.

- [Western Blot](#)
- [Blocking Peptides](#)
- [Dot Blot](#)
- [Immunohistochemistry](#)
- [Immunofluorescence](#)
- [Immunoprecipitation](#)
- [Flow Cytometry](#)
- [Cell Culture](#)

Anti-alpha 1 Antichymotrypsin SERPINA3 Monoclonal Antibody - Images



Western blot analysis of alpha 1 Antichymotrypsin expression in human plasma lysate.