

Anti-TAX1BP3 Monoclonal Antibody
Catalog # ABO14530**Specification****Anti-TAX1BP3 Monoclonal Antibody - Product Information**

Application	WB, IHC, FC
Primary Accession	O14907
Host	Rabbit
Isotype	Rabbit IgG
Reactivity	Rat, Human, Mouse
Clonality	Monoclonal
Format	Liquid

Description

Anti-TAX1BP3 Monoclonal Antibody . Tested in WB, IHC, Flow Cytometry applications. This antibody reacts with Human, Mouse, Rat.

Anti-TAX1BP3 Monoclonal Antibody - Additional Information

Gene ID 30851

Other Names

Tax1-binding protein 3, Glutaminase-interacting protein 3, Tax interaction protein 1, TIP-1, Tax-interacting protein 1, TAX1BP3 ([HGNC:30684](http://www.genenames.org/cgi-bin/gene_symbol_report?hgnc_id=30684))

Application Details

WB 1:500-1:2000
IHC 1:50-1:200
FC 1:70

Contents

Rabbit IgG in phosphate buffered saline, pH 7.4, 150mM NaCl, 0.02% sodium azide and 50% glycerol, 0.4-0.5mg/ml BSA.

Immunogen

A synthesized peptide derived from human TAX1BP3 May play a role in the Rho signaling pathway. May act as an inhibitor of the Wnt signaling pathway. May play a role in activation of CDC42 by the viral protein HPV16 E6.

Purification

Affinity-chromatography

Storage

Store at -20°C for one year. For short term storage and frequent use, store at 4°C for up to one month. Avoid repeated freeze-thaw cycles.

Anti-TAX1BP3 Monoclonal Antibody - Protein Information

Name TAX1BP3 ([HGNC:30684](#))

Function

May regulate a number of protein-protein interactions by competing for PDZ domain binding sites. Binds CTNNB1 and may thereby act as an inhibitor of the Wnt signaling pathway. Competes with LIN7A for KCNJ4 binding, and thereby promotes KCNJ4 internalization. May play a role in the Rho signaling pathway. May play a role in activation of CDC42 by the viral protein HPV16 E6.

Cellular Location

Cytoplasm. Nucleus. Cell membrane; Peripheral membrane protein; Cytoplasmic side.
Note=Recruited to the cell membrane by interaction with membrane proteins

Tissue Location

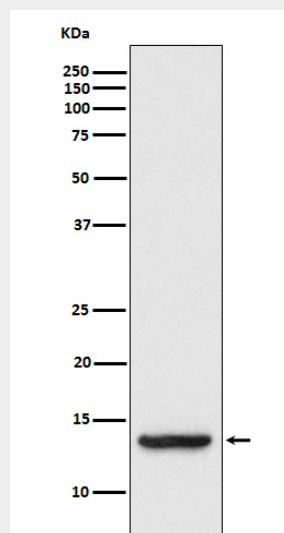
Ubiquitous. Detected in brain, heart, kidney, lung, small intestine and skeletal muscle. Detected in various cell lines including HeLa. Weakly expressed in peripheral blood leukocytes

Anti-TAX1BP3 Monoclonal Antibody - Protocols

Provided below are standard protocols that you may find useful for product applications.

- [Western Blot](#)
- [Blocking Peptides](#)
- [Dot Blot](#)
- [Immunohistochemistry](#)
- [Immunofluorescence](#)
- [Immunoprecipitation](#)
- [Flow Cytometry](#)
- [Cell Culture](#)

Anti-TAX1BP3 Monoclonal Antibody - Images



Western blot analysis of TAX1BP3 expression in HT-1080 cell lysate.