

**Anti-ETS1 Monoclonal Antibody**  
Catalog # ABO14497**Specification**

---

**Anti-ETS1 Monoclonal Antibody - Product Information**

Application	WB, FC
Primary Accession	<a href="#">P14921</a>
Host	Rabbit
Isotype	Rabbit IgG
Reactivity	Human, Mouse
Clonality	Monoclonal
Format	Liquid

**Description**

Anti-ETS1 Monoclonal Antibody . Tested in WB, Flow Cytometry applications. This antibody reacts with Human, Mouse.

**Anti-ETS1 Monoclonal Antibody - Additional Information**

**Gene ID** 2113

**Other Names**

Protein C-ets-1, p54, ETS1, EWSR2

**Application Details**

WB 1:500-1:2000<br>FC 1:80

**Contents**

Rabbit IgG in phosphate buffered saline, pH 7.4, 150mM NaCl, 0.02% sodium azide and 50% glycerol, 0.4-0.5mg/ml BSA.

**Immunogen**

A synthesized peptide derived from human ETS1 Transcription factor.

**Purification**

Affinity-chromatography

**Storage**

**Store at -20°C for one year. For short term storage and frequent use, store at 4°C for up to one month. Avoid repeated freeze-thaw cycles.**

**Anti-ETS1 Monoclonal Antibody - Protein Information**

**Name** ETS1

**Synonyms** EWSR2

**Function**

Transcription factor (PubMed:[10698492](http://www.uniprot.org/citations/10698492), PubMed:[11909962](http://www.uniprot.org/citations/11909962)). Directly controls the expression of cytokine and chemokine genes in a wide variety of different cellular contexts (PubMed:[20378371](http://www.uniprot.org/citations/20378371)). May control the differentiation, survival and proliferation of lymphoid cells (PubMed:[20378371](http://www.uniprot.org/citations/20378371)). May also regulate angiogenesis through regulation of expression of genes controlling endothelial cell migration and invasion (PubMed:[15247905](http://www.uniprot.org/citations/15247905), PubMed:[15592518](http://www.uniprot.org/citations/15592518)).

#### Cellular Location

Nucleus. Cytoplasm Note=Delocalizes from nucleus to cytoplasm when coexpressed with isoform Ets-1 p27.

#### Tissue Location

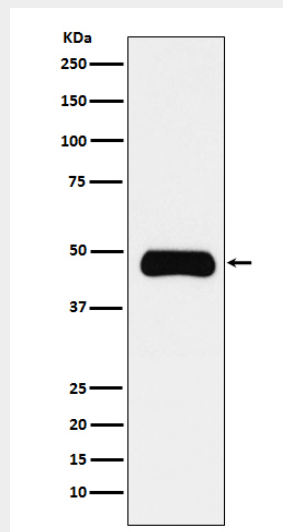
Highly expressed within lymphoid cells. Isoforms c- ETS-1A and Ets-1 p27 are both detected in all fetal tissues tested, but vary with tissue type in adult tissues. None is detected in brain or kidney.

### Anti-ETS1 Monoclonal Antibody - Protocols

Provided below are standard protocols that you may find useful for product applications.

- [Western Blot](#)
- [Blocking Peptides](#)
- [Dot Blot](#)
- [Immunohistochemistry](#)
- [Immunofluorescence](#)
- [Immunoprecipitation](#)
- [Flow Cytometry](#)
- [Cell Culture](#)

### Anti-ETS1 Monoclonal Antibody - Images



Western blot analysis of Insulin Receptor R expression in Daudi cell lysate.