

**Anti-Glycophorin A (CD235a) GYPA Monoclonal Antibody**  
Catalog # ABO14494**Specification****Anti-Glycophorin A (CD235a) GYPA Monoclonal Antibody - Product Information**

Application	WB, IHC, FC
Primary Accession	<a href="#">P02724</a>
Host	Rabbit
Isotype	Rabbit IgG
Reactivity	Human
Clonality	Monoclonal
Format	Liquid

**Description**

Anti-Glycophorin A (CD235a) GYPA Monoclonal Antibody . Tested in WB, IHC, Flow Cytometry applications. This antibody reacts with Human.

**Anti-Glycophorin A (CD235a) GYPA Monoclonal Antibody - Additional Information**

**Gene ID** 2993

**Other Names**

Glycophorin-A, MN sialoglycoprotein, PAS-2, Sialoglycoprotein alpha, CD235a, GYPA ([HGNC:4702](http://www.genenames.org/cgi-bin/gene_symbol_report?hgnc_id=4702)), GPA

**Application Details**

WB 1:500-1:1000<br>IHC 1:100-1:500<br>FC 1:50

**Contents**

Rabbit IgG in phosphate buffered saline, pH 7.4, 150mM NaCl, 0.02% sodium azide and 50% glycerol, 0.4-0.5mg/ml BSA.

**Immunogen**

A synthesized peptide derived from human Glycophorin A (CD235a).

**Purification**

Affinity-chromatography

**Storage**

**Store at -20°C for one year. For short term storage and frequent use, store at 4°C for up to one month. Avoid repeated freeze-thaw cycles.**

**Anti-Glycophorin A (CD235a) GYPA Monoclonal Antibody - Protein Information**

**Name** GYPA ([HGNC:4702](#))

**Function**

Component of the ankyrin-1 complex, a multiprotein complex involved in the stability and shape of the erythrocyte membrane (PubMed: [35835865](http://www.uniprot.org/citations/35835865)). Glycophorin A is the major intrinsic membrane protein of the erythrocyte. The N-terminal glycosylated segment, which lies outside the erythrocyte membrane, has MN blood group receptors. Appears to be important for the function of SLC4A1 and is required for high activity of SLC4A1. May be involved in translocation of SLC4A1 to the plasma membrane.

#### Cellular Location

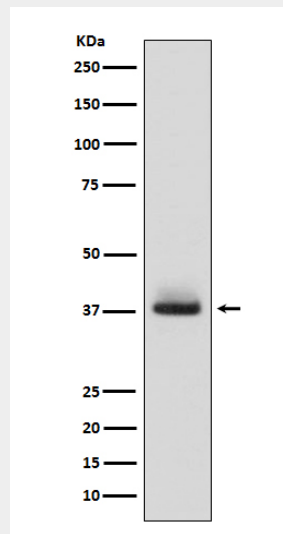
Cell membrane; Single-pass type I membrane protein Note=Appears to be colocalized with SLC4A1

### Anti-Glycophorin A (CD235a) GYPA Monoclonal Antibody - Protocols

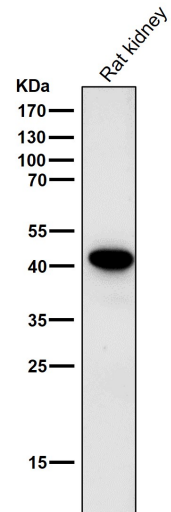
Provided below are standard protocols that you may find useful for product applications.

- [Western Blot](#)
- [Blocking Peptides](#)
- [Dot Blot](#)
- [Immunohistochemistry](#)
- [Immunofluorescence](#)
- [Immunoprecipitation](#)
- [Flow Cytometry](#)
- [Cell Culture](#)

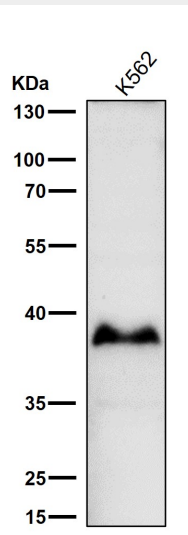
### Anti-Glycophorin A (CD235a) GYPA Monoclonal Antibody - Images



Western blot analysis of Glycophorin A (CD235a) expression in human fetal liver lysate.



All lanes use the Antibody at 1:1K dilution for 1 hour at room temperature.



All lanes use the Antibody at 1:1K dilution for 1 hour at room temperature.