

Anti-Calretinin Monoclonal Antibody
Catalog # ABO14491

Specification

Anti-Calretinin Monoclonal Antibody - Product Information

| | |
|-------------------|------------------------|
| Application | WB, IHC, IF, ICC, FC |
| Primary Accession | P22676 |
| Host | Rabbit |
| Isotype | Rabbit IgG |
| Reactivity | Rat, Human, Mouse |
| Clonality | Monoclonal |
| Format | Liquid |

Description

Anti-Calretinin Monoclonal Antibody . Tested in WB, IHC, ICC/IF, Flow Cytometry applications. This antibody reacts with Human, Mouse, Rat.

Anti-Calretinin Monoclonal Antibody - Additional Information

Gene ID 794

Other Names

Calretinin, CR, 29 kDa calbindin, CALB2, CAB29

Application Details

WB 1:500-1:1000
IHC 1:50-1:200
ICC/IF 1:50-1:200
FC 1:50

Contents

Rabbit IgG in phosphate buffered saline, pH 7.4, 150mM NaCl, 0.02% sodium azide and 50% glycerol, 0.4-0.5mg/ml BSA.

Immunogen

A synthesized peptide derived from human Calretinin.

Purification

Affinity-chromatography

Storage

Store at -20°C for one year. For short term storage and frequent use, store at 4°C for up to one month. Avoid repeated freeze-thaw cycles.

Anti-Calretinin Monoclonal Antibody - Protein Information

Name CALB2

Synonyms CAB29

Function

Calretinin is a calcium-binding protein which is abundant in auditory neurons.

Tissue Location

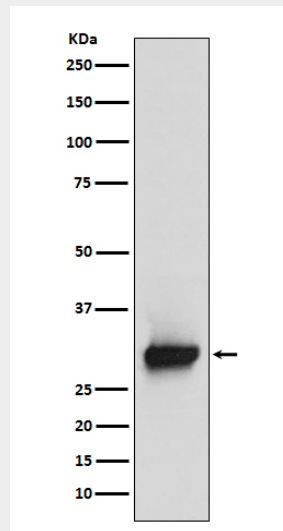
Brain.

Anti-Calretinin Monoclonal Antibody - Protocols

Provided below are standard protocols that you may find useful for product applications.

- [Western Blot](#)
- [Blocking Peptides](#)
- [Dot Blot](#)
- [Immunohistochemistry](#)
- [Immunofluorescence](#)
- [Immunoprecipitation](#)
- [Flow Cytometry](#)
- [Cell Culture](#)

Anti-Calretinin Monoclonal Antibody - Images



Western blot analysis of Calretinin expression in SH-SY5Y cell lysate.