

Anti-GCSF Receptor (CD114) Monoclonal Antibody
Catalog # ABO14450

Specification

Anti-GCSF Receptor (CD114) Monoclonal Antibody - Product Information

Application	WB, FC
Primary Accession	Q99062
Host	Rabbit
Isotype	Rabbit IgG
Reactivity	Human
Clonality	Monoclonal
Format	Liquid

Description

Anti-GCSF Receptor (CD114) Monoclonal Antibody . Tested in WB, Flow Cytometry applications. This antibody reacts with Human.

Anti-GCSF Receptor (CD114) Monoclonal Antibody - Additional Information

Gene ID 1441

Other Names

Granulocyte colony-stimulating factor receptor, G-CSF receptor, G-CSF-R, CD114, CSF3R, GCSFR

Application Details

WB 1:500-1:2000
FC 1:200

Contents

Rabbit IgG in phosphate buffered saline, pH 7.4, 150mM NaCl, 0.02% sodium azide and 50% glycerol, 0.4-0.5mg/ml BSA.

Immunogen

A synthesized peptide derived from human GCSF Receptor (CD114) Receptor for granulocyte colony-stimulating factor (CSF3), essential for granulocytic maturation. Plays a crucial role in the proliferation, differentiation and survival of cells along the neutrophilic lineage. In addition it may function in some adhesion or recognition events at the cell surface.

Purification

Affinity-chromatography

Storage

Store at -20°C for one year. For short term storage and frequent use, store at 4°C for up to one month. Avoid repeated freeze-thaw cycles.

Anti-GCSF Receptor (CD114) Monoclonal Antibody - Protein Information

Name CSF3R

Synonyms GCSFR

Function

Receptor for granulocyte colony-stimulating factor (CSF3), essential for granulocytic maturation. Plays a crucial role in the proliferation, differentiation and survival of cells along the neutrophilic lineage. In addition it may function in some adhesion or recognition events at the cell surface.

Cellular Location

[Isoform 2]: Secreted.

Tissue Location

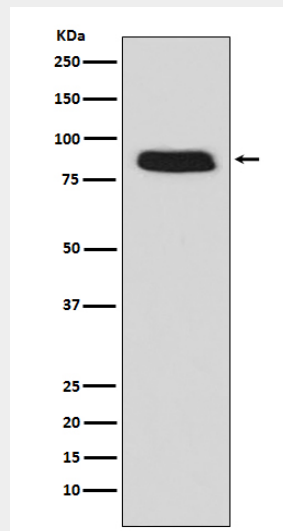
One or several isoforms have been found in myelogenous leukemia cell line KG-1, leukemia U-937 cell line, in bone marrow cells, placenta, and peripheral blood granulocytes. Isoform GCSFR-2 is found only in leukemia U-937 cells. Isoform GCSFR-3 is highly expressed in placenta

Anti-GCSF Receptor (CD114) Monoclonal Antibody - Protocols

Provided below are standard protocols that you may find useful for product applications.

- [Western Blot](#)
- [Blocking Peptides](#)
- [Dot Blot](#)
- [Immunohistochemistry](#)
- [Immunofluorescence](#)
- [Immunoprecipitation](#)
- [Flow Cytometry](#)
- [Cell Culture](#)

Anti-GCSF Receptor (CD114) Monoclonal Antibody - Images



Western blot analysis of GCSF Receptor (CD114) expression in Caco-2 cell lysate.