

Anti-TCTP Rabbit Monoclonal Antibody
Catalog # ABO14432**Specification****Anti-TCTP Rabbit Monoclonal Antibody - Product Information**

Application	WB, IHC, IF, ICC, IP, FC
Primary Accession	P13693
Host	Rabbit
Isotype	Rabbit IgG
Reactivity	Rat, Human, Mouse
Clonality	Monoclonal
Format	Liquid

Description

Anti-TCTP Rabbit Monoclonal Antibody . Tested in WB, IHC, ICC/IF, IP, Flow Cytometry applications. This antibody reacts with Human, Mouse, Rat.

Anti-TCTP Rabbit Monoclonal Antibody - Additional Information

Gene ID 7178

Other Names

Translationally-controlled tumor protein, TCTP, Fortilin, Histamine-releasing factor, HRF, p23, TPT1

Application Details

WB 1:1000-1:5000
IHC 1:50-1:200
ICC/IF 1:50-1:200
IP 1:50
FC 1:100

Contents

Rabbit IgG in phosphate buffered saline, pH 7.4, 150mM NaCl, 0.02% sodium azide and 50% glycerol, 0.4-0.5mg/ml BSA.

Immunogen

A synthesized peptide derived from human TCTP

Purification

Affinity-chromatography

Storage

Store at -20°C for one year. For short term storage and frequent use, store at 4°C for up to one month. Avoid repeated freeze-thaw cycles.

Anti-TCTP Rabbit Monoclonal Antibody - Protein Information

Name TPT1

Function

Involved in calcium binding and microtubule stabilization (PubMed:12167714, PubMed:12167714)

href="http://www.uniprot.org/citations/15162379" target="_blank">15162379, PubMed:15958728). Acts as a negative regulator of TSC22D1-mediated apoptosis, via interaction with and destabilization of TSC22D1 protein (PubMed:18325344).

Cellular Location

Cytoplasm.

Tissue Location

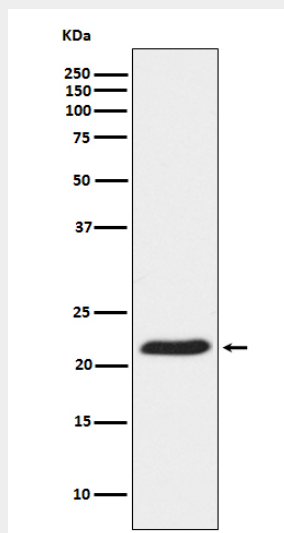
Found in several healthy and tumoral cells including erythrocytes, hepatocytes, macrophages, platelets, keratinocytes, erythroleukemia cells, gliomas, melanomas, hepatoblastomas, and lymphomas. It cannot be detected in kidney and renal cell carcinoma (RCC). Expressed in placenta and prostate

Anti-TCTP Rabbit Monoclonal Antibody - Protocols

Provided below are standard protocols that you may find useful for product applications.

- [Western Blot](#)
- [Blocking Peptides](#)
- [Dot Blot](#)
- [Immunohistochemistry](#)
- [Immunofluorescence](#)
- [Immunoprecipitation](#)
- [Flow Cytometry](#)
- [Cell Culture](#)

Anti-TCTP Rabbit Monoclonal Antibody - Images



Western blot analysis of TCTP Receptor expression in HeLa cell lysate.