

Anti-KLKB1 Monoclonal Antibody
Catalog # ABO14430**Specification**

Anti-KLKB1 Monoclonal Antibody - Product Information

Application	WB, IHC, IP
Primary Accession	P03952
Host	Rabbit
Isotype	Rabbit IgG
Reactivity	Rat, Human
Clonality	Monoclonal
Format	Liquid

Description

Anti-KLKB1 Monoclonal Antibody . Tested in WB, IHC, IP applications. This antibody reacts with Human, Rat.

Anti-KLKB1 Monoclonal Antibody - Additional Information

Gene ID 3818

Other Names

Plasma kallikrein, 3.4.21.34, Fletcher factor, Kininogenin, Plasma prekallikrein, PKK, Plasma kallikrein heavy chain, Plasma kallikrein light chain, KLKB1, KLK3

Application Details

WB 1:500-1:2000
IHC 1:50-1:200
IP 1:50

Contents

Rabbit IgG in phosphate buffered saline, pH 7.4, 150mM NaCl, 0.02% sodium azide and 50% glycerol, 0.4-0.5mg/ml BSA.

Immunogen

A synthesized peptide derived from human KLKB1

Purification

Affinity-chromatography

Storage

Store at -20°C for one year. For short term storage and frequent use, store at 4°C for up to one month. Avoid repeated freeze-thaw cycles.

Anti-KLKB1 Monoclonal Antibody - Protein Information

Name KLKB1

Synonyms KLK3

Function

Participates in the surface-dependent activation of blood coagulation. Activates, in a reciprocal reaction, coagulation factor XII/F12 after binding to negatively charged surfaces. Releases bradykinin from HMW kininogen and may also play a role in the renin-angiotensin system by converting prorenin into renin.

Cellular Location

Secreted.

Tissue Location

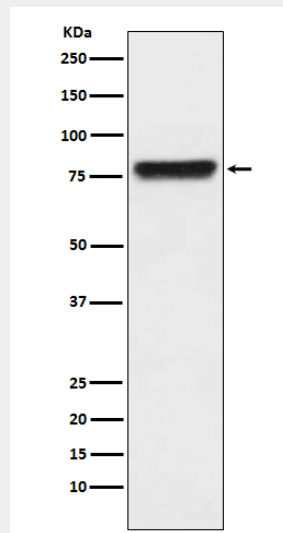
Found in plasma (at protein level).

Anti-KLKB1 Monoclonal Antibody - Protocols

Provided below are standard protocols that you may find useful for product applications.

- [Western Blot](#)
- [Blocking Peptides](#)
- [Dot Blot](#)
- [Immunohistochemistry](#)
- [Immunofluorescence](#)
- [Immunoprecipitation](#)
- [Flow Cytometry](#)
- [Cell Culture](#)

Anti-KLKB1 Monoclonal Antibody - Images



Western blot analysis of KLKB1 expression in human plasma lysate.