

Anti-ORM1 Monoclonal Antibody
Catalog # ABO14421

Specification

Anti-ORM1 Monoclonal Antibody - Product Information

Application	WB, IHC
Primary Accession	P02763
Host	Rabbit
Isotype	Rabbit IgG
Reactivity	Human
Clonality	Monoclonal
Format	Liquid

Description

Anti-ORM1 Monoclonal Antibody . Tested in WB, IHC applications. This antibody reacts with Human.

Anti-ORM1 Monoclonal Antibody - Additional Information

Gene ID 5004

Other Names

Alpha-1-acid glycoprotein 1, AGP 1, Orosomucoid-1, OMD 1, ORM1, AGP1

Application Details

WB 1:500-1:2000
IHC 1:50-1:200

Contents

Rabbit IgG in phosphate buffered saline, pH 7.4, 150mM NaCl, 0.02% sodium azide and 50% glycerol, 0.4-0.5mg/ml BSA.

Immunogen

A synthesized peptide derived from human ORM1 Appears to function in modulating the activity of the immune system during the acute-phase reaction.

Purification

Affinity-chromatography

Storage

Store at -20°C for one year. For short term storage and frequent use, store at 4°C for up to one month. Avoid repeated freeze-thaw cycles.

Anti-ORM1 Monoclonal Antibody - Protein Information

Name ORM1

Synonyms AGP1

Function

Functions as a transport protein in the blood stream. Binds various ligands in the interior of its beta-barrel domain. Also binds synthetic drugs and influences their distribution and availability in the body. Appears to function in modulating the activity of the immune system during the acute-phase reaction.

Cellular Location

Secreted.

Tissue Location

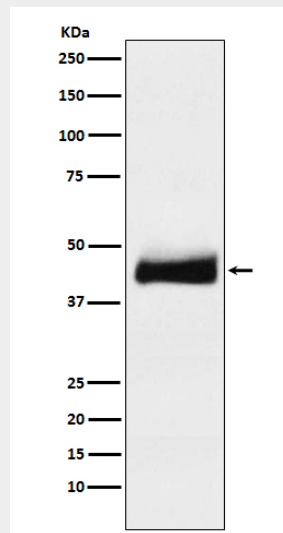
Expressed by the liver and secreted in plasma.

Anti-ORM1 Monoclonal Antibody - Protocols

Provided below are standard protocols that you may find useful for product applications.

- [Western Blot](#)
- [Blocking Peptides](#)
- [Dot Blot](#)
- [Immunohistochemistry](#)
- [Immunofluorescence](#)
- [Immunoprecipitation](#)
- [Flow Cytometry](#)
- [Cell Culture](#)

Anti-ORM1 Monoclonal Antibody - Images



Western blot analysis of ORM1 expression in human testis lysate.