

**Anti-SERPINC1 Monoclonal Antibody**  
Catalog # ABO14419

**Specification**

---

**Anti-SERPINC1 Monoclonal Antibody - Product Information**

Application	WB, IF, ICC
Primary Accession	<a href="#">P01008</a>
Host	Rabbit
Isotype	Rabbit IgG
Reactivity	Human
Clonality	Monoclonal
Format	Liquid

**Description**

Anti-SERPINC1 Monoclonal Antibody . Tested in WB, ICC/IF applications. This antibody reacts with Human.

**Anti-SERPINC1 Monoclonal Antibody - Additional Information**

**Gene ID** 462

**Other Names**

Antithrombin-III, ATIII, Serpin C1, SERPINC1, AT3

**Application Details**

WB 1:500-1:2000<br>ICC/IF 1:50-1:200

**Contents**

Rabbit IgG in phosphate buffered saline, pH 7.4, 150mM NaCl, 0.02% sodium azide and 50% glycerol, 0.4-0.5mg/ml BSA.

**Immunogen**

A synthesized peptide derived from human SERPINC1 Most important serine protease inhibitor in plasma that regulates the blood coagulation cascade. AT-III inhibits thrombin as well as factors IXa, Xa and XIa. Its inhibitory activity is greatly enhanced in the presence of heparin.

**Purification**

Affinity-chromatography

**Storage**

**Store at -20°C for one year. For short term storage and frequent use, store at 4°C for up to one month. Avoid repeated freeze-thaw cycles.**

**Anti-SERPINC1 Monoclonal Antibody - Protein Information**

**Name** SERPINC1

**Synonyms** AT3

**Function**

Most important serine protease inhibitor in plasma that regulates the blood coagulation cascade (PubMed:<a href="http://www.uniprot.org/citations/15140129" target="\_blank">15140129</a>, PubMed:<a href="http://www.uniprot.org/citations/15853774" target="\_blank">15853774</a>). AT-III inhibits thrombin, matriptase-3/TMPRSS7, as well as factors IXa, Xa and XIa (PubMed:<a href="http://www.uniprot.org/citations/15140129" target="\_blank">15140129</a>). Its inhibitory activity is greatly enhanced in the presence of heparin.

**Cellular Location**

Secreted, extracellular space.

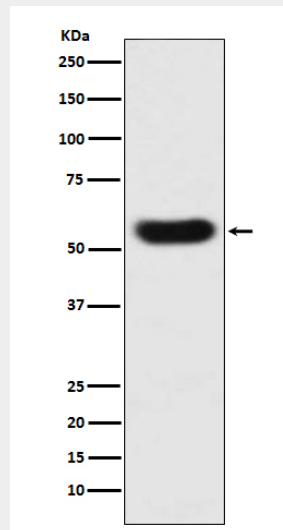
**Tissue Location**

Found in plasma.

**Anti-SERPINC1 Monoclonal Antibody - Protocols**

Provided below are standard protocols that you may find useful for product applications.

- [Western Blot](#)
- [Blocking Peptides](#)
- [Dot Blot](#)
- [Immunohistochemistry](#)
- [Immunofluorescence](#)
- [Immunoprecipitation](#)
- [Flow Cytometry](#)
- [Cell Culture](#)

**Anti-SERPINC1 Monoclonal Antibody - Images**

Western blot analysis of SERPINC1 expression in human plasma lysate.