

Anti-CEACAM6 Rabbit Monoclonal Antibody Catalog # ABO14411

Specification

Anti-CEACAM6 Rabbit Monoclonal Antibody - Product Information

Application	WB, IHC, IF, ICC, IP
Primary Accession	P40199
Host	Rabbit
Isotype	Rabbit IgG
Reactivity	Rat, Human, Mouse
Clonality	Monoclonal
Format	Liquid

Description

Anti-CEACAM6 Rabbit Monoclonal Antibody . Tested in WB, IHC, ICC/IF, IP applications. This antibody reacts with Human, Mouse, Rat.

Anti-CEACAM6 Rabbit Monoclonal Antibody - Additional Information

Gene ID 4680

Other Names

Carcinoembryonic antigen-related cell adhesion molecule 6, Non-specific crossreacting antigen, Normal cross-reacting antigen, CD66c, CEACAM6, NCA

Application Details

WB 1:1000-1:5000
IHC 1:50-1:200
ICC/IF 1:50-1:200
IP 1:50

Contents

Rabbit IgG in phosphate buffered saline, pH 7.4, 150mM NaCl, 0.02% sodium azide and 50% glycerol, 0.4-0.5mg/ml BSA.

Immunogen

A synthesized peptide derived from human CEACAM6

Purification

Affinity-chromatography

Storage

Store at -20°C for one year. For short term storage and frequent use, store at 4°C for up to one month. Avoid repeated freeze-thaw cycles.

Anti-CEACAM6 Rabbit Monoclonal Antibody - Protein Information

Name CEACAM6 ([HGNC:1818](#))

Function

Cell surface glycoprotein that plays a role in cell adhesion and tumor progression (PubMed:10910050, PubMed:11590190, PubMed:1378450, PubMed:16204051, PubMed:2022629, PubMed:2803308, PubMed:8776764). Intercellular adhesion occurs in a calcium- and fibronectin-independent manner (PubMed:16204051, PubMed:2022629). Mediates homophilic and heterophilic cell adhesion with other carcinoembryonic antigen-related cell adhesion molecules, such as CEACAM5 and CEACAM8 (PubMed:11590190, PubMed:16204051, PubMed:2022629, PubMed:2803308, PubMed:8776764). Heterophilic interaction with CEACAM8 occurs in activated neutrophils (PubMed:8776764). Plays a role in neutrophil adhesion to cytokine-activated endothelial cells (PubMed:1378450). Plays a role in cell migration and cell adhesion to endothelial cells (PubMed:16204051).

Cellular Location

Cell membrane; Lipid-anchor, GPI-anchor. Apical cell membrane. Cell surface. Note=Localized to the apical glycocalyx surface.

Tissue Location

Expressed in neutrophils (PubMed:1378450). Expressed in columnar epithelial and goblet cells of the colon (PubMed:10436421). Expressed in numerous tumor cell lines (at protein level) (PubMed:16204051).

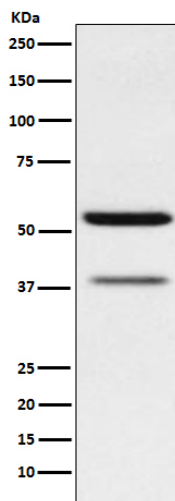
Anti-CEACAM6 Rabbit Monoclonal Antibody - Protocols

Provided below are standard protocols that you may find useful for product applications.

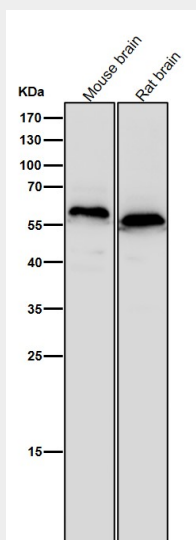
- [Western Blot](#)
- [Blocking Peptides](#)
- [Dot Blot](#)
- [Immunohistochemistry](#)
- [Immunofluorescence](#)
- [Immunoprecipitation](#)
- [Flow Cytometry](#)
- [Cell Culture](#)

Anti-CEACAM6 Rabbit Monoclonal Antibody - Images





Western blot analysis of CEACAM6 expression in MCF7 cell lysate.



All lanes use the Antibody at 1:2W dilution for 1 hour at room temperature.