

Anti-PDCD4 Rabbit Monoclonal Antibody
Catalog # ABO14403**Specification****Anti-PDCD4 Rabbit Monoclonal Antibody - Product Information**

Application	WB, IHC, IF, ICC, FC
Primary Accession	Q53EL6
Host	Rabbit
Isotype	Rabbit IgG
Reactivity	Human, Mouse
Clonality	Monoclonal
Format	Liquid

Description

Anti-PDCD4 Rabbit Monoclonal Antibody . Tested in WB, IHC, ICC/IF, Flow Cytometry applications. This antibody reacts with Human, Mouse.

Anti-PDCD4 Rabbit Monoclonal Antibody - Additional Information

Gene ID 27250

Other Names

Programmed cell death protein 4, Neoplastic transformation inhibitor protein, Nuclear antigen H731-like, Protein 197/15a, PDCD4, H731

Application Details

WB 1:500-1:2000
IHC 1:100-1:500
ICC/IF 1:50-1:200
FC 1:50

Contents

Rabbit IgG in phosphate buffered saline, pH 7.4, 150mM NaCl, 0.02% sodium azide and 50% glycerol, 0.4-0.5mg/ml BSA.

Immunogen

A synthesized peptide derived from human PDCD4

Purification

Affinity-chromatography

Storage

Store at -20°C for one year. For short term storage and frequent use, store at 4°C for up to one month. Avoid repeated freeze-thaw cycles.

Anti-PDCD4 Rabbit Monoclonal Antibody - Protein Information

Name PDCD4

Synonyms H731

Function

Inhibits translation initiation and cap-dependent translation. May exert its function by hindering the interaction between EIF4A1 and EIF4G. Inhibits the helicase activity of EIF4A. Modulates the activation of JUN kinase. Down-regulates the expression of MAP4K1, thus inhibiting events important in driving invasion, namely, MAPK85 activation and consequent JUN-dependent transcription. May play a role in apoptosis. Tumor suppressor. Inhibits tumor promoter-induced neoplastic transformation. Binds RNA (By similarity).

Cellular Location

Nucleus {ECO:0000250|UniProtKB:Q61823}. Cytoplasm {ECO:0000250|UniProtKB:Q61823}. Note=Shuttles between the nucleus and cytoplasm (By similarity). Predominantly nuclear under normal growth conditions, and when phosphorylated at Ser-457 (PubMed:16357133)

Tissue Location

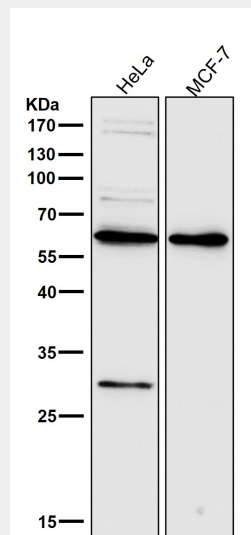
Up-regulated in proliferative cells. Highly expressed in epithelial cells of the mammary gland. Reduced expression in lung cancer and colon carcinoma.

Anti-PDCD4 Rabbit Monoclonal Antibody - Protocols

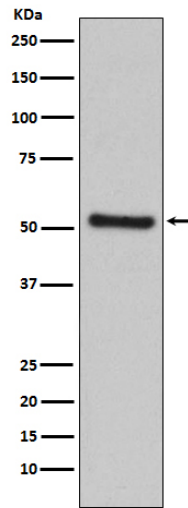
Provided below are standard protocols that you may find useful for product applications.

- [Western Blot](#)
- [Blocking Peptides](#)
- [Dot Blot](#)
- [Immunohistochemistry](#)
- [Immunofluorescence](#)
- [Immunoprecipitation](#)
- [Flow Cytometry](#)
- [Cell Culture](#)

Anti-PDCD4 Rabbit Monoclonal Antibody - Images



All lanes use the Antibody at 1:2K dilution for 1 hour at room temperature.



Western blot analysis of PDCD4 expression in HeLa cell lysate.