

Anti-Citrate synthetase CS Monoclonal Antibody Catalog # ABO14397

Specification

Anti-Citrate synthetase CS Monoclonal Antibody - Product Information

| | |
|-------------------|------------------------|
| Application | WB, IHC, IF, ICC, FC |
| Primary Accession | O75390 |
| Host | Rabbit |
| Isotype | Rabbit IgG |
| Reactivity | Rat, Human, Mouse |
| Clonality | Monoclonal |
| Format | Liquid |

Description

Anti-Citrate synthetase Rabbit Monoclonal Antibody . Tested in WB, IHC, ICC/IF, Flow Cytometry applications. This antibody reacts with Human, Mouse, Rat.

Anti-Citrate synthetase CS Monoclonal Antibody - Additional Information

Gene ID 1431

Other Names

Citrate synthase, mitochondrial, 2.3.3.1, Citrate (Si)-synthase, CS

Application Details

WB 1:500-1:2000
IHC 1:50-1:200
ICC/IF 1:50-1:200
FC 1:50

Contents

Rabbit IgG in phosphate buffered saline, pH 7.4, 150mM NaCl, 0.02% sodium azide and 50% glycerol, 0.4-0.5mg/ml BSA.

Immunogen

A synthesized peptide derived from human Citrate synthetase Carbohydrate metabolism; tricarboxylic acid cycle; isocitrate from oxaloacetate: step 1/2.

Purification

Affinity-chromatography

Storage

Store at -20°C for one year. For short term storage and frequent use, store at 4°C for up to one month. Avoid repeated freeze-thaw cycles.

Anti-Citrate synthetase CS Monoclonal Antibody - Protein Information

Name CS

Cellular Location

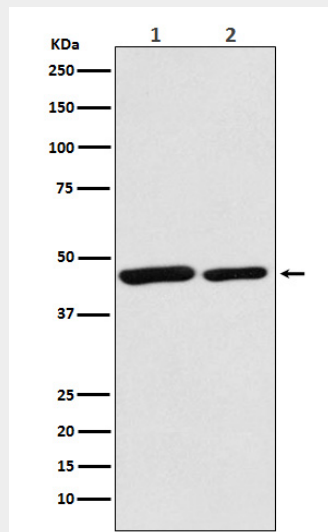
Mitochondrion matrix.

Anti-Citrate synthetase CS Monoclonal Antibody - Protocols

Provided below are standard protocols that you may find useful for product applications.

- [Western Blot](#)
- [Blocking Peptides](#)
- [Dot Blot](#)
- [Immunohistochemistry](#)
- [Immunofluorescence](#)
- [Immunoprecipitation](#)
- [Flow Cytometry](#)
- [Cell Culture](#)

Anti-Citrate synthetase CS Monoclonal Antibody - Images



Western blot analysis of Citrate synthetase expression in (1) HeLa cell lysate; (1) Mouse spleen lysate.