

Anti-p16 INK Monoclonal Antibody
Catalog # ABO14364**Specification****Anti-p16 INK Monoclonal Antibody - Product Information**

Application	WB, IHC, IF, ICC, IP, FC
Primary Accession	P42771
Host	Rabbit
Isotype	Rabbit IgG
Reactivity	Human
Clonality	Monoclonal
Format	Liquid

Description

Anti-p16 INK Monoclonal Antibody . Tested in WB, IHC, ICC/IF, IP, Flow Cytometry applications. This antibody reacts with Human.

Anti-p16 INK Monoclonal Antibody - Additional Information

Gene ID 1029

Other Names

Cyclin-dependent kinase inhibitor 2A {ECO:0000312|HGNC:HGNC:1787}, Cyclin-dependent kinase 4 inhibitor A, CDK4I, Multiple tumor suppressor 1, MTS-1, p16-INK4a, p16-INK4, p16INK4A, CDKN2A (http://www.genenames.org/cgi-bin/gene_symbol_report?hgnc_id=1787), CDKN2, MTS1

Application Details

WB 1:500-1:2000
IHC 1:50-1:200
ICC/IF 1:50-1:200
IP 1:30
FC 1:100

Contents

Rabbit IgG in phosphate buffered saline, pH 7.4, 150mM NaCl, 0.02% sodium azide and 50% glycerol, 0.4-0.5mg/ml BSA.

Immunogen

A synthesized peptide derived from human p16 INK

Purification

Affinity-chromatography

Storage

Store at -20°C for one year. For short term storage and frequent use, store at 4°C for up to one month. Avoid repeated freeze-thaw cycles.

Anti-p16 INK Monoclonal Antibody - Protein Information

Name CDKN2A ([HGNC:1787](#))

Synonyms CDKN2, MTS1

Function

Acts as a negative regulator of the proliferation of normal cells by interacting strongly with CDK4 and CDK6. This inhibits their ability to interact with cyclins D and to phosphorylate the retinoblastoma protein.

Cellular Location

Cytoplasm. Nucleus

Tissue Location

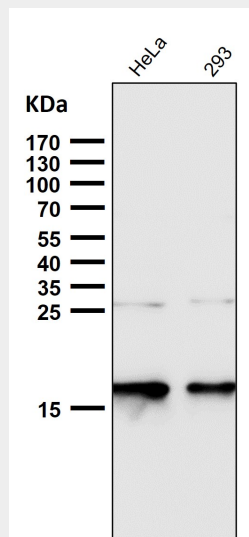
Widely expressed but not detected in brain or skeletal muscle. Isoform 3 is pancreas-specific

Anti-p16 INK Monoclonal Antibody - Protocols

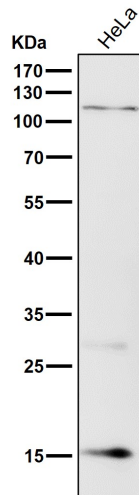
Provided below are standard protocols that you may find useful for product applications.

- [Western Blot](#)
- [Blocking Peptides](#)
- [Dot Blot](#)
- [Immunohistochemistry](#)
- [Immunofluorescence](#)
- [Immunoprecipitation](#)
- [Flow Cytometry](#)
- [Cell Culture](#)

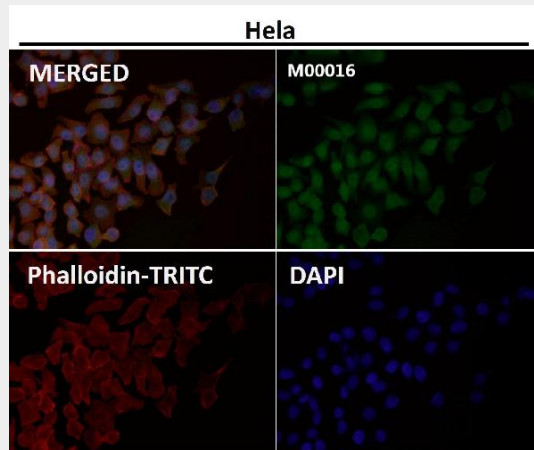
Anti-p16 INK Monoclonal Antibody - Images



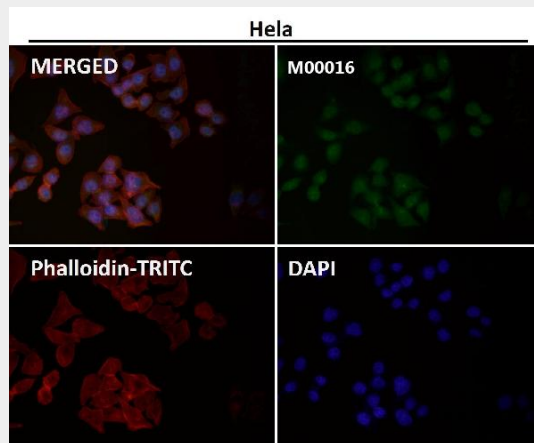
All lanes use the Antibody at 1:1K dilution for 1 hour at room temperature.



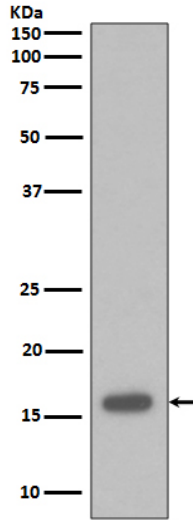
All lanes use the Antibody at 1:2K dilution for 1 hour at room temperature.



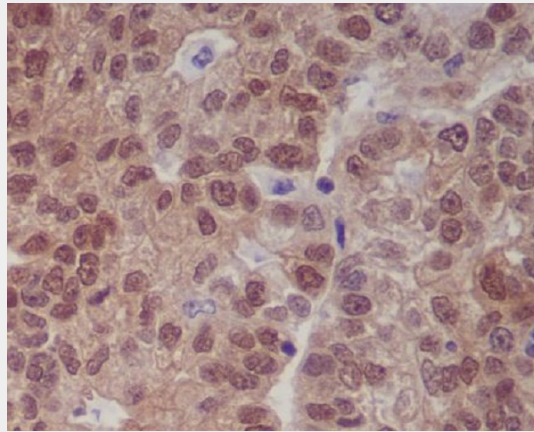
Immunofluorescent analysis using the Antibody at 1:50 dilution.



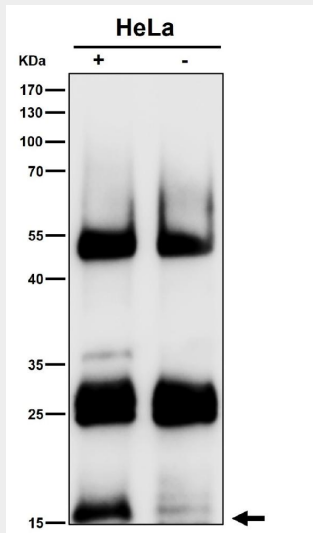
Immunofluorescent analysis using the Antibody at 1:150 dilution.



Western blot analysis of p16 INK expression in 293T cell lysate.



Immunohistochemical analysis of paraffin-embedded human gastric, using p16 INK Antibody.



Immunoprecipitate (IP) analysis using the Antibody at 1:50 dilution. (wb at 1:3K dilution)