

Anti-Histone H4 (acetyl K16) HIST1H4A Monoclonal Antibody
Catalog # ABO14361

Specification

Anti-Histone H4 (acetyl K16) HIST1H4A Monoclonal Antibody - Product Information

Application	WB, IHC, IF, ICC, FC
Primary Accession	P62805
Host	Rabbit
Isotype	Rabbit IgG
Reactivity	Rat, Human, Mouse
Clonality	Monoclonal
Format	Liquid

Description

Anti-Histone H4 (acetyl K16) HIST1H4A Monoclonal Antibody . Tested in WB, IHC, ICC/IF, Flow Cytometry applications. This antibody reacts with Human, Mouse, Rat.

Anti-Histone H4 (acetyl K16) HIST1H4A Monoclonal Antibody - Additional Information

Gene ID 121504;554313;8294;8359;8360;8361;8362;8363;8364;8365;8366;8367;8368;8370

Other Names

Histone H4, H4C1, H4/A, H4FA, HIST1H4A

Application Details

WB 1:500-1:2000
IHC 1:50-1:200
ICC/IF 1:50-1:200
FC 1:50

Contents

Rabbit IgG in phosphate buffered saline, pH 7.4, 150mM NaCl, 0.02% sodium azide and 50% glycerol, 0.4-0.5mg/ml BSA.

Immunogen

A synthesized peptide derived from human Histone H4 (acetyl K16)

Purification

Affinity-chromatography

Storage

Store at -20°C for one year. For short term storage and frequent use, store at 4°C for up to one month. Avoid repeated freeze-thaw cycles.

Anti-Histone H4 (acetyl K16) HIST1H4A Monoclonal Antibody - Protein Information

Name H4C1

Synonyms H4/A, H4FA, HIST1H4A

Function

Core component of nucleosome. Nucleosomes wrap and compact DNA into chromatin, limiting DNA accessibility to the cellular machineries which require DNA as a template. Histones thereby play a central role in transcription regulation, DNA repair, DNA replication and chromosomal stability. DNA accessibility is regulated via a complex set of post-translational modifications of histones, also called histone code, and nucleosome remodeling.

Cellular Location

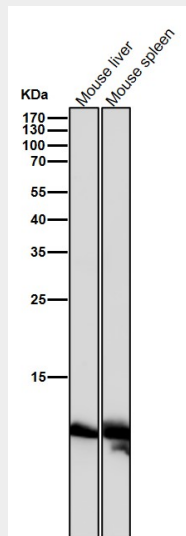
Nucleus. Chromosome.

Anti-Histone H4 (acetyl K16) HIST1H4A Monoclonal Antibody - Protocols

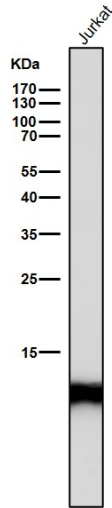
Provided below are standard protocols that you may find useful for product applications.

- [Western Blot](#)
- [Blocking Peptides](#)
- [Dot Blot](#)
- [Immunohistochemistry](#)
- [Immunofluorescence](#)
- [Immunoprecipitation](#)
- [Flow Cytometry](#)
- [Cell Culture](#)

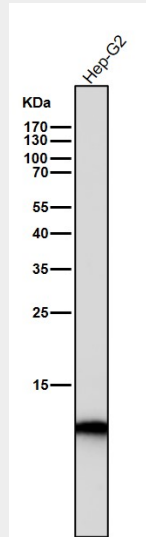
Anti-Histone H4 (acetyl K16) HIST1H4A Monoclonal Antibody - Images



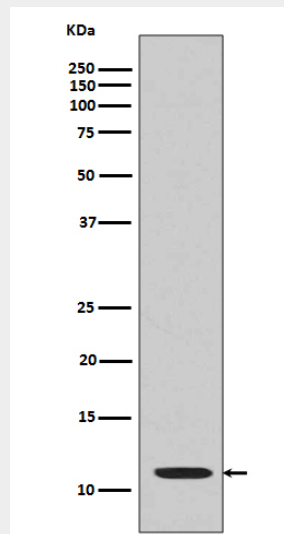
All lanes use the Antibody at 1:1K dilution for 1 hour at room temperature.



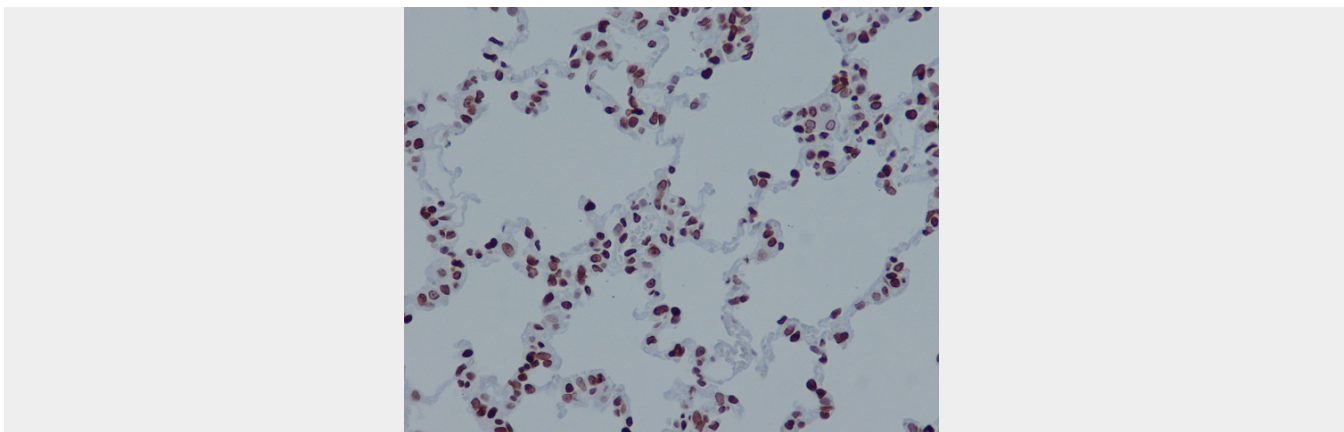
All lanes use the Antibody at 1:1K dilution for 1 hour at room temperature.



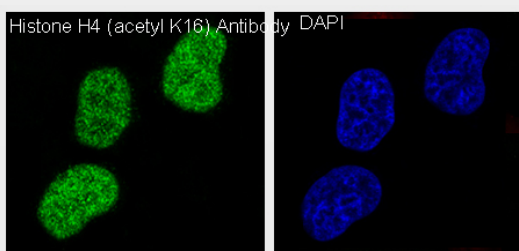
All lanes use the Antibody at 1:1K dilution for 1 hour at room temperature.



Western blot analysis of Acetyl-Histone H4 (K16) expression in HeLa cell lysate treated with TSA.



Immunohistochemical analysis of paraffin-embedded rat lung, using Histone H4 (acetyl K16) Antibody.



Immunofluorescent analysis of HeLa cells treated with TSA, using Histone H4 (acetyl K16) Antibody.