

## Anti-Phospho-Histone H3 (S10) HIST1H3A Rabbit Monoclonal Antibody Catalog # ABO14356

### Specification

#### Anti-Phospho-Histone H3 (S10) HIST1H3A Rabbit Monoclonal Antibody - Product Information

Application	WB, IHC, IF, ICC, IP
Primary Accession	<a href="#">P68431</a>
Host	Rabbit
Isotype	Rabbit IgG
Reactivity	Rat, Human, Mouse
Clonality	Monoclonal
Format	Liquid

#### Description

Anti-Phospho-Histone H3 (S10) HIST1H3A Rabbit Monoclonal Antibody . Tested in WB, IHC, ICC/IF, IP applications. This antibody reacts with Human, Mouse, Rat.

#### Anti-Phospho-Histone H3 (S10) HIST1H3A Rabbit Monoclonal Antibody - Additional Information

**Gene ID** 8350;8351;8352;8353;8354;8355;8356;8357;8358;8968

#### Other Names

Histone H3.1, Histone H3/a, Histone H3/b, Histone H3/c, Histone H3/d, Histone H3/f, Histone H3/h, Histone H3/i, Histone H3/j, Histone H3/k, Histone H3/l, H3C1 ([http://www.genenames.org/cgi-bin/gene\\_symbol\\_report?hgnc\\_id=4766](http://www.genenames.org/cgi-bin/gene_symbol_report?hgnc_id=4766))>HGNC:4766</a>), H3FA, HIST1H3A

#### Application Details

WB 1:1000-1:2000<br>IHC 1:50-1:200<br>ICC/IF 1:50-1:200<br>IP 1:50

#### Contents

Rabbit IgG in phosphate buffered saline, pH 7.4, 150mM NaCl, 0.02% sodium azide and 50% glycerol, 0.4-0.5mg/ml BSA.

#### Immunogen

A synthesized peptide derived from human Phospho-Histone H3 (S10).

#### Purification

Affinity-chromatography

#### Storage

Store at -20°C for one year. For short term storage and frequent use, store at 4°C for up to one month. Avoid repeated freeze-thaw cycles.

#### Anti-Phospho-Histone H3 (S10) HIST1H3A Rabbit Monoclonal Antibody - Protein Information

**Name** H3C1 ([HGNC:4766](#))

**Synonyms** H3FA, HIST1H3A

**Function**

Core component of nucleosome. Nucleosomes wrap and compact DNA into chromatin, limiting DNA accessibility to the cellular machineries which require DNA as a template. Histones thereby play a central role in transcription regulation, DNA repair, DNA replication and chromosomal stability. DNA accessibility is regulated via a complex set of post-translational modifications of histones, also called histone code, and nucleosome remodeling.

**Cellular Location**

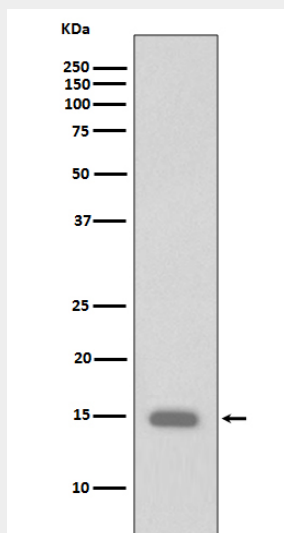
Nucleus. Chromosome.

**Anti-Phospho-Histone H3 (S10) HIST1H3A Rabbit Monoclonal Antibody - Protocols**

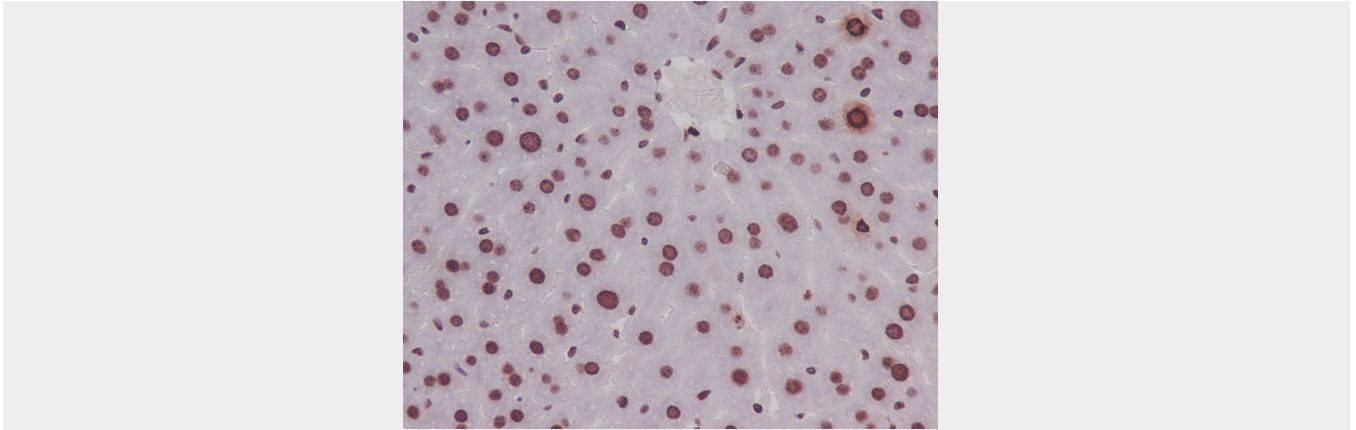
Provided below are standard protocols that you may find useful for product applications.

- [Western Blot](#)
- [Blocking Peptides](#)
- [Dot Blot](#)
- [Immunohistochemistry](#)
- [Immunofluorescence](#)
- [Immunoprecipitation](#)
- [Flow Cytometry](#)
- [Cell Culture](#)

**Anti-Phospho-Histone H3 (S10) HIST1H3A Rabbit Monoclonal Antibody - Images**



Western blot analysis of Phospho-Histone H3 (S10) expression in HeLa cell lysate treated with calyculin A.



Immunohistochemical analysis of paraffin-embedded mouse liver, using Phospho-Histone H3 (S10) Antibody.