

Anti-CRM1 XPO1 Antibody Picoband™ (monoclonal, 5G3)
Catalog # ABO14339

Specification

Anti-CRM1 XPO1 Antibody Picoband™ (monoclonal, 5G3) - Product Information

Application	WB, IHC, IF, ICC, FC
Primary Accession	O14980
Host	Mouse
Isotype	Mouse IgG2b
Reactivity	Rat, Human, Mouse
Clonality	Monoclonal
Format	Lyophilized

Description

Anti-CRM1 XPO1 Antibody Picoband™ (monoclonal, 5G3) . Tested in Flow Cytometry, IF, IHC, ICC, WB applications. This antibody reacts with Human, Mouse, Rat.

Reconstitution

Add 0.2ml of distilled water will yield a concentration of 500ug/ml.

Anti-CRM1 XPO1 Antibody Picoband™ (monoclonal, 5G3) - Additional Information

Gene ID 7514

Other Names

Exportin-1, Exp1, Chromosome region maintenance 1 protein homolog, XPO1, CRM1

Calculated MW

123 kDa KDa

Application Details

Western blot, 0.1-0.5 µg/ml
 Immunohistochemistry (Paraffin-embedded Section), 0.5-1 µg/ml
 Immunocytochemistry/Immunofluorescence, 5 µg/ml
 Flow Cytometry, 1-3 µg/1x10⁶ cells

Subcellular Localization

Cytoplasm. Nucleus, nucleoplasm. Nucleus, Cajal body. Nucleus, nucleolus. Located in the nucleoplasm, Cajal bodies and nucleoli. Shuttles between the nucleus/nucleolus and the cytoplasm.

Tissue Specificity

Expressed in heart, brain, placenta, lung, liver, skeletal muscle, pancreas, spleen, thymus, prostate, testis, ovary, small intestine, colon and peripheral blood leukocytes. Not expressed in the kidney.

Contents

Each vial contains 4mg Trehalose, 0.9mg NaCl, 0.2mg Na₂HPO₄, 0.05mg NaN₃.

Immunogen

E.coli-derived human CRM1 recombinant protein (Position: N966-D1071). Human CRM1 shares

93.4% and 91.5% amino acid (aa) sequence identity with mouse and rat CRM1, respectively.

Cross Reactivity

No cross-reactivity with other proteins.

Storage

Store at -20°C for one year from date of receipt. After reconstitution, at 4°C for one month. It can also be aliquotted and stored frozen at -20°C for six months. Avoid repeated freeze-thaw cycles.

Anti-CRM1 XPO1 Antibody Picoband™ (monoclonal, 5G3) - Protein Information

Name XPO1

Synonyms CRM1

Function

Mediates the nuclear export of cellular proteins (cargos) bearing a leucine-rich nuclear export signal (NES) and of RNAs. In the nucleus, in association with RANBP3, binds cooperatively to the NES on its target protein and to the GTPase RAN in its active GTP-bound form (Ran-GTP). Docking of this complex to the nuclear pore complex (NPC) is mediated through binding to nucleoporins. Upon transit of a nuclear export complex into the cytoplasm, disassembling of the complex and hydrolysis of Ran-GTP to Ran-GDP (induced by RANBP1 and RANGAP1, respectively) cause release of the cargo from the export receptor. The directionality of nuclear export is thought to be conferred by an asymmetric distribution of the GTP- and GDP-bound forms of Ran between the cytoplasm and nucleus. Involved in U3 snoRNA transport from Cajal bodies to nucleoli. Binds to late precursor U3 snoRNA bearing a TMG cap.

Cellular Location

Cytoplasm. Nucleus, nucleoplasm. Nucleus, Cajal body. Nucleus, nucleolus. Note=Located in the nucleoplasm, Cajal bodies and nucleoli. Shuttles between the nucleus/nucleolus and the cytoplasm

Tissue Location

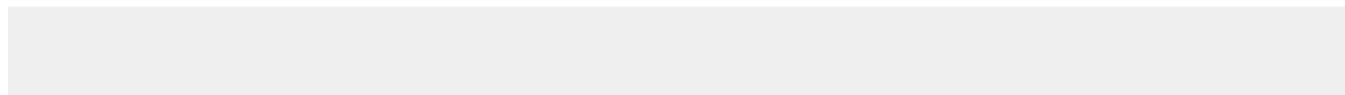
Expressed in heart, brain, placenta, lung, liver, skeletal muscle, pancreas, spleen, thymus, prostate, testis, ovary, small intestine, colon and peripheral blood leukocytes. Not expressed in the kidney.

Anti-CRM1 XPO1 Antibody Picoband™ (monoclonal, 5G3) - Protocols

Provided below are standard protocols that you may find useful for product applications.

- [Western Blot](#)
- [Blocking Peptides](#)
- [Dot Blot](#)
- [Immunohistochemistry](#)
- [Immunofluorescence](#)
- [Immunoprecipitation](#)
- [Flow Cytometry](#)
- [Cell Culture](#)

Anti-CRM1 XPO1 Antibody Picoband™ (monoclonal, 5G3) - Images



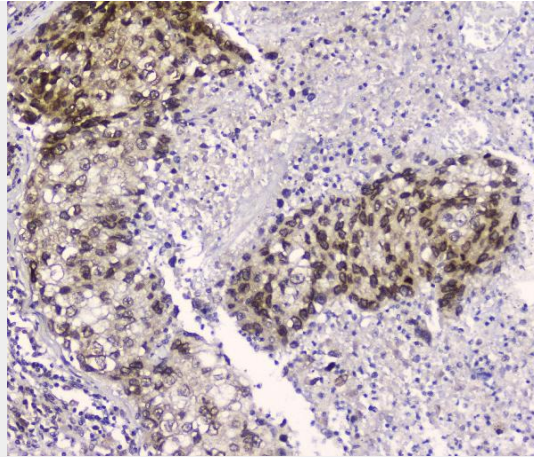


Figure 2. IHC analysis of CRM1 using anti-CRM1 antibody (M01180).

CRM1 was detected in paraffin-embedded section of human lung cancer tissue. Heat mediated antigen retrieval was performed in citrate buffer (pH6, epitope retrieval solution) for 20 mins. The tissue section was blocked with 10% goat serum. The tissue section was then incubated with 2 μ g/ml mouse anti-CRM1 Antibody (M01180) overnight at 4°C. Biotinylated goat anti-mouse IgG was used as secondary antibody and incubated for 30 minutes at 37°C. The tissue section was developed using Streptavidin-Biotin-Complex (SABC)(Catalog # SA1021) with DAB as the chromogen.

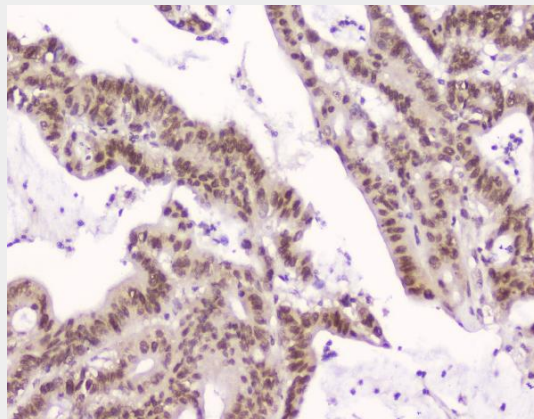


Figure 3. IHC analysis of CRM1 using anti-CRM1 antibody (M01180).

CRM1 was detected in paraffin-embedded section of human intestinal cancer tissue. Heat mediated antigen retrieval was performed in citrate buffer (pH6, epitope retrieval solution) for 20 mins. The tissue section was blocked with 10% goat serum. The tissue section was then incubated with 2 μ g/ml mouse anti-CRM1 Antibody (M01180) overnight at 4°C. Biotinylated goat anti-mouse IgG was used as secondary antibody and incubated for 30 minutes at 37°C. The tissue section was developed using Streptavidin-Biotin-Complex (SABC)(Catalog # SA1021) with DAB as the chromogen.

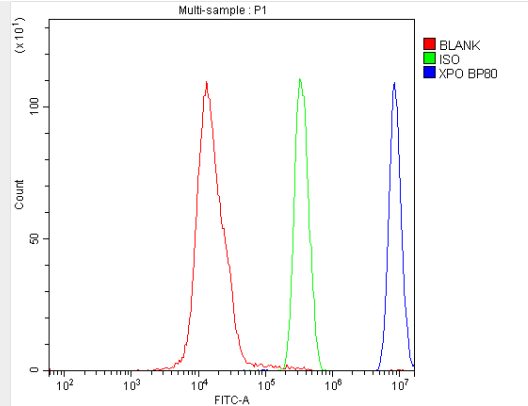


Figure 4. Flow Cytometry analysis of SiHa cells using anti-CRM1 antibody (M01180). Overlay histogram showing SiHa cells stained with M01180 (Blue line). The cells were blocked with 10% normal goat serum. And then incubated with mouse anti-CRM1 Antibody (M01180, 1 $\mu\text{g}/1 \times 10^6$ cells) for 30 min at 20°C. DyLight®488 conjugated goat anti-mouse IgG (BA1126, 5-10 $\mu\text{g}/1 \times 10^6$ cells) was used as secondary antibody for 30 minutes at 20°C. Isotype control antibody (Green line) was rabbit IgG (1 $\mu\text{g}/1 \times 10^6$) used under the same conditions. Unlabelled sample (Red line) was also used as a control.

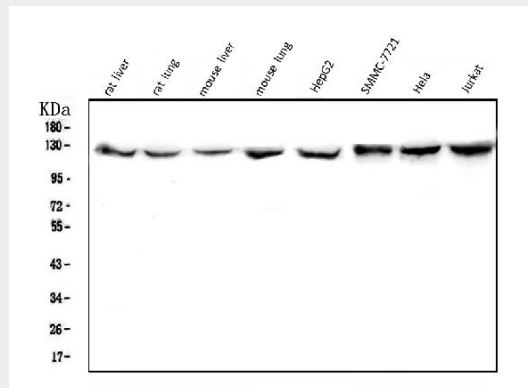


Figure 1. Western blot analysis of CRM1 using anti-CRM1 antibody (M01180). Electrophoresis was performed on a 5-20% SDS-PAGE gel at 70V (Stacking gel) / 90V (Resolving gel) for 2-3 hours. The sample well of each lane was loaded with 30 μg of sample under reducing conditions.

- Lane 1: rat liver tissue lysates,
- Lane 2: rat lung tissue lysates,
- Lane 3: mouse liver tissue lysates,
- Lane 4: mouse lung tissue lysates,
- Lane 5: human HepG2 whole cell lysates,
- Lane 6: human SMMC-7721 whole cell lysates,
- Lane 7: human Hela whole cell lysates,
- Lane 8: human Jurkat whole cell lysates.

After electrophoresis, proteins were transferred to a nitrocellulose membrane at 150 mA for 50-90 minutes. Blocked the membrane with 5% non-fat milk/TBS for 1.5 hour at RT. The membrane was incubated with mouse anti-CRM1 antigen affinity purified monoclonal antibody (Catalog # M01180) at 0.5 $\mu\text{g}/\text{mL}$ overnight at 4°C, then washed with TBS-0.1% Tween 3 times with 5 minutes each and probed with a goat anti-mouse IgG-HRP secondary antibody at a dilution of 1:10000 for 1.5 hour at RT. The signal is developed using an Enhanced Chemiluminescent detection (ECL) kit (Catalog # EK1001) with Tanon 5200 system. A specific band was detected for CRM1 at approximately 123 kDa. The expected band size for CRM1 is at 123 kDa.

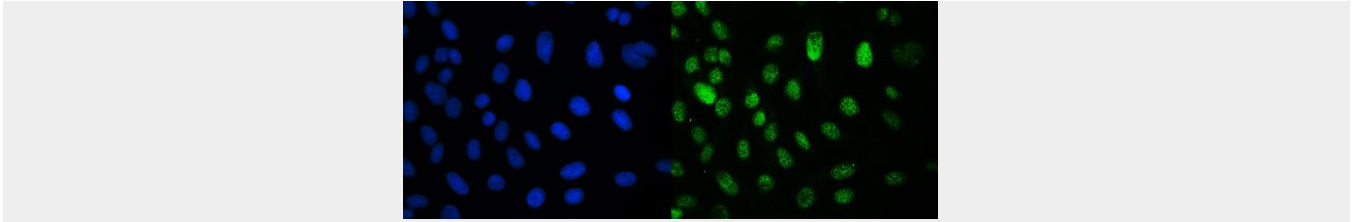


Figure 5. IF analysis of CRM1 using anti-CRM1 antibody (M01180). CRM1 was detected in immunocytochemical section of U2OS cells. Enzyme antigen retrieval was performed using IHC enzyme antigen retrieval reagent (AR0022) for 15 mins. The cells were blocked with 10% goat serum. And then incubated with 2 $\mu\text{g}/\text{mL}$ mouse anti- CRM1 Antibody (M01180) overnight at 4°C. DyLight®488 Conjugated Goat Anti-Mouse IgG (BA1126) was used as secondary antibody at 1:100 dilution and incubated for 30 minutes at 37°C. The section was counterstained with DAPI. Visualize using a fluorescence microscope and filter sets appropriate for the label used.

Anti-CRM1 XPO1 Antibody Picoband™ (monoclonal, 5G3) - Background

Exportin 1 (XPO1), also known as chromosomal maintenance 1 (CRM1), is an eukaryotic protein that mapped to human chromosome 2p16 by fluorescence in situ hybridization. This protein mediates leucine-rich nuclear export signal (NES)-dependent protein transport. It specifically inhibits the nuclear export of Rev and U snRNAs. Additionally, this protein is involved in the control of several cellular processes by controlling the localization of cyclin B, MPAK, and MAPKAP kinase 2. It also regulates NFAT and AP-1.