

Anti-Histone H3 (mono methyl R17) HIST1H3A Rabbit Monoclonal Antibody
Catalog # ABO14317

Specification

Anti-Histone H3 (mono methyl R17) HIST1H3A Rabbit Monoclonal Antibody - Product Information

Application	WB, IHC, IF, ICC
Primary Accession	P68431
Host	Rabbit
Isotype	Rabbit IgG
Reactivity	Rat, Human, Mouse
Clonality	Monoclonal
Format	Liquid

Description

Anti-Histone H3 (mono methyl R17) HIST1H3A Rabbit Monoclonal Antibody . Tested in WB, IHC, ICC/IF applications. This antibody reacts with Human, Mouse, Rat.

Anti-Histone H3 (mono methyl R17) HIST1H3A Rabbit Monoclonal Antibody - Additional Information

Gene ID 8350;8351;8352;8353;8354;8355;8356;8357;8358;8968

Other Names

Histone H3.1, Histone H3/a, Histone H3/b, Histone H3/c, Histone H3/d, Histone H3/f, Histone H3/h, Histone H3/i, Histone H3/j, Histone H3/k, Histone H3/l, H3C1 ([HGNC:4766](http://www.genenames.org/cgi-bin/gene_symbol_report?hgnc_id=4766)), H3FA, HIST1H3A

Calculated MW

15404 MW KDa

Application Details

WB 1:100-1:2000
IHC 1:100-1:250
ICC/IF 1:100-1:250

Subcellular Localization

Nucleus. Chromosome.

Contents

Rabbit IgG in phosphate buffered saline, pH 7.4, 150mM NaCl, 0.02% sodium azide and 50% glycerol, 0.4-0.5mg/ml BSA.

Immunogen

A synthesized peptide derived from human Histone H3 (mono methyl R17)

Purification

Affinity-chromatography

Storage

Store at -20°C for one year. For short term storage and frequent use, store at 4°C for

up to one month. Avoid repeated
freeze-thaw cycles.

Anti-Histone H3 (mono methyl R17) HIST1H3A Rabbit Monoclonal Antibody - Protein Information

Name H3C1 ([HGNC:4766](#))

Synonyms H3FA, HIST1H3A

Function

Core component of nucleosome. Nucleosomes wrap and compact DNA into chromatin, limiting DNA accessibility to the cellular machineries which require DNA as a template. Histones thereby play a central role in transcription regulation, DNA repair, DNA replication and chromosomal stability. DNA accessibility is regulated via a complex set of post-translational modifications of histones, also called histone code, and nucleosome remodeling.

Cellular Location

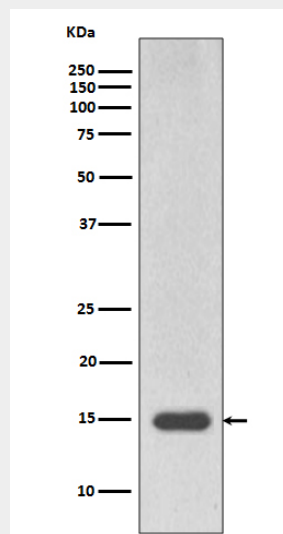
Nucleus. Chromosome.

Anti-Histone H3 (mono methyl R17) HIST1H3A Rabbit Monoclonal Antibody - Protocols

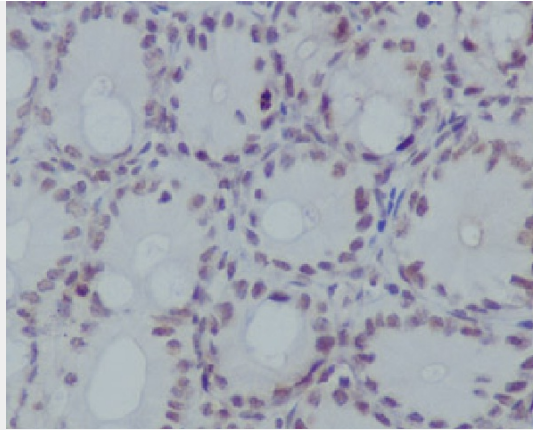
Provided below are standard protocols that you may find useful for product applications.

- [Western Blot](#)
- [Blocking Peptides](#)
- [Dot Blot](#)
- [Immunohistochemistry](#)
- [Immunofluorescence](#)
- [Immunoprecipitation](#)
- [Flow Cytometry](#)
- [Cell Culture](#)

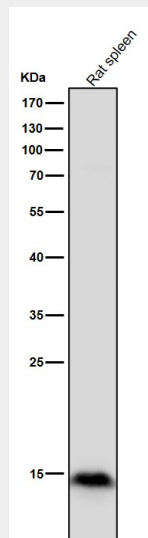
Anti-Histone H3 (mono methyl R17) HIST1H3A Rabbit Monoclonal Antibody - Images



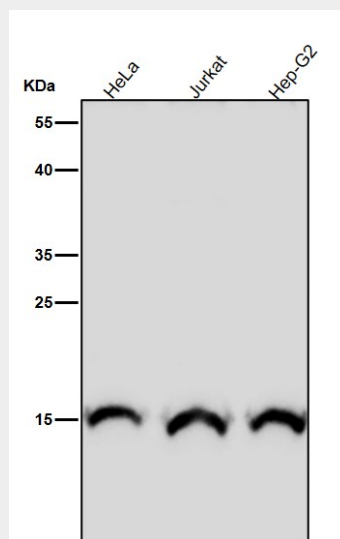
Western blot analysis of Histone H3 (mono methyl R17) expression in HeLa cell lysate.



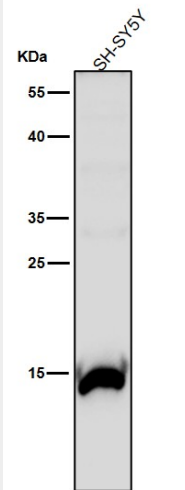
Immunohistochemical analysis of paraffin-embedded mouse colon, using Histone H3 (mono methyl R17) Antibody.



All lanes use the Antibody at 1:1K dilution for 1 hour at room temperature.



All lanes use the Antibody at 1:1K dilution for 1 hour at room temperature.



All lanes use the Antibody at 1:1K dilution for 1 hour at room temperature.