

**Anti-alpha smooth muscle Actin ACTA2 Rabbit Monoclonal Antibody**  
Catalog # ABO14305

**Specification**

---

**Anti-alpha smooth muscle Actin ACTA2 Rabbit Monoclonal Antibody - Product Information**

Application	WB, IHC, IP, FC
Primary Accession	<a href="#">P62736</a>
Host	Rabbit
Isotype	Rabbit IgG
Reactivity	Rat, Human, Mouse
Clonality	Monoclonal
Format	Liquid

**Description**

Anti-alpha smooth muscle Actin ACTA2 Rabbit Monoclonal Antibody . Tested in WB, IHC, IP, Flow Cytometry applications. This antibody reacts with Human, Mouse, Rat.

**Anti-alpha smooth muscle Actin ACTA2 Rabbit Monoclonal Antibody - Additional Information**

**Gene ID** 59

**Other Names**

Actin, aortic smooth muscle, 3.6.4.-, Alpha-actin-2, Cell growth-inhibiting gene 46 protein, Actin, aortic smooth muscle, intermediate form, ACTA2, ACTSA, ACTVS

**Calculated MW**

42009 MW KDa

**Application Details**

WB 1:500-1:2000<br>IHC 1:50-1:200<br>IP 1:30<br>FC 1:50

**Subcellular Localization**

Cytoplasm, cytoskeleton.

**Contents**

Rabbit IgG in phosphate buffered saline, pH 7.4, 150mM NaCl, 0.02% sodium azide and 50% glycerol, 0.4-0.5mg/ml BSA.

**Immunogen**

A synthesized peptide derived from human alpha smooth muscle Actin

**Purification**

Affinity-chromatography

**Storage**

**Store at -20°C for one year. For short term storage and frequent use, store at 4°C for up to one month. Avoid repeated freeze-thaw cycles.**

## Anti-alpha smooth muscle Actin ACTA2 Rabbit Monoclonal Antibody - Protein Information

**Name** ACTA2

**Synonyms** ACTSA, ACTVS

### Function

Actins are highly conserved proteins that are involved in various types of cell motility and are ubiquitously expressed in all eukaryotic cells.

### Cellular Location

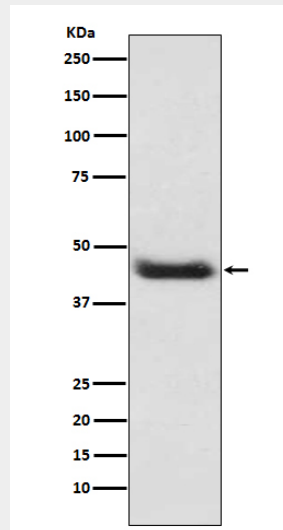
Cytoplasm, cytoskeleton.

## Anti-alpha smooth muscle Actin ACTA2 Rabbit Monoclonal Antibody - Protocols

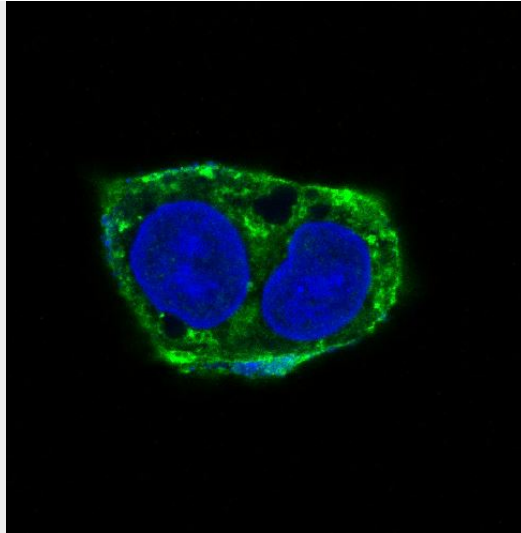
Provided below are standard protocols that you may find useful for product applications.

- [Western Blot](#)
- [Blocking Peptides](#)
- [Dot Blot](#)
- [Immunohistochemistry](#)
- [Immunofluorescence](#)
- [Immunoprecipitation](#)
- [Flow Cytometry](#)
- [Cell Culture](#)

## Anti-alpha smooth muscle Actin ACTA2 Rabbit Monoclonal Antibody - Images



Western blot analysis of alpha smooth muscle Actin expression in A431 cell lysate.



Immunofluorescent analysis of HepG2 cells, using alpha smooth muscle Actin Antibody.