

Anti-Cytokeratin 5 (C-term) KRT5 Rabbit Monoclonal Antibody Catalog # ABO14289

Specification

Anti-Cytokeratin 5 (C-term) KRT5 Rabbit Monoclonal Antibody - Product Information

Application	WB, IHC, IF, ICC
Primary Accession	P13647
Host	Rabbit
Isotype	Rabbit IgG
Reactivity	Human, Mouse
Clonality	Monoclonal
Format	Liquid

Description

Anti-Cytokeratin 5 (C-term) KRT5 Rabbit Monoclonal Antibody . Tested in WB, IHC, ICC/IF applications. This antibody reacts with Human, Mouse.

Anti-Cytokeratin 5 (C-term) KRT5 Rabbit Monoclonal Antibody - Additional Information

Gene ID 3852

Other Names

Keratin, type II cytoskeletal 5, 58 kDa cyokeratin, Cytokeratin-5, CK-5, Keratin-5, K5, Type-II keratin Kb5, KRT5

Calculated MW

62378 MW KDa

Application Details

WB 1:500-1:2000
IHC 1:50-1:200
ICC/IF 1:50-1:200

Contents

Rabbit IgG in phosphate buffered saline, pH 7.4, 150mM NaCl, 0.02% sodium azide and 50% glycerol, 0.4-0.5mg/ml BSA.

Immunogen

A synthesized peptide derived from human Cytokeratin 5 (C-term)

Purification

Affinity-chromatography

Storage

Store at -20°C for one year. For short term storage and frequent use, store at 4°C for up to one month. Avoid repeated freeze-thaw cycles.

Anti-Cytokeratin 5 (C-term) KRT5 Rabbit Monoclonal Antibody - Protein Information

Name KRT5

Function

Required for the formation of keratin intermediate filaments in the basal epidermis and maintenance of the skin barrier in response to mechanical stress (By similarity). Regulates the recruitment of Langerhans cells to the epidermis, potentially by modulation of the abundance of macrophage chemotactic cytokines, macrophage inflammatory cytokines and CTNND1 localization in keratinocytes (By similarity).

Cellular Location

Cytoplasm.

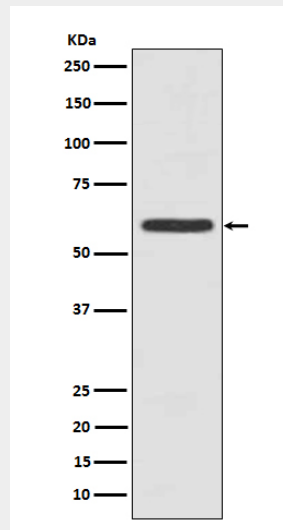
Tissue Location

Expressed in corneal epithelium (at protein level) (PubMed:26758872). Expressed in keratinocytes (at protein level) (PubMed:20128788, PubMed:31302245).

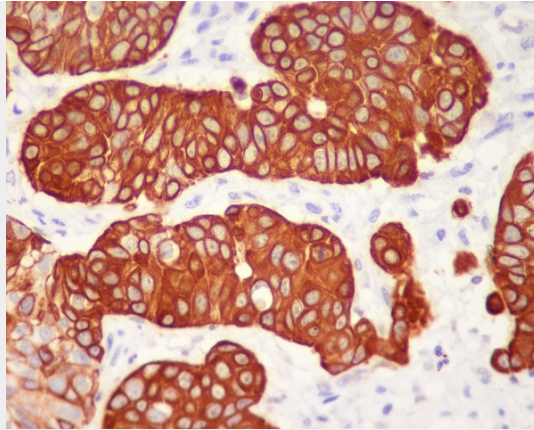
Anti-Cytokeratin 5 (C-term) KRT5 Rabbit Monoclonal Antibody - Protocols

Provided below are standard protocols that you may find useful for product applications.

- [Western Blot](#)
- [Blocking Peptides](#)
- [Dot Blot](#)
- [Immunohistochemistry](#)
- [Immunofluorescence](#)
- [Immunoprecipitation](#)
- [Flow Cytometry](#)
- [Cell Culture](#)

Anti-Cytokeratin 5 (C-term) KRT5 Rabbit Monoclonal Antibody - Images

Western blot analysis of Cytokeratin 5 expression in A431 cell lysate.



Immunohistochemical analysis of paraffin-embedded human urothelial carcinoma, using Cytokeratin 5 (C-term) Antibody.