

Anti-Topoisomerase II alpha TOP2A Rabbit Monoclonal Antibody
Catalog # ABO14288

Specification

Anti-Topoisomerase II alpha TOP2A Rabbit Monoclonal Antibody - Product Information

Application	WB, IHC, IP
Primary Accession	P11388
Host	Rabbit
Isotype	Rabbit IgG
Reactivity	Rat, Human, Mouse
Clonality	Monoclonal
Format	Liquid

Description

Anti-Topoisomerase II alpha TOP2A Rabbit Monoclonal Antibody . Tested in WB, IHC, IP applications. This antibody reacts with Human, Mouse, Rat.

Anti-Topoisomerase II alpha TOP2A Rabbit Monoclonal Antibody - Additional Information

Gene ID 7153

Other Names

DNA topoisomerase 2-alpha, 5.6.2.2 {ECO:0000255|PROSITE-ProRule:PRU00995, ECO:0000269|PubMed:19222228, ECO:0000269|PubMed:19697956}, DNA topoisomerase II, alpha isozyme, TOP2A, TOP2

Calculated MW

174385 MW KDa

Application Details

WB 1:500-1:2000
IHC 1:50-1:200
IP 1:50

Subcellular Localization

Cytoplasm. Nucleus, nucleoplasm. Generally located in the nucleoplasm.

Contents

Rabbit IgG in phosphate buffered saline, pH 7.4, 150mM NaCl, 0.02% sodium azide and 50% glycerol, 0.4-0.5mg/ml BSA.

Immunogen

A synthesized peptide derived from human Topoisomerase II alpha

Purification

Affinity-chromatography

Storage

Store at -20°C for one year. For short term storage and frequent use, store at 4°C for up to one month. Avoid repeated freeze-thaw cycles.

Anti-Topoisomerase II alpha TOP2A Rabbit Monoclonal Antibody - Protein Information

Name TOP2A

Synonyms TOP2

Function

Key decatenating enzyme that alters DNA topology by binding to two double-stranded DNA molecules, generating a double-stranded break in one of the strands, passing the intact strand through the broken strand, and religating the broken strand (PubMed:17567603, PubMed:18790802, PubMed:22013166, PubMed:22323612). May play a role in regulating the period length of BMAL1 transcriptional oscillation (By similarity).

Cellular Location

Cytoplasm. Nucleus, nucleoplasm. Nucleus. Nucleus, nucleolus

Tissue Location

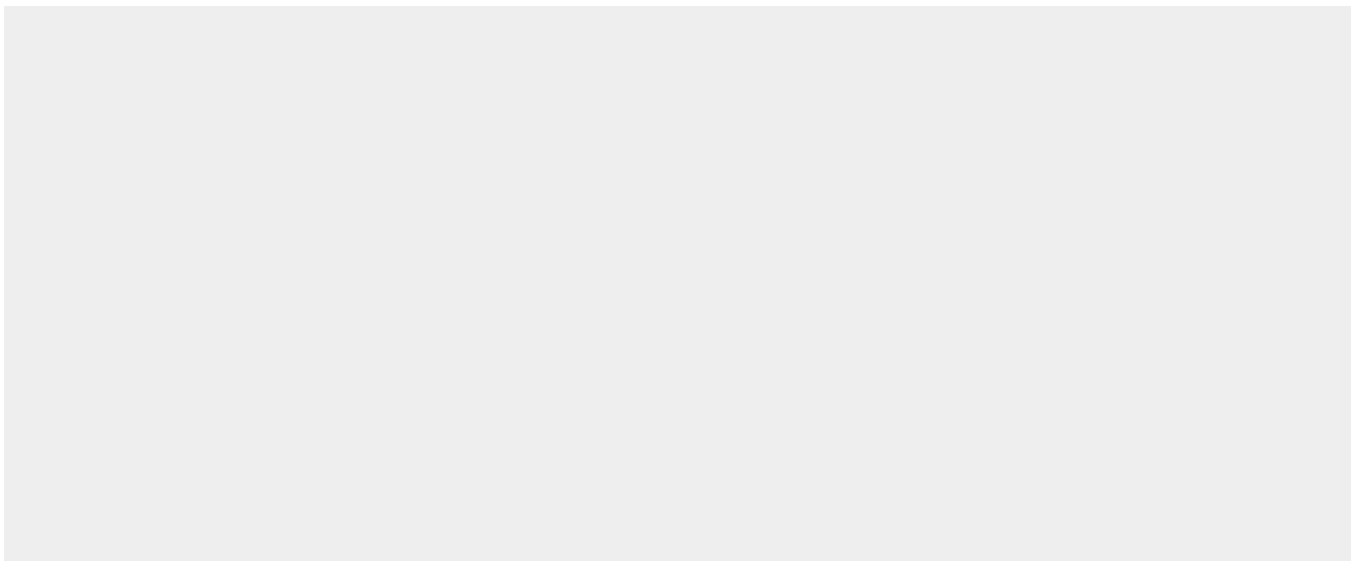
Expressed in the tonsil, spleen, lymph node, thymus, skin, pancreas, testis, colon, kidney, liver, brain and lung (PubMed:9155056). Also found in high-grade lymphomas, squamous cell lung tumors and seminomas (PubMed:9155056)

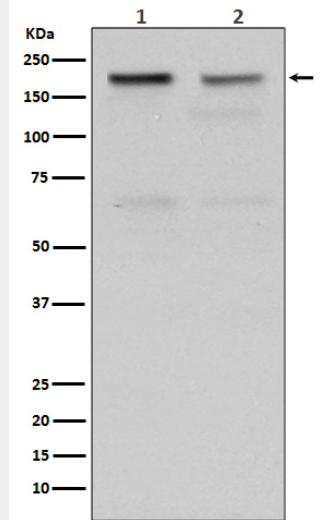
Anti-Topoisomerase II alpha TOP2A Rabbit Monoclonal Antibody - Protocols

Provided below are standard protocols that you may find useful for product applications.

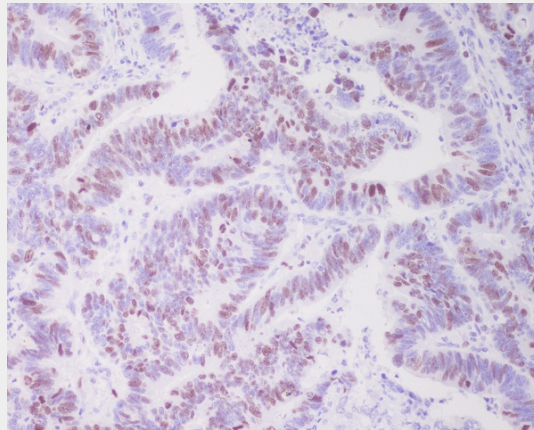
- [Western Blot](#)
- [Blocking Peptides](#)
- [Dot Blot](#)
- [Immunohistochemistry](#)
- [Immunofluorescence](#)
- [Immunoprecipitation](#)
- [Flow Cytometry](#)
- [Cell Culture](#)

Anti-Topoisomerase II alpha TOP2A Rabbit Monoclonal Antibody - Images





Western blot analysis of Topoisomerase II alpha expression in (1) HeLa cell lysate; (2) Jurkat cell lysate.



Immunohistochemical analysis of paraffin-embedded human colon cancer, using Topoisomerase II alpha Antibody.