

**Anti-PI 3 Kinase p55 gamma PIK3R3 Rabbit Monoclonal Antibody**  
Catalog # ABO14285

**Specification**

**Anti-PI 3 Kinase p55 gamma PIK3R3 Rabbit Monoclonal Antibody - Product Information**

Application	WB, IHC, IF, ICC
Primary Accession	<a href="#">Q92569</a>
Host	Rabbit
Isotype	Rabbit IgG
Reactivity	Rat, Human, Mouse
Clonality	Monoclonal
Format	Liquid

**Description**

Anti-PI 3 Kinase p55 gamma PIK3R3 Rabbit Monoclonal Antibody . Tested in WB, IHC, ICC/IF applications. This antibody reacts with Human, Mouse, Rat.

**Anti-PI 3 Kinase p55 gamma PIK3R3 Rabbit Monoclonal Antibody - Additional Information**

**Gene ID** 8503

**Other Names**

Phosphatidylinositol 3-kinase regulatory subunit gamma, PI3-kinase regulatory subunit gamma, PI3K regulatory subunit gamma, PtdIns-3-kinase regulatory subunit gamma, Phosphatidylinositol 3-kinase 55 kDa regulatory subunit gamma, PI3-kinase subunit p55-gamma, PtdIns-3-kinase regulatory subunit p55-gamma, p55PIK, PIK3R3

**Calculated MW**

54448 MW KDa

**Application Details**

WB 1:500-1:1000<br>IHC 1:50-1:200<br>ICC/IF 1:50-1:200

**Tissue Specificity**

Highest levels in brain and testis. Lower levels in adipose tissue, kidney, heart, lung and skeletal muscle.

**Contents**

Rabbit IgG in phosphate buffered saline, pH 7.4, 150mM NaCl, 0.02% sodium azide and 50% glycerol, 0.4-0.5mg/ml BSA.

**Immunogen**

A synthesized peptide derived from human PI 3 Kinase p55 gamma

**Purification**

Affinity-chromatography

**Storage**

**Store at -20°C for one year. For short term storage and frequent use, store at 4°C for up to one month. Avoid repeated**

freeze-thaw cycles.

## Anti-PI 3 Kinase p55 gamma PIK3R3 Rabbit Monoclonal Antibody - Protein Information

**Name** PIK3R3

### Function

Binds to activated (phosphorylated) protein-tyrosine kinases through its SH2 domain and regulates their kinase activity. During insulin stimulation, it also binds to IRS-1.

### Tissue Location

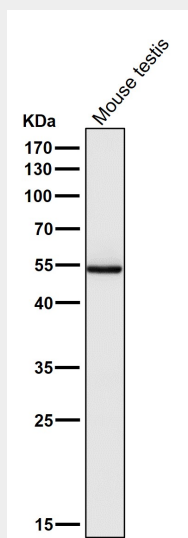
Highest levels in brain and testis. Lower levels in adipose tissue, kidney, heart, lung and skeletal muscle

## Anti-PI 3 Kinase p55 gamma PIK3R3 Rabbit Monoclonal Antibody - Protocols

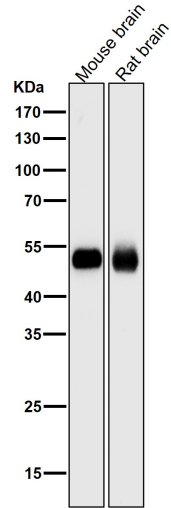
Provided below are standard protocols that you may find useful for product applications.

- [Western Blot](#)
- [Blocking Peptides](#)
- [Dot Blot](#)
- [Immunohistochemistry](#)
- [Immunofluorescence](#)
- [Immunoprecipitation](#)
- [Flow Cytometry](#)
- [Cell Culture](#)

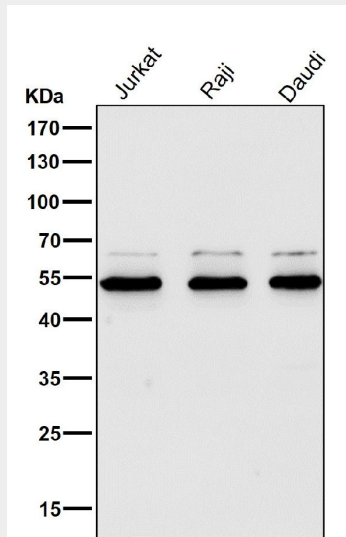
## Anti-PI 3 Kinase p55 gamma PIK3R3 Rabbit Monoclonal Antibody - Images



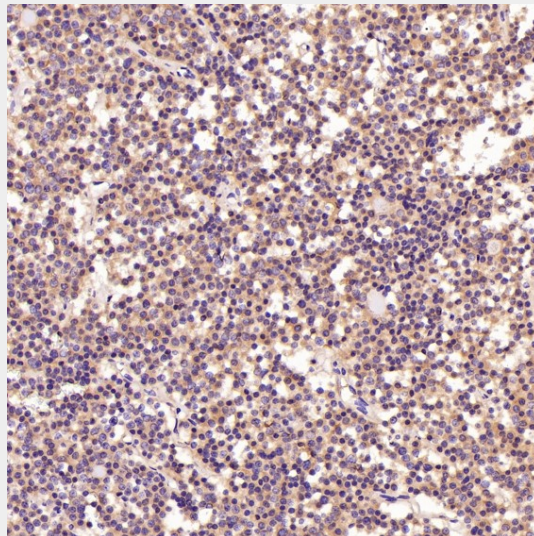
All lanes use the Antibody at 1:2K dilution for 1 hour at room temperature.



All lanes use the Antibody at 1:2K dilution for 1 hour at room temperature.

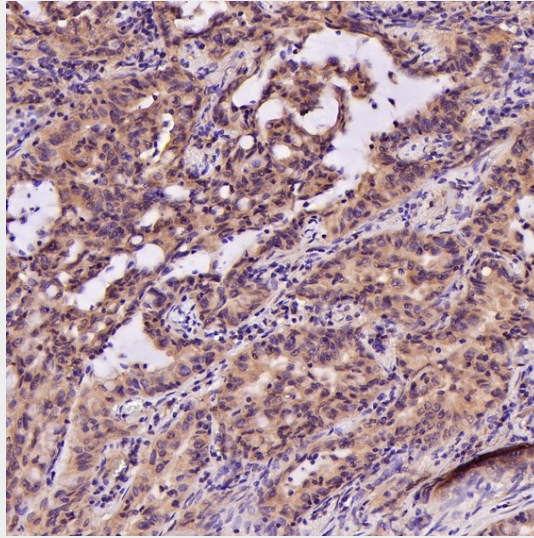


All lanes use the Antibody at 1:2K dilution for 1 hour at room temperature.

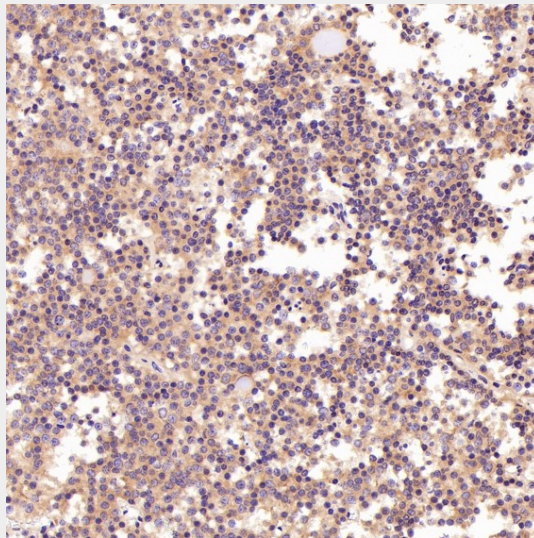


Immunohistochemical analysis of paraffin-embedded Human pituitary tumor, using the Antibody

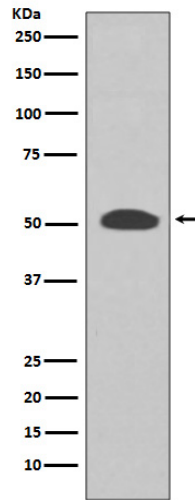
at 1:200 dilution.



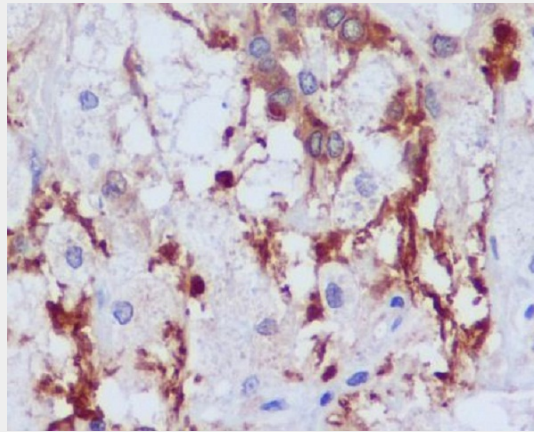
Immunohistochemical analysis of paraffin-embedded Human lung adenocarcinoma, using the Antibody at 1:200 dilution.



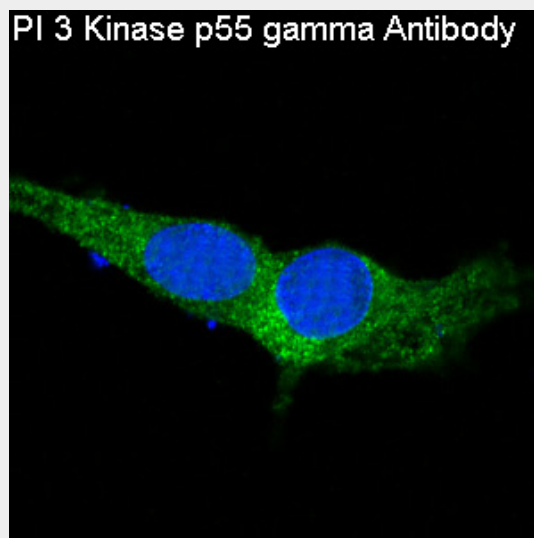
Immunohistochemical analysis of paraffin-embedded Human pituitary tumor, using the Antibody at 1:800 dilution.



Western blot analysis of PI 3 Kinase p55 gamma expression in SH-SY5Y cell lysate.



Immunohistochemical analysis of paraffin-embedded human astrocytoma, using PI 3 Kinase p55 gamma Antibody.



Immunofluorescent analysis of C6 cells, using PI 3 Kinase p55 gamma Antibody.