

Anti-Lactate Dehydrogenase LDHA Rabbit Monoclonal Antibody
Catalog # ABO14283**Specification****Anti-Lactate Dehydrogenase LDHA Rabbit Monoclonal Antibody - Product Information**

Application	WB, IHC, IF, ICC, IP, FC
Primary Accession	P00338
Host	Rabbit
Isotype	Rabbit IgG
Reactivity	Rat, Human, Mouse
Clonality	Monoclonal
Format	Liquid

Description

Anti-Lactate Dehydrogenase LDHA Rabbit Monoclonal Antibody . Tested in WB, IHC, ICC/IF, IP, Flow Cytometry applications. This antibody reacts with Human, Mouse, Rat.

Anti-Lactate Dehydrogenase LDHA Rabbit Monoclonal Antibody - Additional Information

Gene ID 3939

Other Names

L-lactate dehydrogenase A chain, LDH-A, 1.1.1.27, Cell proliferation-inducing gene 19 protein, LDH muscle subunit, LDH-M, Renal carcinoma antigen NY-REN-59, LDHA ([HGNC:6535](http://www.genenames.org/cgi-bin/gene_symbol_report?hgnc_id=6535))

Calculated MW

36689 MW KDa

Application Details

WB 1:500-1:2000
IHC 1:50-1:100
ICC/IF 1:50-1:100
IP 1:50
FC 1:50

Subcellular Localization

Cytoplasm.

Contents

Rabbit IgG in phosphate buffered saline, pH 7.4, 150mM NaCl, 0.02% sodium azide and 50% glycerol, 0.4-0.5mg/ml BSA.

Immunogen

A synthesized peptide derived from human Lactate Dehydrogenase

Purification

Affinity-chromatography

Storage

Store at -20°C for one year. For short term storage and frequent use, store at 4°C for up to one month. Avoid repeated freeze-thaw cycles.

Anti-Lactate Dehydrogenase LDHA Rabbit Monoclonal Antibody - Protein Information

Name LDHA ([HGNC:6535](#))

Function

Interconverts simultaneously and stereospecifically pyruvate and lactate with concomitant interconversion of NADH and NAD(+).

Cellular Location

Cytoplasm.

Tissue Location

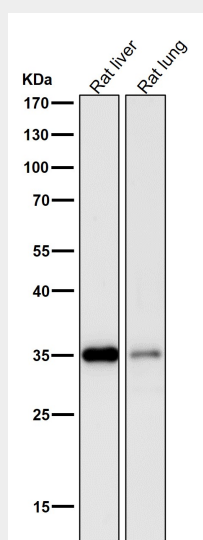
Predominantly expressed in anaerobic tissues such as skeletal muscle and liver.

Anti-Lactate Dehydrogenase LDHA Rabbit Monoclonal Antibody - Protocols

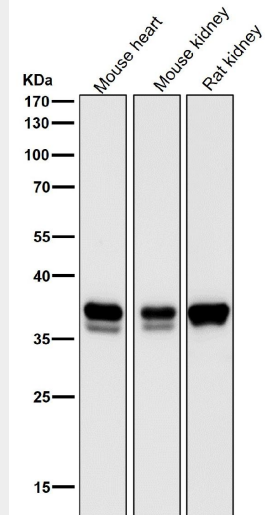
Provided below are standard protocols that you may find useful for product applications.

- [Western Blot](#)
- [Blocking Peptides](#)
- [Dot Blot](#)
- [Immunohistochemistry](#)
- [Immunofluorescence](#)
- [Immunoprecipitation](#)
- [Flow Cytometry](#)
- [Cell Culture](#)

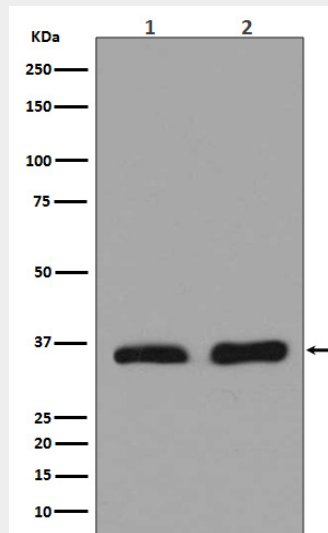
Anti-Lactate Dehydrogenase LDHA Rabbit Monoclonal Antibody - Images



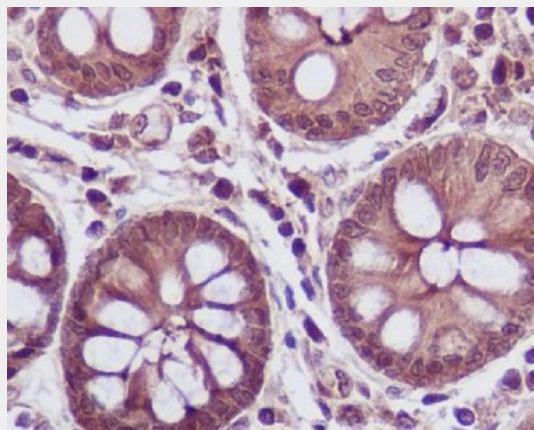
All lanes use the Antibody at 1:1K dilution for 1 hour at room temperature.



All lanes use the Antibody at 1:1K dilution for 1 hour at room temperature.



Western blot analysis of LDHA expression in (1)HeLa cell lysate;(2)Human heart lysate.



Immunohistochemical analysis of paraffin-embedded human colon, using Lactate Dehydrogenase Antibody.