

Anti-beta 2 Microglobulin B2M Rabbit Monoclonal Antibody
Catalog # ABO14270**Specification****Anti-beta 2 Microglobulin B2M Rabbit Monoclonal Antibody - Product Information**

Application	WB, IF, ICC, IP
Primary Accession	P61769
Host	Rabbit
Isotype	Rabbit IgG
Reactivity	Rat, Human, Mouse
Clonality	Monoclonal
Format	Liquid

Description

Anti-beta 2 Microglobulin Rabbit Monoclonal Antibody . Tested in WB, ICC/IF, IP applications. This antibody reacts with Human, Mouse, Rat.

Anti-beta 2 Microglobulin B2M Rabbit Monoclonal Antibody - Additional Information

Gene ID 567

Other Names

Beta-2-microglobulin, Beta-2-microglobulin form pl 5.3, B2M ([HGNC:914](http://www.genenames.org/cgi-bin/gene_symbol_report?hgnc_id=914))

Calculated MW

13715 MW KDa

Application Details

WB 1:500-1:2000
ICC/IF 1:50-1:200
IP 1:30

Subcellular Localization

Secreted. Detected in serum and urine.

Contents

Rabbit IgG in phosphate buffered saline, pH 7.4, 150mM NaCl, 0.02% sodium azide and 50% glycerol, 0.4-0.5mg/ml BSA.

Immunogen

A synthesized peptide derived from human beta 2 Microglobulin

Purification

Affinity-chromatography

Storage

Store at -20°C for one year. For short term storage and frequent use, store at 4°C for up to one month. Avoid repeated freeze-thaw cycles.

Anti-beta 2 Microglobulin B2M Rabbit Monoclonal Antibody - Protein Information

Name B2M ([HGNC:914](#))

Function

Component of the class I major histocompatibility complex (MHC). Involved in the presentation of peptide antigens to the immune system. Exogenously applied M.tuberculosis EsxA or EsxA-EsxB (or EsxA expressed in host) binds B2M and decreases its export to the cell surface (total protein levels do not change), probably leading to defects in class I antigen presentation (PubMed:25356553).

Cellular Location

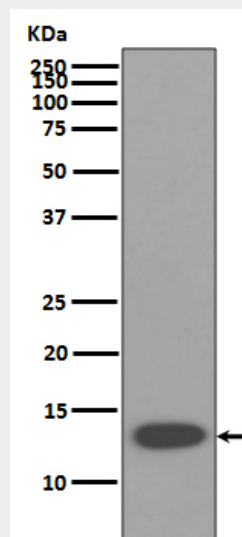
Secreted. Cell surface. Note=Detected in serum and urine (PubMed:1336137, PubMed:7554280). {ECO:0000269|PubMed:7554280, ECO:0000269|Ref.6}

Anti-beta 2 Microglobulin B2M Rabbit Monoclonal Antibody - Protocols

Provided below are standard protocols that you may find useful for product applications.

- [Western Blot](#)
- [Blocking Peptides](#)
- [Dot Blot](#)
- [Immunohistochemistry](#)
- [Immunofluorescence](#)
- [Immunoprecipitation](#)
- [Flow Cytometry](#)
- [Cell Culture](#)

Anti-beta 2 Microglobulin B2M Rabbit Monoclonal Antibody - Images



Western blot analysis of beta 2 Microglobulin expression in U937 cell lysate.