

Anti-Neutrophil Elastase ELANE Rabbit Monoclonal Antibody
Catalog # ABO14267**Specification****Anti-Neutrophil Elastase ELANE Rabbit Monoclonal Antibody - Product Information**

Application	WB, IHC, IF, ICC, FC
Primary Accession	P08246
Host	Rabbit
Isotype	Rabbit IgG
Reactivity	Human
Clonality	Monoclonal
Format	Liquid

Description

Anti-Neutrophil Elastase ELANE Rabbit Monoclonal Antibody . Tested in WB, IHC, ICC/IF, Flow Cytometry applications. This antibody reacts with Human.

Anti-Neutrophil Elastase ELANE Rabbit Monoclonal Antibody - Additional Information

Gene ID 1991

Other Names

Neutrophil elastase, 3.4.21.37, Bone marrow serine protease, Elastase-2, Human leukocyte elastase, HLE, Medullasin, PMN elastase, ELANE, ELA2

Calculated MW

28518 MW KDa

Application Details

WB 1:500-1:2000
IHC 1:100-1:500
ICC/IF 1:50-1:200
FC 1:30

Tissue Specificity

Bone marrow cells.

Contents

Rabbit IgG in phosphate buffered saline, pH 7.4, 150mM NaCl, 0.02% sodium azide and 50% glycerol, 0.4-0.5mg/ml BSA.

Immunogen

A synthesized peptide derived from human Neutrophil Elastase

Purification

Affinity-chromatography

Storage

Store at -20°C for one year. For short term storage and frequent use, store at 4°C for up to one month. Avoid repeated freeze-thaw cycles.

Anti-Neutrophil Elastase ELANE Rabbit Monoclonal Antibody - Protein Information

Name ELANE

Synonyms ELA2

Function

Serine protease that modifies the functions of natural killer cells, monocytes and granulocytes. Inhibits C5a-dependent neutrophil enzyme release and chemotaxis (PubMed:[15140022](http://www.uniprot.org/citations/15140022)). Promotes cleavage of GSDMB, thereby inhibiting pyroptosis (PubMed:[36899106](http://www.uniprot.org/citations/36899106)). Capable of killing E.coli but not S.aureus in vitro; digests outer membrane protein A (ompA) in E.coli and K.pneumoniae (PubMed:[10947984](http://www.uniprot.org/citations/10947984)).

Cellular Location

Cytoplasmic vesicle, phagosome. Note=Localized in phagolysosomes following ingestion of E.coli by neutrophils

Tissue Location

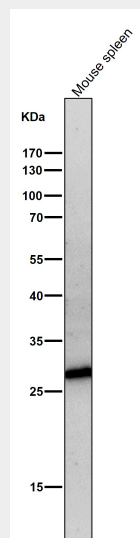
Bone marrow cells. Neutrophil (PubMed:10947984).

Anti-Neutrophil Elastase ELANE Rabbit Monoclonal Antibody - Protocols

Provided below are standard protocols that you may find useful for product applications.

- [Western Blot](#)
- [Blocking Peptides](#)
- [Dot Blot](#)
- [Immunohistochemistry](#)
- [Immunofluorescence](#)
- [Immunoprecipitation](#)
- [Flow Cytometry](#)
- [Cell Culture](#)

Anti-Neutrophil Elastase ELANE Rabbit Monoclonal Antibody - Images



All lanes use the Antibody at 1:5K dilution for 1 hour at room temperature.

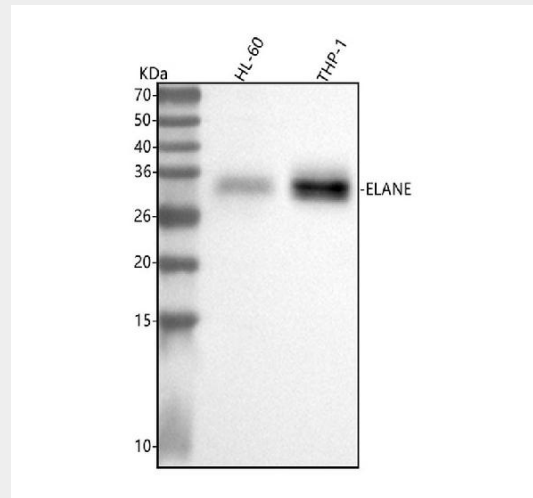


Figure 1. Western blot analysis of Neutrophil Elastase using anti-Neutrophil Elastase antibody (M01607).

Electrophoresis was performed on a 5-20% SDS-PAGE gel at 70V (Stacking gel) / 90V (Resolving gel) for 2-3 hours. The sample well of each lane was loaded with 30 ug of sample under reducing conditions.

Lane 1: human HL-60 whole cell lysates,

Lane 2: human THP-1 whole cell lysates.

After electrophoresis, proteins were transferred to a nitrocellulose membrane at 150 mA for 50-90 minutes. Blocked the membrane with 5% non-fat milk/TBS for 1.5 hour at RT. The membrane was incubated with rabbit anti-Neutrophil Elastase antigen affinity purified monoclonal antibody (Catalog # M01607) at 1:500 overnight at 4°C, then washed with TBS-0.1%Tween 3 times with 5 minutes each and probed with a goat anti-rabbit IgG-HRP secondary antibody at a dilution of 1:500 for 1.5 hour at RT. The signal is developed using an Enhanced Chemiluminescent detection (ECL) kit (Catalog # EK1002) with Tanon 5200 system. A specific band was detected for Neutrophil Elastase at approximately 29 kDa. The expected band size for Neutrophil Elastase is at 29 kDa.