

Anti-C Reactive Protein CRP Rabbit Monoclonal Antibody
Catalog # ABO14252

Specification

Anti-C Reactive Protein CRP Rabbit Monoclonal Antibody - Product Information

Application	WB, IHC, IP
Primary Accession	P02741
Host	Rabbit
Isotype	Rabbit IgG
Reactivity	Human
Clonality	Monoclonal
Format	Liquid

Description

Anti-C Reactive Protein CRP Rabbit Monoclonal Antibody . Tested in WB, IHC, IP applications. This antibody reacts with Human.

Anti-C Reactive Protein CRP Rabbit Monoclonal Antibody - Additional Information

Gene ID 1401

Other Names

C-reactive protein, C-reactive protein(1-205), CRP, PTX1

Calculated MW

25039 MW KDa

Application Details

WB 1:1000-1:2000
IHC 1:500-1:1000
IP 1:50

Subcellular Localization

Secreted.

Tissue Specificity

Found in plasma.

Contents

Rabbit IgG in phosphate buffered saline, pH 7.4, 150mM NaCl, 0.02% sodium azide and 50% glycerol, 0.4-0.5mg/ml BSA.

Immunogen

A synthesized peptide derived from human C Reactive Protein

Purification

Affinity-chromatography

Storage

Store at -20°C for one year. For short term storage and frequent use, store at 4°C for up to one month. Avoid repeated freeze-thaw cycles.

Anti-C Reactive Protein CRP Rabbit Monoclonal Antibody - Protein Information

Name CRP

Synonyms PTX1

Function

Displays several functions associated with host defense: it promotes agglutination, bacterial capsular swelling, phagocytosis and complement fixation through its calcium-dependent binding to phosphorylcholine. Can interact with DNA and histones and may scavenge nuclear material released from damaged circulating cells.

Cellular Location

Secreted.

Tissue Location

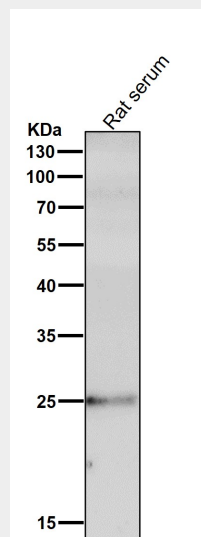
Found in plasma.

Anti-C Reactive Protein CRP Rabbit Monoclonal Antibody - Protocols

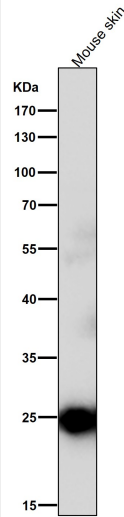
Provided below are standard protocols that you may find useful for product applications.

- [Western Blot](#)
- [Blocking Peptides](#)
- [Dot Blot](#)
- [Immunohistochemistry](#)
- [Immunofluorescence](#)
- [Immunoprecipitation](#)
- [Flow Cytometry](#)
- [Cell Culture](#)

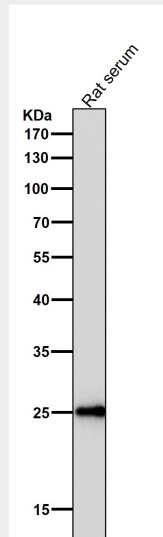
Anti-C Reactive Protein CRP Rabbit Monoclonal Antibody - Images



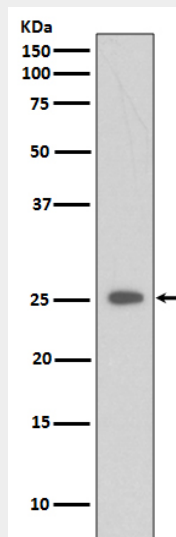
All lanes use the Antibody at 1:2K dilution for 1 hour at room temperature.



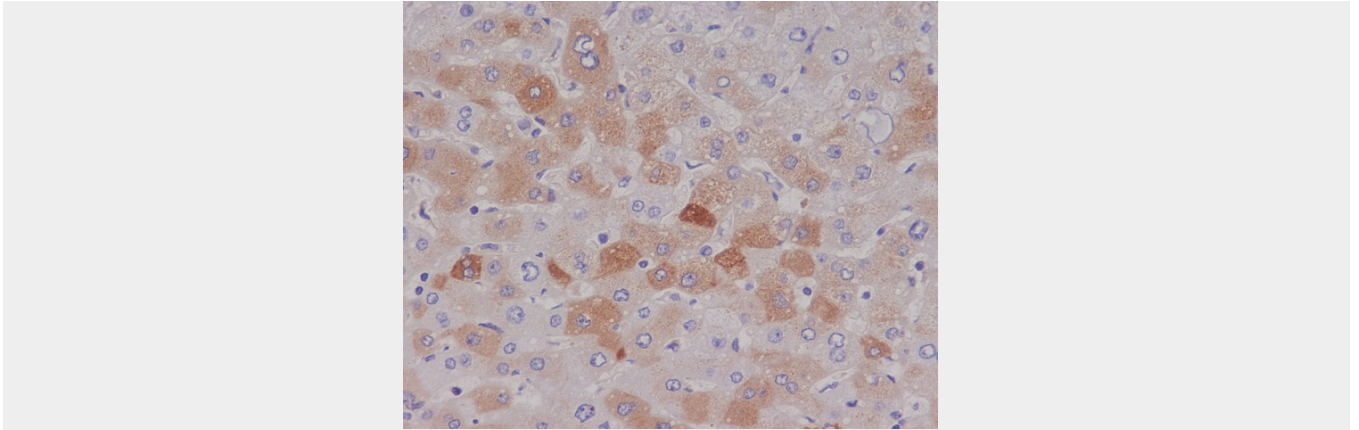
All lanes use the Antibody at 1:1K dilution for 1 hour at room temperature.



All lanes use the Antibody at 1:1K dilution for 1 hour at room temperature.



Western blot analysis of CRP expression in Etoposide treated 293 whole cell lysates.



Immunohistochemical analysis of paraffin-embedded human liver, using C Reactive Protein Antibody.