

Anti-gamma Sarcoglycan Rabbit Monoclonal Antibody
Catalog # ABO14248**Specification****Anti-gamma Sarcoglycan Rabbit Monoclonal Antibody - Product Information**

Application	WB, IHC, IP
Primary Accession	Q13326
Host	Rabbit
Isotype	Rabbit IgG
Reactivity	Human
Clonality	Monoclonal
Format	Liquid

Description

Anti-gamma Sarcoglycan Rabbit Monoclonal Antibody . Tested in WB, IHC, IP applications. This antibody reacts with Human.

Anti-gamma Sarcoglycan Rabbit Monoclonal Antibody - Additional Information

Gene ID 6445

Other Names

Gamma-sarcoglycan, Gamma-SG, 35 kDa dystrophin-associated glycoprotein, 35DAG, SGCG

Calculated MW

32379 MW KDa

Application Details

WB 1:500-1:2000
IHC 1:50-1:200
IP 1:50

Subcellular Localization

Cell membrane, sarcolemma ; Single-pass type II membrane protein. Cytoplasm, cytoskeleton.

Tissue Specificity

Expressed in skeletal and heart muscle.

Contents

Rabbit IgG in phosphate buffered saline, pH 7.4, 150mM NaCl, 0.02% sodium azide and 50% glycerol, 0.4-0.5mg/ml BSA.

Immunogen

A synthesized peptide derived from human gamma Sarcoglycan

Purification

Affinity-chromatography

Storage

Store at -20°C for one year. For short term storage and frequent use, store at 4°C for up to one month. Avoid repeated freeze-thaw cycles.

Anti-gamma Sarcoglycan Rabbit Monoclonal Antibody - Protein Information

Name SGCG

Function

Component of the sarcoglycan complex, a subcomplex of the dystrophin-glycoprotein complex which forms a link between the F-actin cytoskeleton and the extracellular matrix.

Cellular Location

Cell membrane, sarcolemma; Single-pass type II membrane protein. Cytoplasm, cytoskeleton

Tissue Location

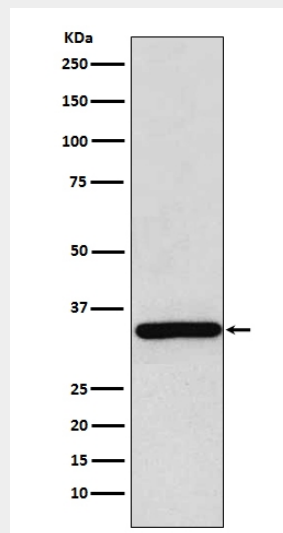
Expressed in skeletal and heart muscle.

Anti-gamma Sarcoglycan Rabbit Monoclonal Antibody - Protocols

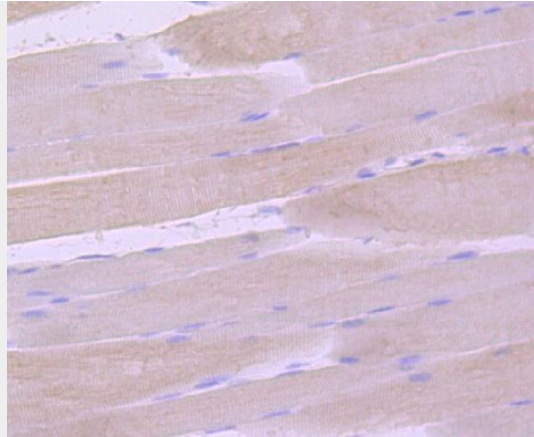
Provided below are standard protocols that you may find useful for product applications.

- [Western Blot](#)
- [Blocking Peptides](#)
- [Dot Blot](#)
- [Immunohistochemistry](#)
- [Immunofluorescence](#)
- [Immunoprecipitation](#)
- [Flow Cytometry](#)
- [Cell Culture](#)

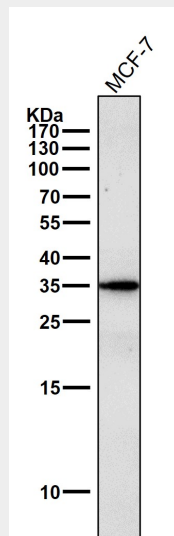
Anti-gamma Sarcoglycan Rabbit Monoclonal Antibody - Images



Western blot analysis of gamma Sarcoglycan expression in Human skeletal muscle lysate.



Immunohistochemical analysis of paraffin-embedded mouse skeletal muscle tissue using anti-gamma Sarcoglycan antibody. The section was pre-treated using heat mediated antigen retrieval with Tris-EDTA buffer (pH 8.0-8.4) for 20 minutes. The tissues were blocked in 5% BSA for 30 minutes at room temperature, washed with ddH₂O and PBS, and then probed with the primary antibody (1/100) for 30 minutes at room temperature. The detection was performed using an HRP conjugated compact polymer system. DAB was used as the chromogen. Tissues were counterstained with hematoxylin and mounted with DPX.



All lanes use the Antibody at 1:2K dilution for 1 hour at room temperature.