

Anti-cleaved Caspase-9 CASP9 Rabbit Monoclonal Antibody
Catalog # ABO14242**Specification****Anti-cleaved Caspase-9 CASP9 Rabbit Monoclonal Antibody - Product Information**

Application	WB, IP
Primary Accession	P55211
Host	Rabbit
Isotype	Rabbit IgG
Reactivity	Human, Mouse
Clonality	Monoclonal
Format	Liquid

Description

Anti-cleaved Caspase-9 CASP9 Rabbit Monoclonal Antibody . Tested in WB, IP applications. This antibody reacts with Human, Mouse.

Anti-cleaved Caspase-9 CASP9 Rabbit Monoclonal Antibody - Additional Information

Gene ID 842

Other Names

Caspase-9, CASP-9, 3.4.22.62, Apoptotic protease Mch-6, Apoptotic protease-activating factor 3, APAF-3, ICE-like apoptotic protease 6, ICE-LAP6, Caspase-9 subunit p35, Caspase-9 subunit p10, CASP9, MCH6

Calculated MW

46281 MW KDa

Application Details

WB 1:500-1:2000
IP 1:50

Tissue Specificity

Ubiquitous, with highest expression in the heart, moderate expression in liver, skeletal muscle, and pancreas. Low levels in all other tissues. Within the heart, specifically expressed in myocytes..

Contents

Rabbit IgG in phosphate buffered saline, pH 7.4, 150mM NaCl, 0.02% sodium azide and 50% glycerol, 0.4-0.5mg/ml BSA.

Immunogen

A synthesized peptide derived from human cleaved Caspase-9

Purification

Affinity-chromatography

Storage

Store at -20°C for one year. For short term storage and frequent use, store at 4°C for up to one month. Avoid repeated freeze-thaw cycles.

Anti-cleaved Caspase-9 CASP9 Rabbit Monoclonal Antibody - Protein Information

Name CASP9

Synonyms MCH6

Function

Involved in the activation cascade of caspases responsible for apoptosis execution. Binding of caspase-9 to Apaf-1 leads to activation of the protease which then cleaves and activates effector caspases caspase-3 (CASP3) or caspase-7 (CASP7). Promotes DNA damage- induced apoptosis in a ABL1/c-Abl-dependent manner. Proteolytically cleaves poly(ADP-ribose) polymerase (PARP). Cleaves BIRC6 following inhibition of BIRC6-caspase binding by DIABLO/SMAC (PubMed:36758105, PubMed:36758106).

Tissue Location

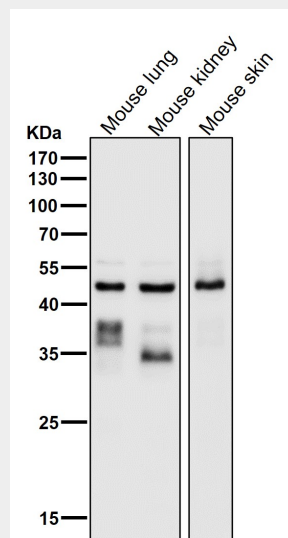
Ubiquitous, with highest expression in the heart, moderate expression in liver, skeletal muscle, and pancreas. Low levels in all other tissues. Within the heart, specifically expressed in myocytes.

Anti-cleaved Caspase-9 CASP9 Rabbit Monoclonal Antibody - Protocols

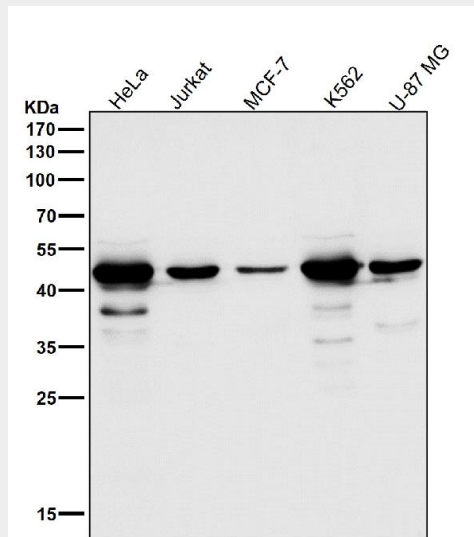
Provided below are standard protocols that you may find useful for product applications.

- [Western Blot](#)
- [Blocking Peptides](#)
- [Dot Blot](#)
- [Immunohistochemistry](#)
- [Immunofluorescence](#)
- [Immunoprecipitation](#)
- [Flow Cytometry](#)
- [Cell Culture](#)

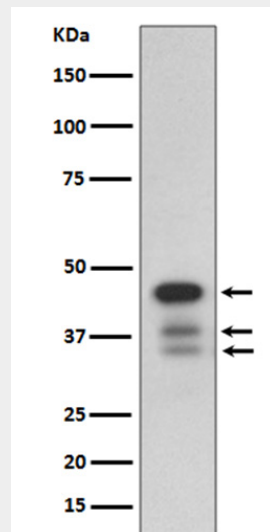
Anti-cleaved Caspase-9 CASP9 Rabbit Monoclonal Antibody - Images



All lanes use the Antibody at 1:1K dilution for 1 hour at room temperature.



All lanes use the Antibody at 1:1K dilution for 1 hour at room temperature.



Western blot analysis of cleaved Caspase-9 Antibody expression in HeLa cell lysate treated with staurosporine.