

Anti-ATP citrate lyase ACLY Rabbit Monoclonal Antibody
Catalog # ABO14239

Specification

Anti-ATP citrate lyase ACLY Rabbit Monoclonal Antibody - Product Information

Application	WB, IHC, IF, ICC, IP, FC
Primary Accession	P53396
Host	Rabbit
Isotype	Rabbit IgG
Reactivity	Rat, Human, Mouse
Clonality	Monoclonal
Format	Liquid

Description

Anti-ATP citrate lyase ACLY Rabbit Monoclonal Antibody . Tested in WB, IHC, ICC/IF, IP, Flow Cytometry applications. This antibody reacts with Human, Mouse, Rat.

Anti-ATP citrate lyase ACLY Rabbit Monoclonal Antibody - Additional Information

Gene ID 47

Other Names

ATP-citrate synthase, 2.3.3.8, ATP-citrate (pro-S-)-lyase, ACL, Citrate cleavage enzyme, ACLY

Calculated MW

120839 MW KDa

Application Details

WB 1:1000-1:10000
IHC 1:50-1:200
ICC/IF 1:50-1:200
IP 1:50
FC 1:50

Subcellular Localization

Cytoplasm.

Contents

Rabbit IgG in phosphate buffered saline, pH 7.4, 150mM NaCl, 0.02% sodium azide and 50% glycerol, 0.4-0.5mg/ml BSA.

Immunogen

A synthesized peptide derived from human ATP citrate lyase

Purification

Affinity-chromatography

Storage

Store at -20°C for one year. For short term storage and frequent use, store at 4°C for up to one month. Avoid repeated freeze-thaw cycles.

Anti-ATP citrate lyase ACLY Rabbit Monoclonal Antibody - Protein Information

Name ACLY

Function

Catalyzes the cleavage of citrate into oxaloacetate and acetyl-CoA, the latter serving as common substrate for de novo cholesterol and fatty acid synthesis.

Cellular Location

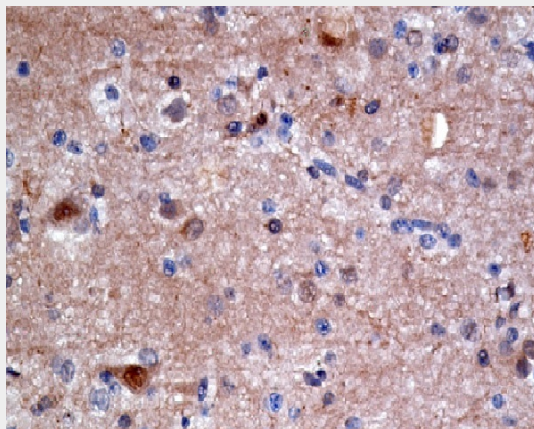
Cytoplasm, cytosol.

Anti-ATP citrate lyase ACLY Rabbit Monoclonal Antibody - Protocols

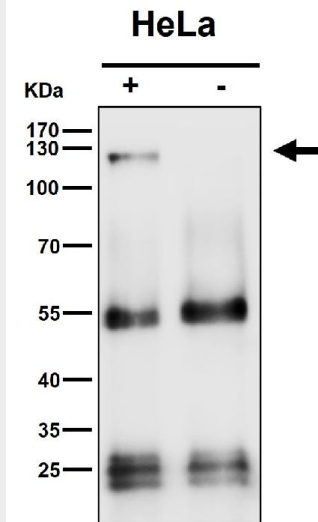
Provided below are standard protocols that you may find useful for product applications.

- [Western Blot](#)
- [Blocking Peptides](#)
- [Dot Blot](#)
- [Immunohistochemistry](#)
- [Immunofluorescence](#)
- [Immunoprecipitation](#)
- [Flow Cytometry](#)
- [Cell Culture](#)

Anti-ATP citrate lyase ACLY Rabbit Monoclonal Antibody - Images



Immunohistochemical analysis of paraffin-embedded human brain carcinoma, using ATP citrate lyase Antibody .



Immunoprecipitate (IP) analysis using the Antibody at 1:50 dilution. (wb at 1:3K dilution)

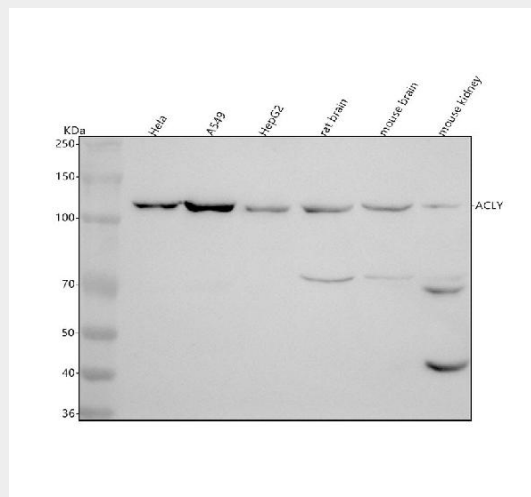


Figure 1. Western blot analysis of ACLY using anti-ACLY antibody (M02372). Electrophoresis was performed on a 5-20% SDS-PAGE gel at 70V (Stacking gel) / 90V (Resolving gel) for 2-3 hours. The sample well of each lane was loaded with 30 ug of sample under reducing conditions.

- Lane 1: human Hela whole cell lysates,
- Lane 2: human A549 whole cell lysates,
- Lane 3: human HepG2 whole cell lysates,
- Lane 4: rat brain tissue lysates,
- Lane 5: mouse brain tissue lysates,
- Lane 6: mouse kidney tissue lysates.

After electrophoresis, proteins were transferred to a nitrocellulose membrane at 150 mA for 50-90 minutes. Blocked the membrane with 5% non-fat milk/TBS for 1.5 hour at RT. The membrane was incubated with rabbit anti-ACLY antigen affinity purified monoclonal antibody (Catalog # M02372) at 1:1000 overnight at 4°C, then washed with TBS-0.1%Tween 3 times with 5 minutes each and probed with a goat anti-rabbit IgG-HRP secondary antibody at a dilution of 1:5000 for 1.5 hour at RT. The signal is developed using an Enhanced Chemiluminescent detection (ECL) kit (Catalog # EK1002) with Tanon 5200 system. A specific band was detected for ACLY at approximately 121 kDa. The expected band size for ACLY is at 121 kDa.