

Anti-Integrin alpha 5 ITGA5 Rabbit Monoclonal Antibody
Catalog # ABO14229**Specification****Anti-Integrin alpha 5 ITGA5 Rabbit Monoclonal Antibody - Product Information**

Application	WB, IHC, IF, ICC, IP, FC
Primary Accession	P08648
Host	Rabbit
Isotype	Rabbit IgG
Reactivity	Rat, Human, Mouse
Clonality	Monoclonal
Format	Liquid

Description

Anti-Integrin alpha 5 ITGA5 Rabbit Monoclonal Antibody . Tested in WB, IHC, ICC/IF, IP, Flow Cytometry applications. This antibody reacts with Human, Mouse, Rat.

Anti-Integrin alpha 5 ITGA5 Rabbit Monoclonal Antibody - Additional Information

Gene ID 3678

Other Names

Integrin alpha-5, CD49 antigen-like family member E, Fibronectin receptor subunit alpha, Integrin alpha-F, VLA-5, CD49e, Integrin alpha-5 heavy chain, Integrin alpha-5 light chain, ITGA5 (http://www.genenames.org/cgi-bin/gene_symbol_report?hgnc_id=6141), FNRA

Calculated MW

114536 MW KDa

Application Details

WB 1:1000-1:2000
IHC 1:50-1:200
ICC/IF 1:50-1:200
IP 1:50
FC 1:50

Subcellular Localization

Membrane; Single-pass type I membrane protein.

Contents

Rabbit IgG in phosphate buffered saline, pH 7.4, 150mM NaCl, 0.02% sodium azide and 50% glycerol, 0.4-0.5mg/ml BSA.

Immunogen

A synthesized peptide derived from human Integrin alpha 5

Purification

Affinity-chromatography

Storage

Store at -20°C for one year. For short term storage and frequent use, store at 4°C for up to one month. Avoid repeated freeze-thaw cycles.

Anti-Integrin alpha 5 ITGA5 Rabbit Monoclonal Antibody - Protein Information

Name ITGA5 ([HGNC:6141](#))

Synonyms FNRA

Function

Integrin alpha-5/beta-1 (ITGA5:ITGB1) is a receptor for fibronectin and fibrinogen. It recognizes the sequence R-G-D in its ligands. ITGA5:ITGB1 binds to PLA2G2A via a site (site 2) which is distinct from the classical ligand-binding site (site 1) and this induces integrin conformational changes and enhanced ligand binding to site 1 (PubMed:[18635536](http://www.uniprot.org/citations/18635536)), PubMed:[25398877](http://www.uniprot.org/citations/25398877)). ITGA5:ITGB1 acts as a receptor for fibrillin-1 (FBN1) and mediates R-G-D-dependent cell adhesion to FBN1 (PubMed:[12807887](http://www.uniprot.org/citations/12807887)), PubMed:[17158881](http://www.uniprot.org/citations/17158881)). ITGA5:ITGB1 acts as a receptor for fibronectin (FN1) and mediates R-G-D-dependent cell adhesion to FN1 (PubMed:[33962943](http://www.uniprot.org/citations/33962943)). ITGA5:ITGB1 is a receptor for IL1B and binding is essential for IL1B signaling (PubMed:[29030430](http://www.uniprot.org/citations/29030430)). ITGA5:ITGB3 is a receptor for soluble CD40LG and is required for CD40/CD40LG signaling (PubMed:[31331973](http://www.uniprot.org/citations/31331973)).

Cellular Location

Cell membrane; Single-pass type I membrane protein. Cell junction, focal adhesion

Tissue Location

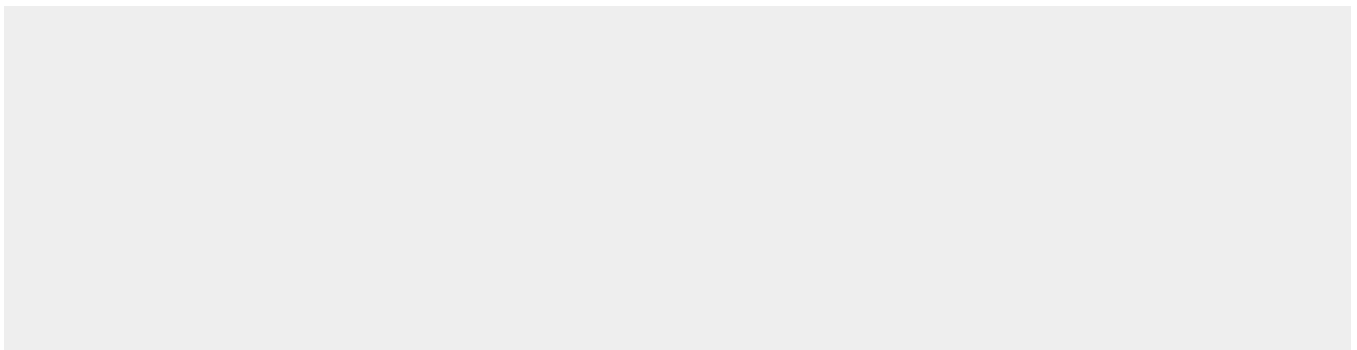
Expressed in placenta (at protein level).

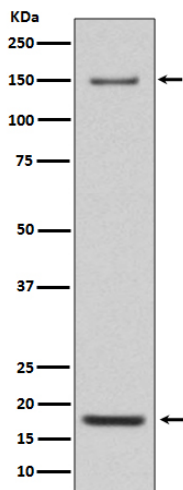
Anti-Integrin alpha 5 ITGA5 Rabbit Monoclonal Antibody - Protocols

Provided below are standard protocols that you may find useful for product applications.

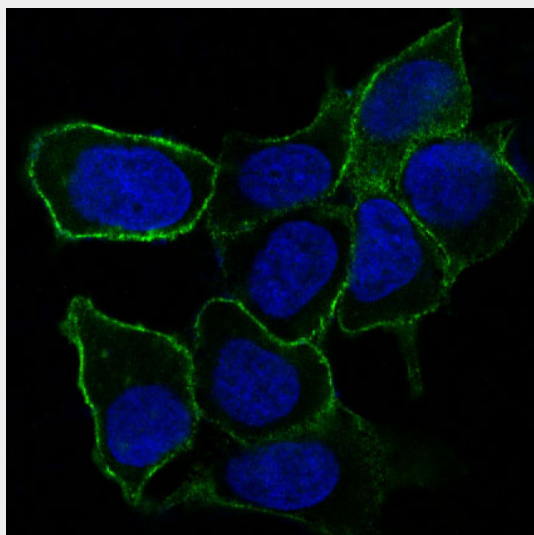
- [Western Blot](#)
- [Blocking Peptides](#)
- [Dot Blot](#)
- [Immunohistochemistry](#)
- [Immunofluorescence](#)
- [Immunoprecipitation](#)
- [Flow Cytometry](#)
- [Cell Culture](#)

Anti-Integrin alpha 5 ITGA5 Rabbit Monoclonal Antibody - Images





Western blot analysis of Integrin alpha 5 expression in Mouse heart lysate.



Immunofluorescent analysis of MCF-7 cells, using Integrin alpha 5 Antibody.