

## Anti-Integrin alpha 2 ITGA2 Rabbit Monoclonal Antibody Catalog # ABO14227

### Specification

---

#### Anti-Integrin alpha 2 ITGA2 Rabbit Monoclonal Antibody - Product Information

Application	WB, IHC, IF, ICC, IP, FC
Primary Accession	<a href="#">P17301</a>
Host	Rabbit
Isotype	Rabbit IgG
Reactivity	Rat, Human, Mouse
Clonality	Monoclonal
Format	Liquid

#### Description

Anti-Integrin alpha 2 ITGA2 Rabbit Monoclonal Antibody . Tested in WB, IHC, ICC/IF, IP, Flow Cytometry applications. This antibody reacts with Human, Mouse, Rat.

#### Anti-Integrin alpha 2 ITGA2 Rabbit Monoclonal Antibody - Additional Information

Gene ID 3673

#### Other Names

Integrin alpha-2, CD49 antigen-like family member B, Collagen receptor, Platelet membrane glycoprotein Ia, GPIa, VLA-2 subunit alpha, CD49b, ITGA2, CD49B

#### Calculated MW

129295 MW KDa

#### Application Details

WB 1:1000-1:2000<br>IHC 1:50-1:200<br>ICC/IF 1:50-1:200<br>IP 1:100<br>FC 1:100

#### Subcellular Localization

Membrane; Single-pass type I membrane protein.

#### Contents

Rabbit IgG in phosphate buffered saline, pH 7.4, 150mM NaCl, 0.02% sodium azide and 50% glycerol, 0.4-0.5mg/ml BSA.

#### Immunogen

A synthesized peptide derived from human Integrin alpha 2

#### Purification

Affinity-chromatography

Storage

Store at -20°C for one year. For short term storage and frequent use, store at 4°C for up to one month. Avoid repeated freeze-thaw cycles.

#### Anti-Integrin alpha 2 ITGA2 Rabbit Monoclonal Antibody - Protein Information

**Name** ITGA2

**Synonyms** CD49B

**Function**

Integrin alpha-2/beta-1 is a receptor for laminin, collagen, collagen C-propeptides, fibronectin and E-cadherin. It recognizes the proline-hydroxylated sequence G-F-P-G-E-R in collagen. It is responsible for adhesion of platelets and other cells to collagens, modulation of collagen and collagenase gene expression, force generation and organization of newly synthesized extracellular matrix. (Microbial infection) Integrin ITGA2:ITGB1 acts as a receptor for Human echoviruses 1 and 8.

**Cellular Location**

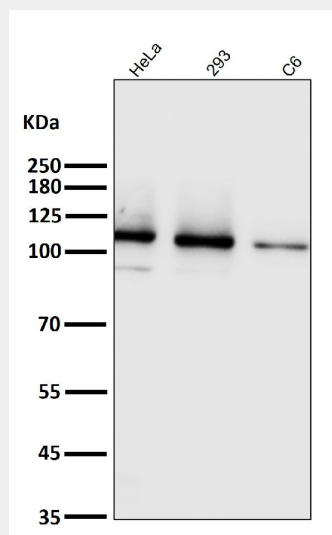
Membrane; Single-pass type I membrane protein.

**Anti-Integrin alpha 2 ITGA2 Rabbit Monoclonal Antibody - Protocols**

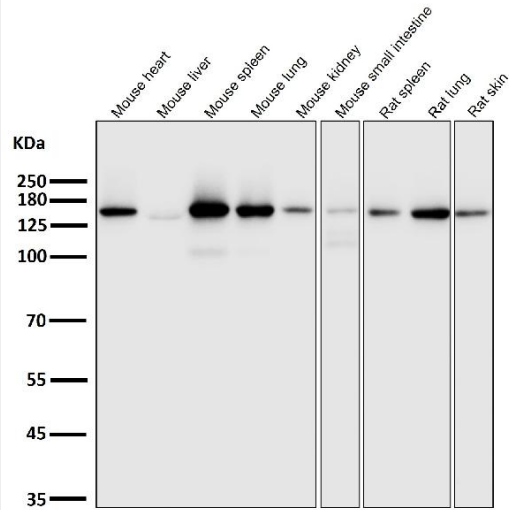
Provided below are standard protocols that you may find useful for product applications.

- [Western Blot](#)
- [Blocking Peptides](#)
- [Dot Blot](#)
- [Immunohistochemistry](#)
- [Immunofluorescence](#)
- [Immunoprecipitation](#)
- [Flow Cytometry](#)
- [Cell Culture](#)

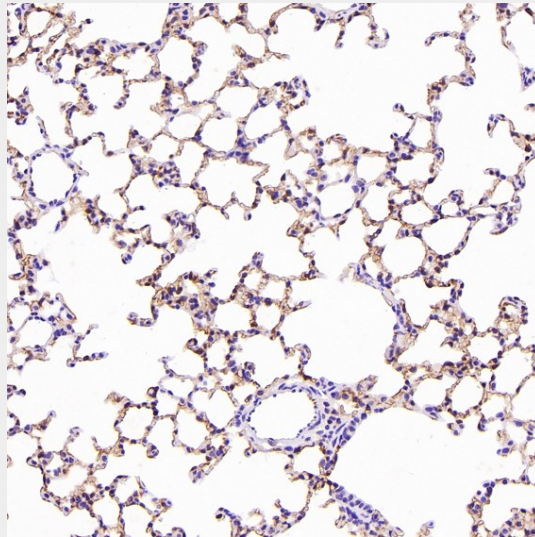
**Anti-Integrin alpha 2 ITGA2 Rabbit Monoclonal Antibody - Images**



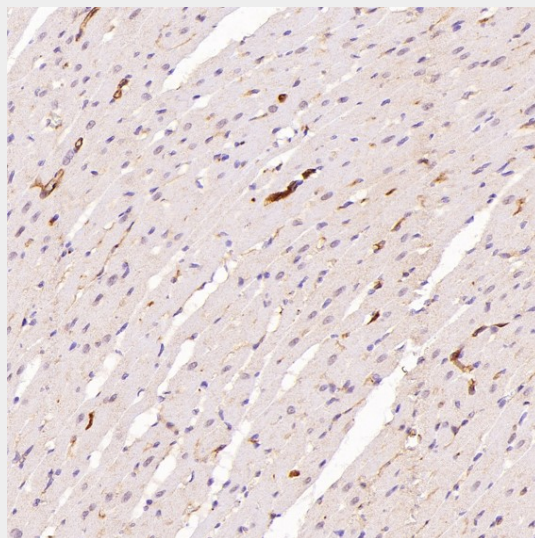
All lanes use the Antibody at 1:3W dilution for 1 hour at room temperature.



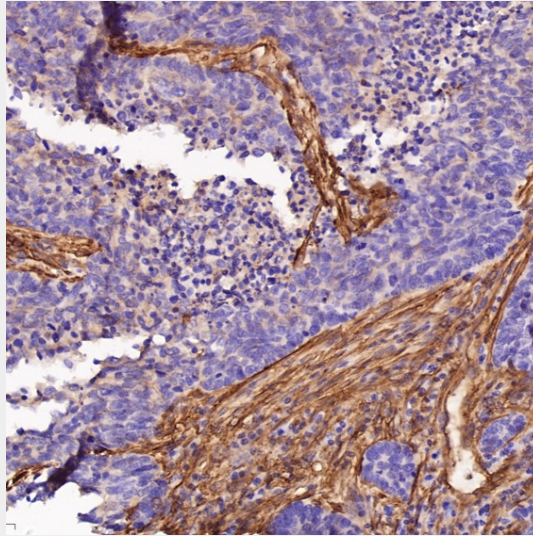
All lanes use the Antibody at 1:3W dilution for 1 hour at room temperature.



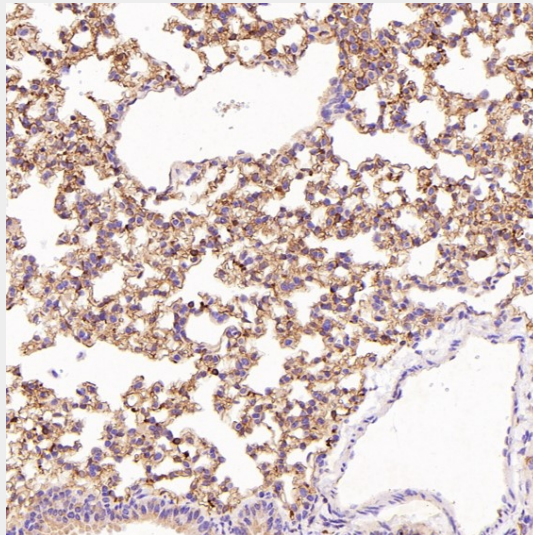
Immunohistochemical analysis of paraffin-embedded Rat liver, using the Antibody at 1:200 dilution.



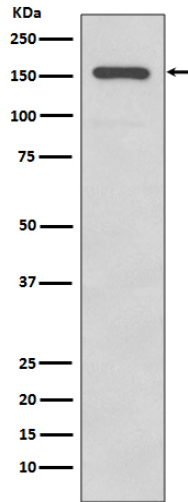
Immunohistochemical analysis of paraffin-embedded Rat heart, using the Antibody at 1:200 dilution.



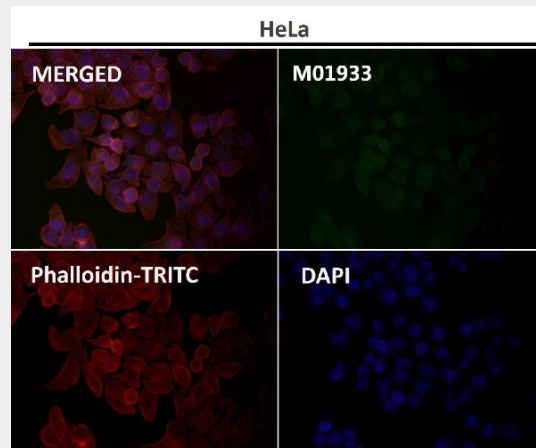
Immunohistochemical analysis of paraffin-embedded Human lung large cell cancer, using the Antibody at 1:500 dilution.



Immunohistochemical analysis of paraffin-embedded Mouse lung, using the Antibody at 1:200 dilution.



Western blot analysis of Integrin alpha 2 expression in A431 cell lysate.



Immunofluorescent analysis using the Antibody at 1:50 dilution.