

Anti-Lamin B Receptor LBR Rabbit Monoclonal Antibody Catalog # ABO14225

Specification

Anti-Lamin B Receptor LBR Rabbit Monoclonal Antibody - Product Information

Application	WB, IHC, IF, ICC, IP
Primary Accession	Q14739
Host	Rabbit
Isotype	Rabbit IgG
Reactivity	Rat, Human
Clonality	Monoclonal
Format	Liquid

Description

Anti-Lamin B Receptor LBR Rabbit Monoclonal Antibody . Tested in WB, IHC, ICC/IF, IP applications. This antibody reacts with Human, Rat.

Anti-Lamin B Receptor LBR Rabbit Monoclonal Antibody - Additional Information

Gene ID 3930

Other Names

Delta(14)-sterol reductase LBR, Delta-14-SR, 1.3.1.70, 3-beta-hydroxysterol Delta (14)-reductase, C-14 sterol reductase, C14SR, Integral nuclear envelope inner membrane protein, LMN2R, Lamin-B receptor, Sterol C14-reductase, LBR

Calculated MW

70703 MW KDa

Application Details

WB 1:500-1:2000
IHC 1:50-1:200
ICC/IF 1:100-1:500
IP 1:30

Subcellular Localization

Nucleus inner membrane; Multi-pass membrane protein.

Contents

Rabbit IgG in phosphate buffered saline, pH 7.4, 150mM NaCl, 0.02% sodium azide and 50% glycerol, 0.4-0.5mg/ml BSA.

Immunogen

A synthesized peptide derived from human Lamin B Receptor

Purification

Affinity-chromatography

Storage

Store at -20°C for one year. For short term storage and frequent use, store at 4°C for up to one month. Avoid repeated freeze-thaw cycles.

Anti-Lamin B Receptor LBR Rabbit Monoclonal Antibody - Protein Information

Name LBR

Function

Catalyzes the reduction of the C14-unsaturated bond of lanosterol, as part of the metabolic pathway leading to cholesterol biosynthesis (PubMed:12618959, PubMed:16784888, PubMed:21327084, PubMed:27336722, PubMed:9630650). Plays a critical role in myeloid cell cholesterol biosynthesis which is essential to both myeloid cell growth and functional maturation (By similarity). Mediates the activation of NADPH oxidases, perhaps by maintaining critical levels of cholesterol required for membrane lipid raft formation during neutrophil differentiation (By similarity). Anchors the lamina and the heterochromatin to the inner nuclear membrane (PubMed:10828963).

Cellular Location

Nucleus inner membrane; Multi-pass membrane protein. Endoplasmic reticulum membrane. Cytoplasm Nucleus. Note=Nucleus; nuclear rim

Tissue Location

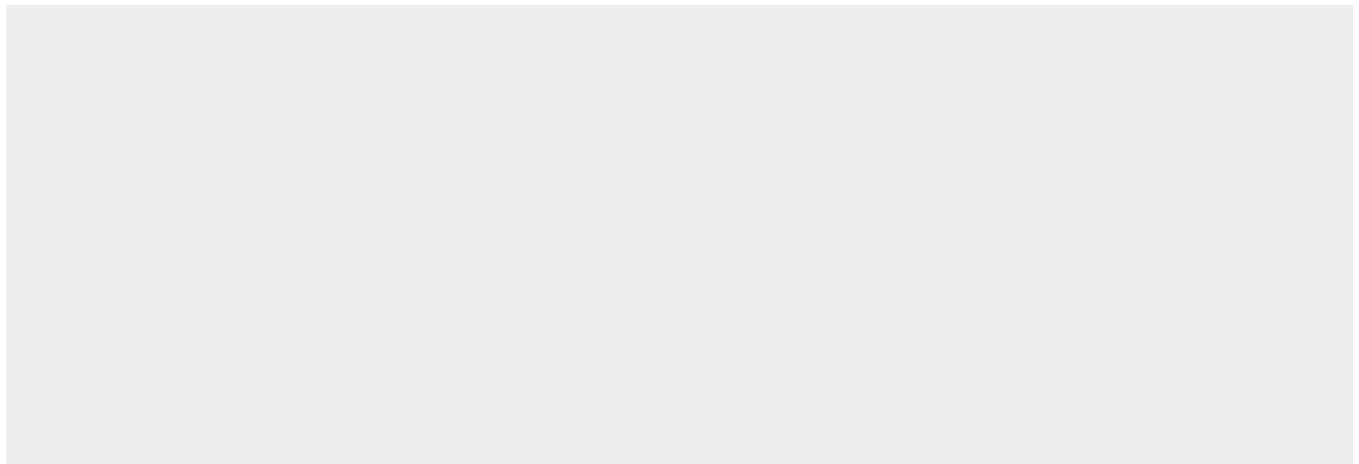
Expressed in the bone marrow, liver, heart, adrenal gland, lung, placenta and uterus (PubMed:16784888). Expressed in osteoclasts and osteoblast-like cells (PubMed:21327084)

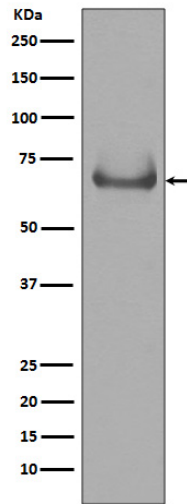
Anti-Lamin B Receptor LBR Rabbit Monoclonal Antibody - Protocols

Provided below are standard protocols that you may find useful for product applications.

- [Western Blot](#)
- [Blocking Peptides](#)
- [Dot Blot](#)
- [Immunohistochemistry](#)
- [Immunofluorescence](#)
- [Immunoprecipitation](#)
- [Flow Cytometry](#)
- [Cell Culture](#)

Anti-Lamin B Receptor LBR Rabbit Monoclonal Antibody - Images





Western blot analysis of Lamin B Receptor expression in Jurkat cell lysate.