

Anti-Interferon beta Rabbit Monoclonal Antibody
Catalog # ABO14214**Specification****Anti-Interferon beta Rabbit Monoclonal Antibody - Product Information**

Application	WB, IP
Primary Accession	P01574
Host	Rabbit
Isotype	Rabbit IgG
Reactivity	Human
Clonality	Monoclonal
Format	Liquid

Description

Anti-Interferon beta Rabbit Monoclonal Antibody . Tested in WB, IP applications. This antibody reacts with Human.

Anti-Interferon beta Rabbit Monoclonal Antibody - Additional Information

Gene ID 3456

Other Names

Interferon beta, IFN-beta, Fibroblast interferon, IFNB1 ([HGNC:5434](http://www.genenames.org/cgi-bin/gene_symbol_report?hgnc_id=5434)), IFB, IFNB

Calculated MW

22294 MW KDa

Application Details

WB 1:500-1:2000
IP 1:50

Subcellular Localization

Secreted.

Contents

Rabbit IgG in phosphate buffered saline, pH 7.4, 150mM NaCl, 0.02% sodium azide and 50% glycerol, 0.4-0.5mg/ml BSA.

Immunogen

A synthesized peptide derived from human Interferon beta

Purification

Affinity-chromatography

Storage

Store at -20°C for one year. For short term storage and frequent use, store at 4°C for up to one month. Avoid repeated freeze-thaw cycles.

Anti-Interferon beta Rabbit Monoclonal Antibody - Protein Information

Name IFNB1 ([HGNC:5434](#))

Synonyms IFB, IFNB

Function

Type I interferon cytokine that plays a key role in the innate immune response to infection, developing tumors and other inflammatory stimuli (PubMed:10049744, PubMed:10556041, PubMed:6157094, PubMed:6171735, PubMed:7665574, PubMed:8027027, PubMed:8969169). Signals via binding to high-affinity (IFNAR2) and low-affinity (IFNAR1) heterodimeric receptor, activating the canonical Jak-STAT signaling pathway resulting in transcriptional activation or repression of interferon-regulated genes that encode the effectors of the interferon response, such as antiviral proteins, regulators of cell proliferation and differentiation, and immunoregulatory proteins (PubMed:10049744, PubMed:10556041, PubMed:7665574, PubMed:8027027, PubMed:8969169). Signals mostly via binding to a IFNAR1-IFNAR2 heterodimeric receptor, but can also function with IFNAR1 alone and independently of Jak-STAT pathways (By similarity). Elicits a wide variety of responses, including antiviral and antibacterial activities, and can regulate the development of B-cells, myelopoiesis and lipopolysaccharide (LPS)- inducible production of tumor necrosis factor (By similarity). Plays a role in neuronal homeostasis by regulating dopamine turnover and protecting dopaminergic neurons: acts by promoting neuronal autophagy and alpha-synuclein clearance, thereby preventing dopaminergic neuron loss (By similarity). IFNB1 is more potent than interferon-alpha (IFN- alpha) in inducing the apoptotic and antiproliferative pathways required for control of tumor cell growth (By similarity).

Cellular Location

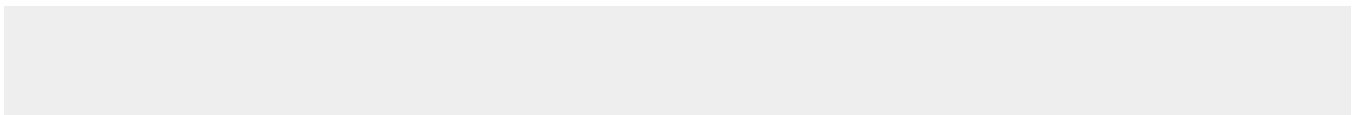
Secreted.

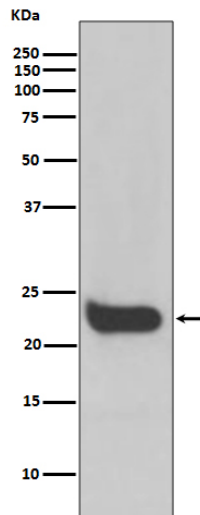
Anti-Interferon beta Rabbit Monoclonal Antibody - Protocols

Provided below are standard protocols that you may find useful for product applications.

- [Western Blot](#)
- [Blocking Peptides](#)
- [Dot Blot](#)
- [Immunohistochemistry](#)
- [Immunofluorescence](#)
- [Immunoprecipitation](#)
- [Flow Cytometry](#)
- [Cell Culture](#)

Anti-Interferon beta Rabbit Monoclonal Antibody - Images





Western blot analysis of Interferon beta expression in HeLa cell lysate.