

Anti-Angiotensinogen AGT Rabbit Monoclonal Antibody
Catalog # ABO14211**Specification****Anti-Angiotensinogen AGT Rabbit Monoclonal Antibody - Product Information**

Application	WB, IF, ICC, IP
Primary Accession	P01019
Host	Rabbit
Isotype	Rabbit IgG
Reactivity	Human
Clonality	Monoclonal
Format	Liquid

Description

Anti-Angiotensinogen AGT Rabbit Monoclonal Antibody . Tested in WB, ICC/IF, IP applications. This antibody reacts with Human.

Anti-Angiotensinogen AGT Rabbit Monoclonal Antibody - Additional Information

Gene ID 183

Other Names

Angiotensinogen, Serpin A8, Angiotensin-1, Angiotensin 1-10, Angiotensin I, Ang I, Angiotensin-2, Angiotensin 1-8, Angiotensin II, Ang II, Angiotensin-3, Angiotensin 2-8, Angiotensin III, Ang III, Des-Asp[1]-angiotensin II, Angiotensin-4, Angiotensin 3-8, Angiotensin IV, Ang IV, Angiotensin 1-9, Angiotensin 1-7, Angiotensin 1-5, Angiotensin 1-4, AGT ([HGNC:333](http://www.genenames.org/cgi-bin/gene_symbol_report?hgnc_id=333)), SERPINA8

Calculated MW

53154 MW KDa

Application Details

WB 1:1000-1:2000
ICC/IF 1:50-1:200
IP 1:50

Subcellular Localization

Secreted.

Tissue Specificity

Expressed by the liver and secreted in plasma.

Contents

Rabbit IgG in phosphate buffered saline, pH 7.4, 150mM NaCl, 0.02% sodium azide and 50% glycerol, 0.4-0.5mg/ml BSA.

Immunogen

A synthesized peptide derived from human Angiotensinogen

Purification

Affinity-chromatography

Storage

Store at -20°C for one year. For short term storage and frequent use, store at 4°C for up to one month. Avoid repeated freeze-thaw cycles.

Anti-Angiotensinogen AGT Rabbit Monoclonal Antibody - Protein Information

Name AGT ([HGNC:333](#))

Synonyms SERPINA8

Function

Essential component of the renin-angiotensin system (RAS), a potent regulator of blood pressure, body fluid and electrolyte homeostasis.

Cellular Location

Secreted

Tissue Location

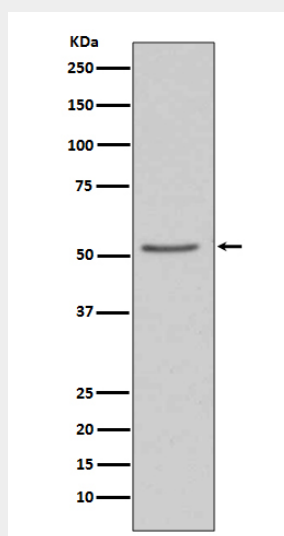
Expressed by the liver and secreted in plasma.

Anti-Angiotensinogen AGT Rabbit Monoclonal Antibody - Protocols

Provided below are standard protocols that you may find useful for product applications.

- [Western Blot](#)
- [Blocking Peptides](#)
- [Dot Blot](#)
- [Immunohistochemistry](#)
- [Immunofluorescence](#)
- [Immunoprecipitation](#)
- [Flow Cytometry](#)
- [Cell Culture](#)

Anti-Angiotensinogen AGT Rabbit Monoclonal Antibody - Images



Western blot analysis of Angiotensinogen expression in 293T cell lysate.