

**Anti-TRK fused gene TFG Rabbit Monoclonal Antibody**  
Catalog # ABO14194

**Specification**

---

**Anti-TRK fused gene TFG Rabbit Monoclonal Antibody - Product Information**

Application	WB, IHC, IF, ICC, IP
Primary Accession	<a href="#">Q92734</a>
Host	Rabbit
Isotype	Rabbit IgG
Reactivity	Rat, Human, Mouse
Clonality	Monoclonal
Format	Liquid

**Description**

Anti-TRK fused gene TFG Rabbit Monoclonal Antibody . Tested in WB, IHC, ICC/IF, IP applications. This antibody reacts with Human, Mouse, Rat.

**Anti-TRK fused gene TFG Rabbit Monoclonal Antibody - Additional Information**

**Gene ID** 10342

**Other Names**

Protein TFG, TRK-fused gene protein, TFG

**Calculated MW**

43448 MW KDa

**Application Details**

WB 1:5000-1:20000<br>IHC 1:50-1:200<br>ICC/IF 1:100-1:500<br>IP 1:50

**Tissue Specificity**

Ubiquitous.

**Contents**

Rabbit IgG in phosphate buffered saline, pH 7.4, 150mM NaCl, 0.02% sodium azide and 50% glycerol, 0.4-0.5mg/ml BSA.

**Immunogen**

A synthesized peptide derived from human TRK fused gene

**Purification**

Affinity-chromatography

**Storage**

**Store at -20°C for one year. For short term storage and frequent use, store at 4°C for up to one month. Avoid repeated freeze-thaw cycles.**

**Anti-TRK fused gene TFG Rabbit Monoclonal Antibody - Protein Information**

## Name TFG

### Function

Plays a role in the normal dynamic function of the endoplasmic reticulum (ER) and its associated microtubules (PubMed:<a href="http://www.uniprot.org/citations/23479643" target="\_blank">23479643</a>, PubMed:<a href="http://www.uniprot.org/citations/27813252" target="\_blank">27813252</a>). Required for secretory cargo traffic from the endoplasmic reticulum to the Golgi apparatus (PubMed:<a href="http://www.uniprot.org/citations/21478858" target="\_blank">21478858</a>).

### Cellular Location

Endoplasmic reticulum. Note=Localizes to endoplasmic reticulum exit site (ERES), also known as transitional endoplasmic reticulum (tER) (PubMed:21478858, PubMed:27813252).

### Tissue Location

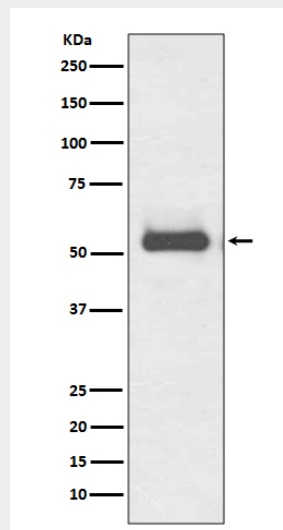
Ubiquitous.

## Anti-TRK fused gene TFG Rabbit Monoclonal Antibody - Protocols

Provided below are standard protocols that you may find useful for product applications.

- [Western Blot](#)
- [Blocking Peptides](#)
- [Dot Blot](#)
- [Immunohistochemistry](#)
- [Immunofluorescence](#)
- [Immunoprecipitation](#)
- [Flow Cytometry](#)
- [Cell Culture](#)

## Anti-TRK fused gene TFG Rabbit Monoclonal Antibody - Images



Western blot analysis of TRK fused gene expression in HeLa cell lysate.