

Anti-Cytokeratin 13 Rabbit Monoclonal Antibody Catalog # ABO14191

Specification

Anti-Cytokeratin 13 Rabbit Monoclonal Antibody - Product Information

Application	WB, IHC, IF, ICC
Primary Accession	P13646
Host	Rabbit
Isotype	Rabbit IgG
Reactivity	Human, Mouse
Clonality	Monoclonal
Format	Liquid

Description

Anti-Cytokeratin 13 Rabbit Monoclonal Antibody . Tested in WB, IHC, ICC/IF applications. This antibody reacts with Human, Mouse.

Anti-Cytokeratin 13 Rabbit Monoclonal Antibody - Additional Information

Gene ID 3860

Other Names

Keratin, type I cytoskeletal 13, Cytokeratin-13, CK-13, Keratin-13, K13, KRT13

Calculated MW

49588 MW KDa

Application Details

WB 1:50000-1:100000
IHC 1:50-1:200
ICC/IF 1:50-1:200

Tissue Specificity

Expressed in some epidermal sweat gland ducts (at protein level) and in exocervix, esophagus and placenta..

Contents

Rabbit IgG in phosphate buffered saline, pH 7.4, 150mM NaCl, 0.02% sodium azide and 50% glycerol, 0.4-0.5mg/ml BSA.

Immunogen

A synthesized peptide derived from human Cytokeratin 13

Purification

Affinity-chromatography

Storage

Store at -20°C for one year. For short term storage and frequent use, store at 4°C for up to one month. Avoid repeated freeze-thaw cycles.

Anti-Cytokeratin 13 Rabbit Monoclonal Antibody - Protein Information

Name KRT13

Function

Type 1 keratin (Probable). Maintains postnatal tongue mucosal cell homeostasis and tissue organization in response to mechanical stress, potentially via regulation of the G1/S phase cyclins CCNE1 and CCNE2 (By similarity).

Tissue Location

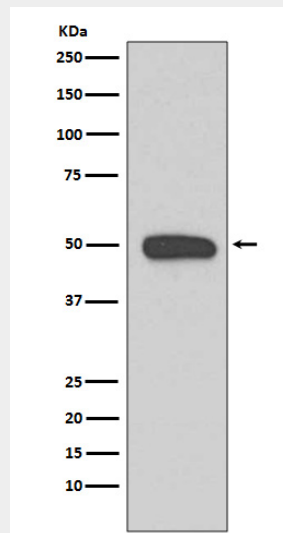
Expressed in some epidermal sweat gland ducts (at protein level) and in exocervix, esophagus and placenta

Anti-Cytokeratin 13 Rabbit Monoclonal Antibody - Protocols

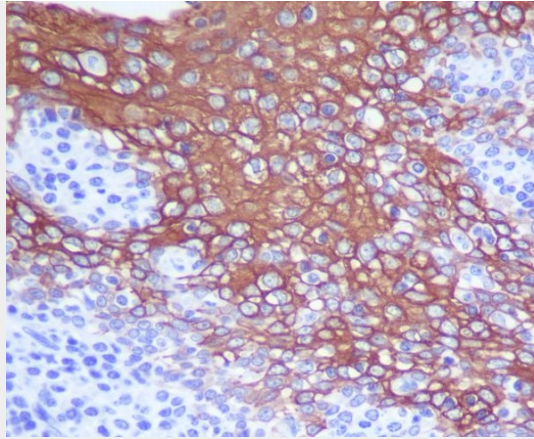
Provided below are standard protocols that you may find useful for product applications.

- [Western Blot](#)
- [Blocking Peptides](#)
- [Dot Blot](#)
- [Immunohistochemistry](#)
- [Immunofluorescence](#)
- [Immunoprecipitation](#)
- [Flow Cytometry](#)
- [Cell Culture](#)

Anti-Cytokeratin 13 Rabbit Monoclonal Antibody - Images



Western blot analysis of Cytokeratin 13 expression in A431 cell lysate.



Immunohistochemical analysis of paraffin-embedded human tonsil, using Cytokeratin 13 Antibody.