

Anti-P Glycoprotein ABCB1 Rabbit Monoclonal Antibody
Catalog # ABO14188**Specification****Anti-P Glycoprotein ABCB1 Rabbit Monoclonal Antibody - Product Information**

Application	WB, IHC
Primary Accession	P08183
Host	Rabbit
Isotype	Rabbit IgG
Reactivity	Rat, Human, Mouse
Clonality	Monoclonal
Format	Liquid

Description

Anti-P Glycoprotein ABCB1 Rabbit Monoclonal Antibody . Tested in WB, IHC applications. This antibody reacts with Human, Mouse, Rat.

Anti-P Glycoprotein ABCB1 Rabbit Monoclonal Antibody - Additional Information

Gene ID 5243

Other Names

ATP-dependent translocase ABCB1, ATP-binding cassette sub-family B member 1, Multidrug resistance protein 1, 7.6.2.2, P-glycoprotein 1, Phospholipid transporter ABCB1, 7.6.2.1, CD243, ABCB1 ([HGNC:40](http://www.genenames.org/cgi-bin/gene_symbol_report?hgnc_id=40)), MDR1, PGY1

Calculated MW

141479 MW KDa

Application Details

WB 1:500-1:2000
IHC 1:50-1:200

Subcellular Localization

Cell membrane ; Multi-pass membrane protein.

Tissue Specificity

Expressed in liver, kidney, small intestine and brain.

Contents

Rabbit IgG in phosphate buffered saline, pH 7.4, 150mM NaCl, 0.02% sodium azide and 50% glycerol, 0.4-0.5mg/ml BSA.

Immunogen

A synthesized peptide derived from human P Glycoprotein

Purification

Affinity-chromatography

Storage

Store at -20°C for one year. For short term

storage and frequent use, store at 4°C for up to one month. Avoid repeated freeze-thaw cycles.

Anti-P Glycoprotein ABCB1 Rabbit Monoclonal Antibody - Protein Information

Name ABCB1 ([HGNC:40](#))

Synonyms MDR1, PGY1

Function

Translocates drugs and phospholipids across the membrane (PubMed:2897240, PubMed:35970996, PubMed:8898203, PubMed:9038218, PubMed:35507548). Catalyzes the flop of phospholipids from the cytoplasmic to the exoplasmic leaflet of the apical membrane. Participates mainly to the flop of phosphatidylcholine, phosphatidylethanolamine, beta-D-glucosylceramides and sphingomyelins (PubMed:8898203). Energy-dependent efflux pump responsible for decreased drug accumulation in multidrug-resistant cells (PubMed:2897240, PubMed:35970996, PubMed:9038218).

Cellular Location

Cell membrane; Multi-pass membrane protein {ECO:0000255|PROSITE-ProRule:PRU00441} Apical cell membrane. Cytoplasm Note=ABCB1 localization is influenced by C1orf115 expression levels (plasma membrane versus cytoplasm). Localized to the apical membrane of enterocytes (PubMed:28408210).

Tissue Location

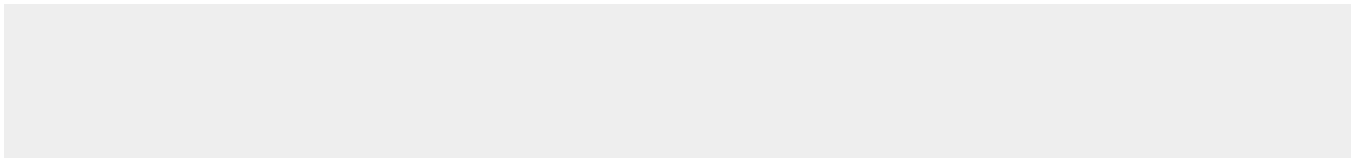
Expressed in small intestine (PubMed:28408210). Expressed in liver, kidney and brain.

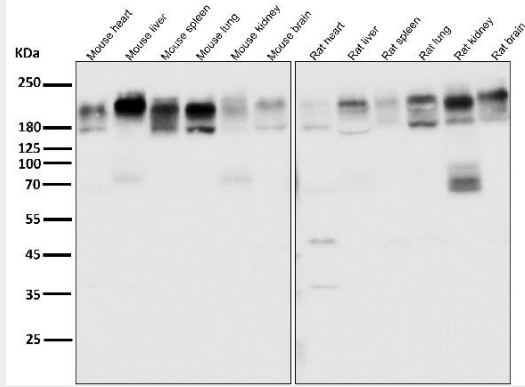
Anti-P Glycoprotein ABCB1 Rabbit Monoclonal Antibody - Protocols

Provided below are standard protocols that you may find useful for product applications.

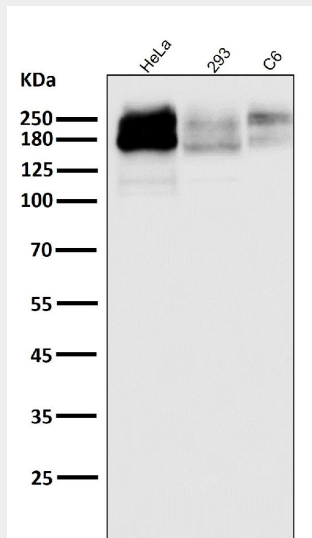
- [Western Blot](#)
- [Blocking Peptides](#)
- [Dot Blot](#)
- [Immunohistochemistry](#)
- [Immunofluorescence](#)
- [Immunoprecipitation](#)
- [Flow Cytometry](#)
- [Cell Culture](#)

Anti-P Glycoprotein ABCB1 Rabbit Monoclonal Antibody - Images

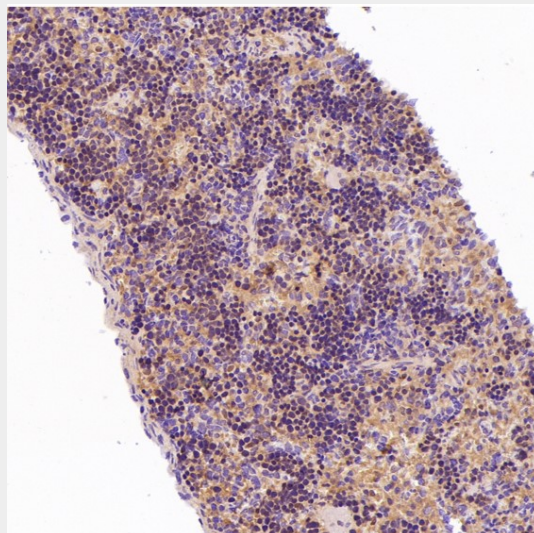




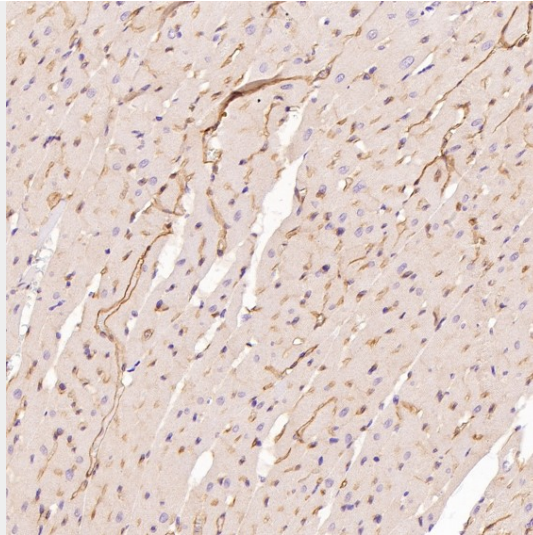
All lanes use the Antibody at 1:2K dilution for 1 hour at room temperature.



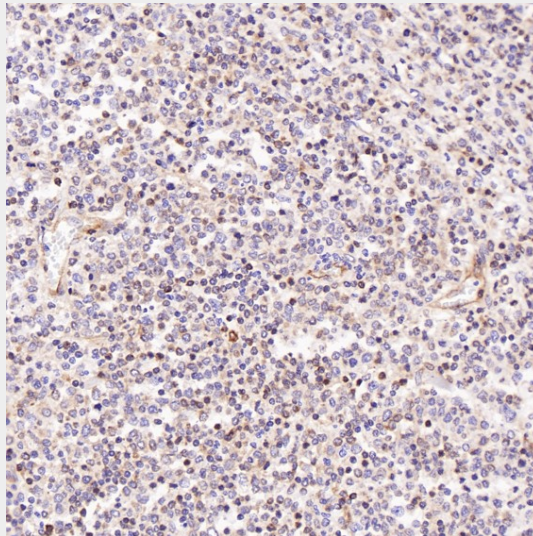
All lanes use the Antibody at 1:2K dilution for 1 hour at room temperature.



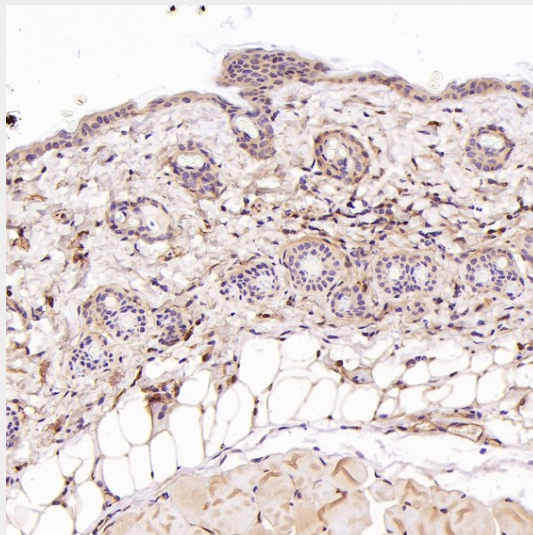
Immunohistochemical analysis of paraffin-embedded Rat spleen, using the Antibody at 1:1000 dilution.



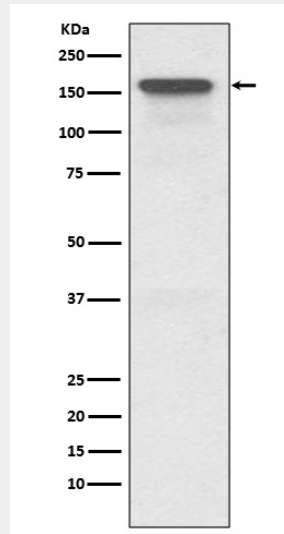
Immunohistochemical analysis of paraffin-embedded Rat heart, using the Antibody at 1:1000 dilution.



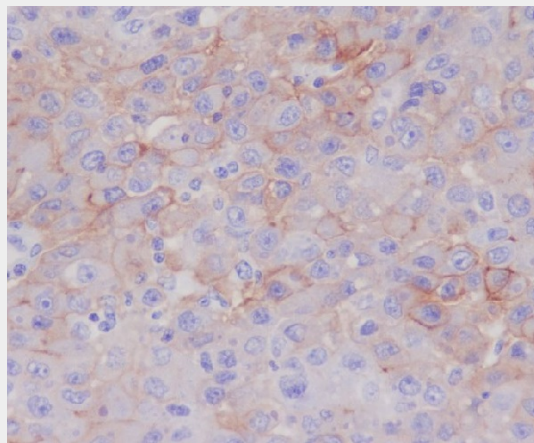
Immunohistochemical analysis of paraffin-embedded Human Hodgkin's lymphoma, using the Antibody at 1:2000 dilution.



Immunohistochemical analysis of paraffin-embedded Mouse skin, using the Antibody at 1:1000 dilution.



Western blot analysis of P Glycoprotein expression in HeLa cell lysate.



Immunohistochemical analysis of paraffin-embedded human liver, using P Glycoprotein Antibody.