

Anti-Cytokeratin 16 KRT16 Rabbit Monoclonal Antibody
Catalog # ABO14184

Specification

Anti-Cytokeratin 16 KRT16 Rabbit Monoclonal Antibody - Product Information

| | |
|-------------------|------------------------|
| Application | WB, IHC, IF, ICC, FC |
| Primary Accession | P08779 |
| Host | Rabbit |
| Isotype | Rabbit IgG |
| Reactivity | Human |
| Clonality | Monoclonal |
| Format | Liquid |

Description

Anti-Cytokeratin 16 KRT16 Rabbit Monoclonal Antibody . Tested in WB, IHC, ICC/IF, Flow Cytometry applications. This antibody reacts with Human.

Anti-Cytokeratin 16 KRT16 Rabbit Monoclonal Antibody - Additional Information

Gene ID 3868

Other Names

Keratin, type I cytoskeletal 16, Cytokeratin-16, CK-16, Keratin-16, K16, KRT16, KRT16A

Calculated MW

51268 MW KDa

Application Details

WB 1:1000-1:2000
IHC 1:50-1:200
ICC/IF 1:50-1:200
FC 1:50

Tissue Specificity

Expressed in the hair follicle, nail bed and in mucosal stratified squamous epithelia and, suprabasally, in oral epithelium and palmoplantar epidermis. Also found in luminal cells of sweat and mammary gland ducts.

Contents

Rabbit IgG in phosphate buffered saline, pH 7.4, 150mM NaCl, 0.02% sodium azide and 50% glycerol, 0.4-0.5mg/ml BSA.

Immunogen

A synthesized peptide derived from human Cytokeratin 16

Purification

Affinity-chromatography

Storage

Store at -20°C for one year. For short term storage and frequent use, store at 4°C for up to one month. Avoid repeated freeze-thaw cycles.

Anti-Cytokeratin 16 KRT16 Rabbit Monoclonal Antibody - Protein Information

Name KRT16

Synonyms KRT16A

Function

Epidermis-specific type I keratin that plays a key role in skin. Acts as a regulator of innate immunity in response to skin barrier breach: required for some inflammatory checkpoint for the skin barrier maintenance.

Tissue Location

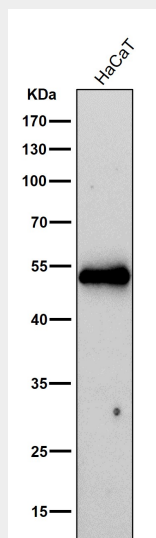
Expressed in the corneal epithelium (at protein level).

Anti-Cytokeratin 16 KRT16 Rabbit Monoclonal Antibody - Protocols

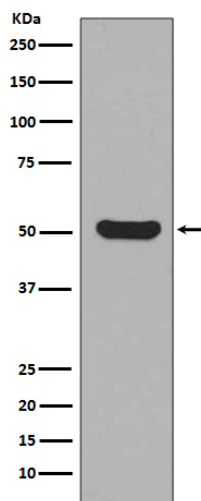
Provided below are standard protocols that you may find useful for product applications.

- [Western Blot](#)
- [Blocking Peptides](#)
- [Dot Blot](#)
- [Immunohistochemistry](#)
- [Immunofluorescence](#)
- [Immunoprecipitation](#)
- [Flow Cytometry](#)
- [Cell Culture](#)

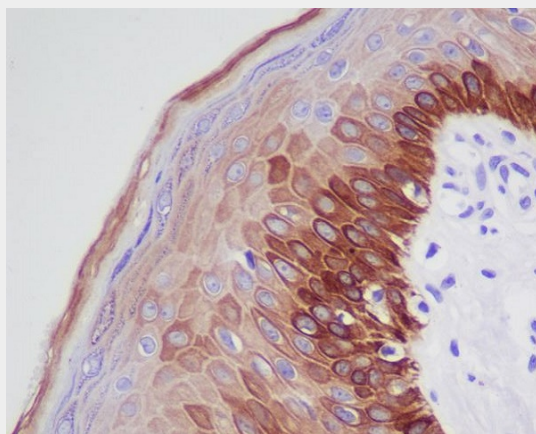
Anti-Cytokeratin 16 KRT16 Rabbit Monoclonal Antibody - Images



All lanes use the Antibody at 1:2K dilution for 1 hour at room temperature.



Western blot analysis of Cytokeratin 16 expression in HaCat cell lysate.



Immunohistochemical analysis of paraffin-embedded human skin, using Cytokeratin 16 Antibody.