

Anti-Apg12 (Atg12) Rabbit Monoclonal Antibody
Catalog # ABO14170**Specification****Anti-Apg12 (Atg12) Rabbit Monoclonal Antibody - Product Information**

Application	WB, IHC, IF, ICC
Primary Accession	O94817
Host	Rabbit
Isotype	Rabbit IgG
Reactivity	Human
Clonality	Monoclonal
Format	Liquid

Description

Anti-Apg12 (Atg12) Rabbit Monoclonal Antibody . Tested in WB, IHC, ICC/IF applications. This antibody reacts with Human.

Anti-Apg12 (Atg12) Rabbit Monoclonal Antibody - Additional Information

Gene ID 9140

Other Names

Ubiquitin-like protein ATG12, Autophagy-related protein 12, APG12-like, ATG12 ([HGNC:588](http://www.genenames.org/cgi-bin/gene_symbol_report?hgnc_id=588)), APG12, APG12L

Calculated MW

15113 MW KDa

Application Details

WB 1:1000-1:5000
IHC 1:50-1:200
ICC/IF 1:50-1:200

Subcellular Localization

Cytoplasm. Preautophagosomal structure membrane ; Peripheral membrane protein. TECPR1 recruits the ATG12-ATG5 conjugate to the autolysosomal membrane.

Tissue Specificity

Ubiquitous..

Contents

Rabbit IgG in phosphate buffered saline, pH 7.4, 150mM NaCl, 0.02% sodium azide and 50% glycerol, 0.4-0.5mg/ml BSA.

Immunogen

A synthesized peptide derived from human Apg12 (Atg12)

Purification

Affinity-chromatography

Storage

Store at -20°C for one year. For short term

storage and frequent use, store at 4°C for up to one month. Avoid repeated freeze-thaw cycles.

Anti-Apg12 (Atg12) Rabbit Monoclonal Antibody - Protein Information

Name ATG12 ([HGNC:588](#))

Synonyms APG12, APG12L

Function

Ubiquitin-like protein involved in autophagy vesicles formation. Conjugation with ATG5 through a ubiquitin-like conjugating system involving also ATG7 as an E1-like activating enzyme and ATG10 as an E2-like conjugating enzyme, is essential for its function. The ATG12-ATG5 conjugate acts as an E3-like enzyme which is required for lipidation of ATG8 family proteins and their association to the vesicle membranes. As part of the ATG8 conjugation system with ATG5 and ATG16L1, required for recruitment of LRRK2 to stressed lysosomes and induction of LRRK2 kinase activity in response to lysosomal stress (By similarity).

Cellular Location

Cytoplasm. Preautophagosomal structure membrane; Peripheral membrane protein. Note=TECPR1 recruits the ATG12- ATG5 conjugate to the autolysosomal membrane

Tissue Location

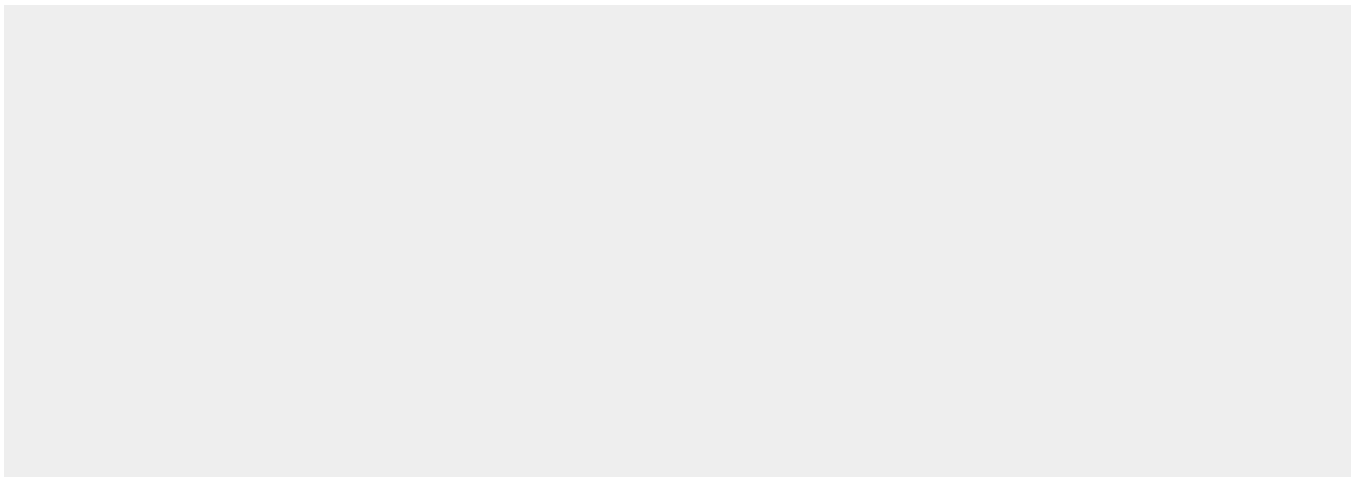
Ubiquitous..

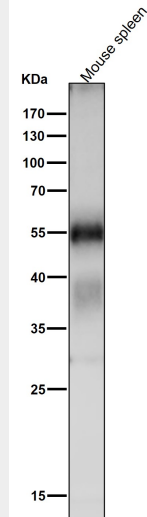
Anti-Apg12 (Atg12) Rabbit Monoclonal Antibody - Protocols

Provided below are standard protocols that you may find useful for product applications.

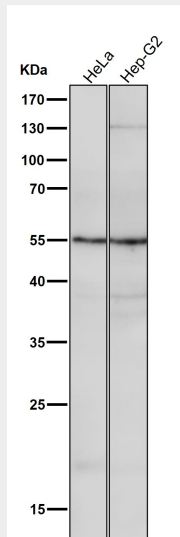
- [Western Blot](#)
- [Blocking Peptides](#)
- [Dot Blot](#)
- [Immunohistochemistry](#)
- [Immunofluorescence](#)
- [Immunoprecipitation](#)
- [Flow Cytometry](#)
- [Cell Culture](#)

Anti-Apg12 (Atg12) Rabbit Monoclonal Antibody - Images

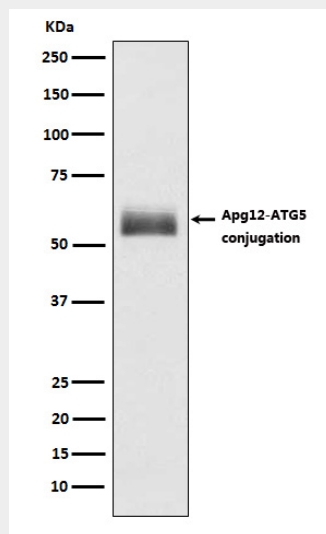




All lanes use the Antibody at 1:1K dilution for 1 hour at room temperature.



All lanes use the Antibody at 1:1K dilution for 1 hour at room temperature.



Western blot analysis of Apg12 expression in HepG2 cell lysate.