

Anti-Cytokeratin 7 KRT7 Rabbit Monoclonal Antibody
Catalog # ABO14159**Specification****Anti-Cytokeratin 7 KRT7 Rabbit Monoclonal Antibody - Product Information**

Application	WB, IHC, IF, ICC
Primary Accession	P08729
Host	Rabbit
Isotype	Rabbit IgG
Reactivity	Rat, Human, Mouse
Clonality	Monoclonal
Format	Liquid

Description

Anti-Cytokeratin 7 KRT7 Rabbit Monoclonal Antibody . Tested in WB, IHC, ICC/IF applications. This antibody reacts with Human, Mouse, Rat.

Anti-Cytokeratin 7 KRT7 Rabbit Monoclonal Antibody - Additional Information

Gene ID 3855

Other Names

Keratin, type II cytoskeletal 7, Cytokeratin-7, CK-7, Keratin-7, K7, Sarcolectin, Type-II keratin Kb7, KRT7, SCL

Calculated MW

51386 MW KDa

Application Details

WB 1:500-1:1000
IHC 1:100-1:500
ICC/IF 1:50-1:200

Subcellular Localization

Cytoplasm.

Tissue Specificity

Expressed in cultured epidermal, bronchial and mesothelial cells but absent in colon, ectocervix and liver. Observed throughout the glandular cells in the junction between stomach and esophagus but is absent in the esophagus..

Contents

Rabbit IgG in phosphate buffered saline, pH 7.4, 150mM NaCl, 0.02% sodium azide and 50% glycerol, 0.4-0.5mg/ml BSA.

Immunogen

A synthesized peptide derived from human Cytokeratin 7

Purification

Affinity-chromatography

Storage

Store at -20°C for one year. For short term

storage and frequent use, store at 4°C for up to one month. Avoid repeated freeze-thaw cycles.

Anti-Cytokeratin 7 KRT7 Rabbit Monoclonal Antibody - Protein Information

Name KRT7

Synonyms SCL

Function

Blocks interferon-dependent interphase and stimulates DNA synthesis in cells. Involved in the translational regulation of the human papillomavirus type 16 E7 mRNA (HPV16 E7).

Cellular Location

Cytoplasm.

Tissue Location

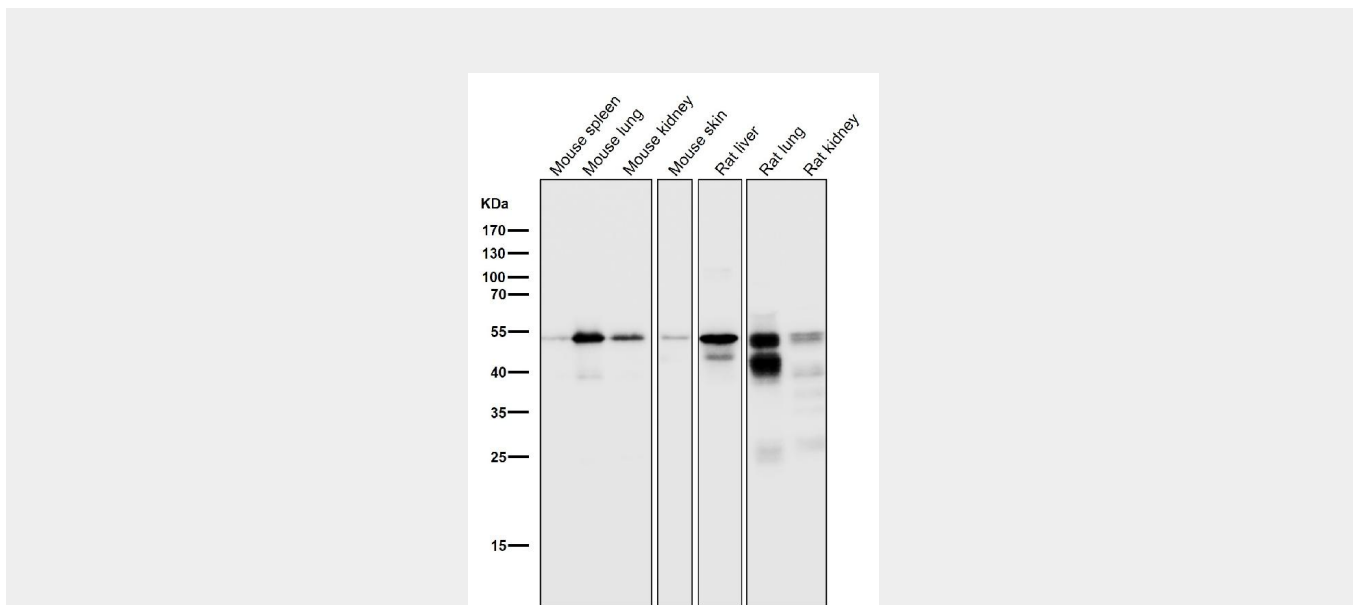
Expressed in cultured epidermal, bronchial and mesothelial cells but absent in colon, ectocervix and liver. Observed throughout the glandular cells in the junction between stomach and esophagus but is absent in the esophagus.

Anti-Cytokeratin 7 KRT7 Rabbit Monoclonal Antibody - Protocols

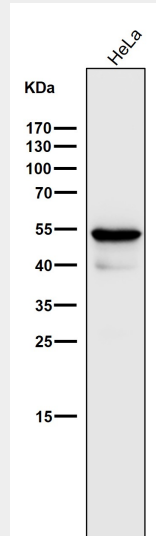
Provided below are standard protocols that you may find useful for product applications.

- [Western Blot](#)
- [Blocking Peptides](#)
- [Dot Blot](#)
- [Immunohistochemistry](#)
- [Immunofluorescence](#)
- [Immunoprecipitation](#)
- [Flow Cytometry](#)
- [Cell Culture](#)

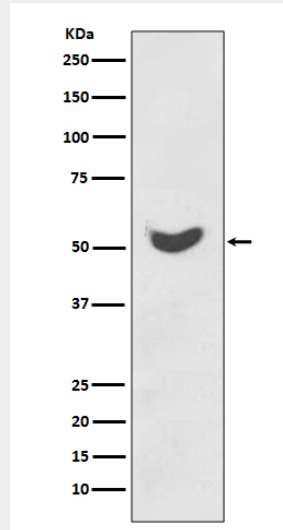
Anti-Cytokeratin 7 KRT7 Rabbit Monoclonal Antibody - Images



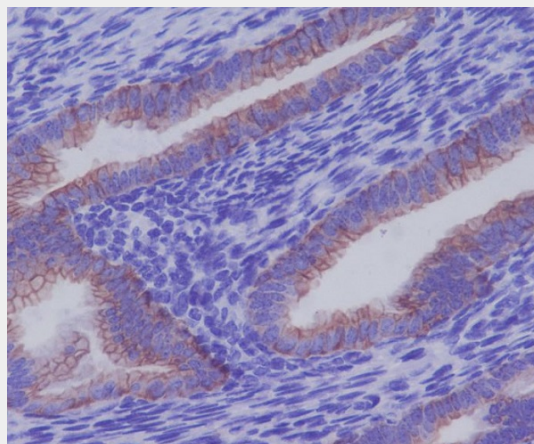
All lanes use the Antibody at 1:1W dilution for 1 hour at room temperature.



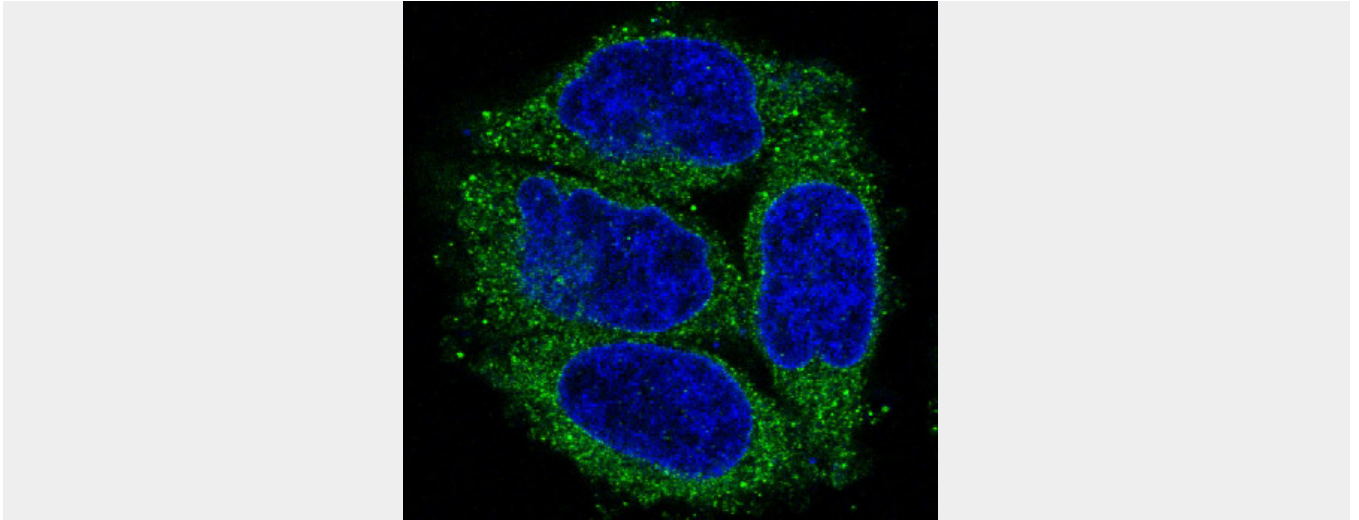
All lanes use the Antibody at 1:1W dilution for 1 hour at room temperature.



Western blot analysis of Cytokeratin 7 expression in HeLa cell lysate.



Immunohistochemical analysis of paraffin-embedded human uterus, using Cytokeratin 7 Antibody.



Immunofluorescent analysis of HeLa cells, using Cytokeratin 7 Antibody.