

**Anti-Cytokeratin 7 KRT7 Rabbit Monoclonal Antibody**  
Catalog # ABO14149**Specification****Anti-Cytokeratin 7 KRT7 Rabbit Monoclonal Antibody - Product Information**

Application	WB, IHC, IF, ICC, IP, FC
Primary Accession	<a href="#">P08729</a>
Host	Rabbit
Isotype	Rabbit IgG
Reactivity	Human
Clonality	Monoclonal
Format	Liquid

**Description**

Anti-Cytokeratin 7 KRT7 Rabbit Monoclonal Antibody . Tested in WB, IHC, ICC/IF, IP, Flow Cytometry applications. This antibody reacts with Human.

**Anti-Cytokeratin 7 KRT7 Rabbit Monoclonal Antibody - Additional Information**

**Gene ID** 3855

**Other Names**

Keratin, type II cytoskeletal 7, Cytokeratin-7, CK-7, Keratin-7, K7, Sarcolectin, Type-II keratin Kb7, KRT7, SCL

**Calculated MW**

51386 MW KDa

**Application Details**

WB 1:5000-1:10000<br>IHC 1:50-1:200<br>ICC/IF 1:50-1:200<br>IP 1:20<br>FC 1:50

**Subcellular Localization**

Cytoplasm.

**Tissue Specificity**

Expressed in cultured epidermal, bronchial and mesothelial cells but absent in colon, ectocervix and liver. Observed throughout the glandular cells in the junction between stomach and esophagus but is absent in the esophagus..

**Contents**

Rabbit IgG in phosphate buffered saline, pH 7.4, 150mM NaCl, 0.02% sodium azide and 50% glycerol, 0.4-0.5mg/ml BSA.

**Immunogen**

A synthesized peptide derived from human Cytokeratin 7

**Purification**

Affinity-chromatography

Storage

**Store at -20°C for one year. For short term**

storage and frequent use, store at 4°C for up to one month. Avoid repeated freeze-thaw cycles.

## Anti-Cytokeratin 7 KRT7 Rabbit Monoclonal Antibody - Protein Information

**Name** KRT7

**Synonyms** SCL

### Function

Blocks interferon-dependent interphase and stimulates DNA synthesis in cells. Involved in the translational regulation of the human papillomavirus type 16 E7 mRNA (HPV16 E7).

### Cellular Location

Cytoplasm.

### Tissue Location

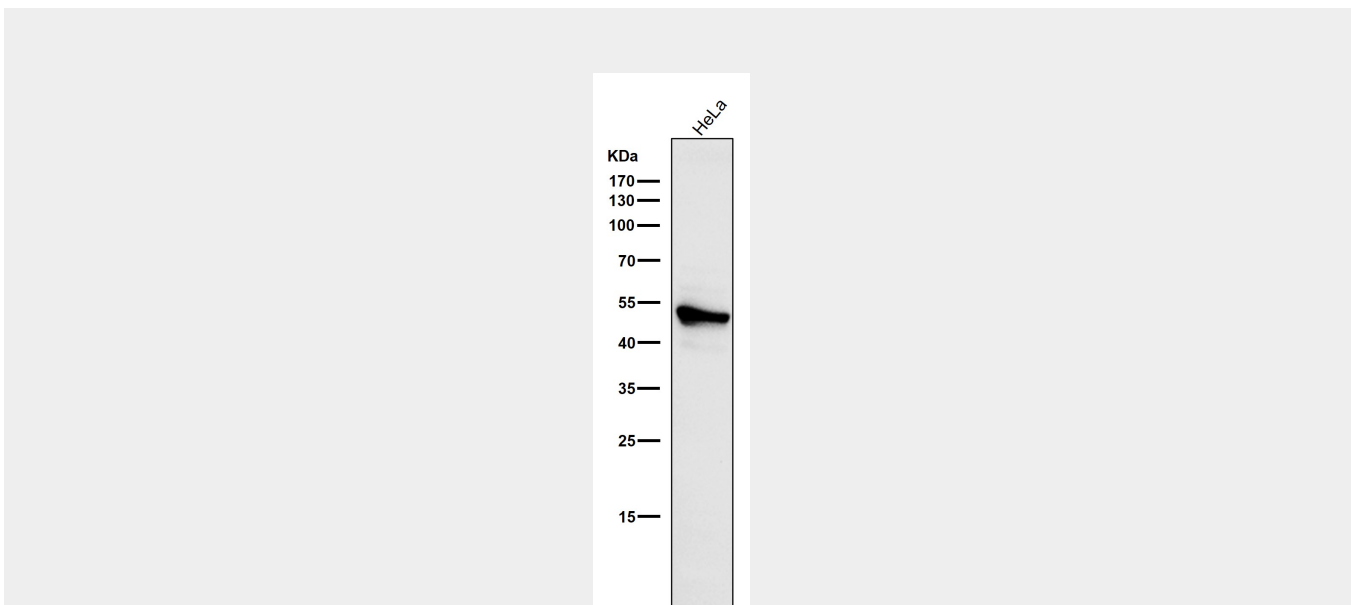
Expressed in cultured epidermal, bronchial and mesothelial cells but absent in colon, ectocervix and liver. Observed throughout the glandular cells in the junction between stomach and esophagus but is absent in the esophagus.

## Anti-Cytokeratin 7 KRT7 Rabbit Monoclonal Antibody - Protocols

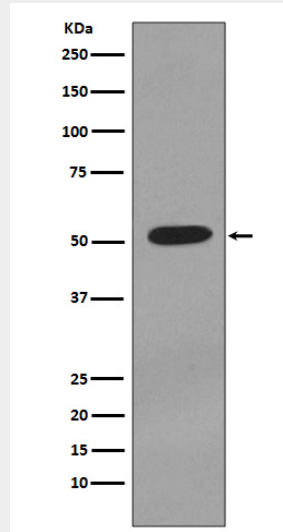
Provided below are standard protocols that you may find useful for product applications.

- [Western Blot](#)
- [Blocking Peptides](#)
- [Dot Blot](#)
- [Immunohistochemistry](#)
- [Immunofluorescence](#)
- [Immunoprecipitation](#)
- [Flow Cytometry](#)
- [Cell Culture](#)

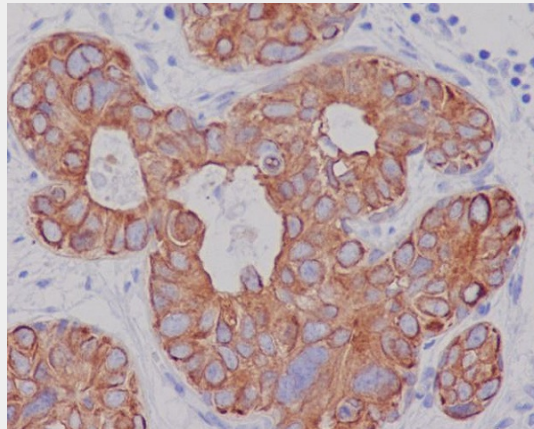
## Anti-Cytokeratin 7 KRT7 Rabbit Monoclonal Antibody - Images



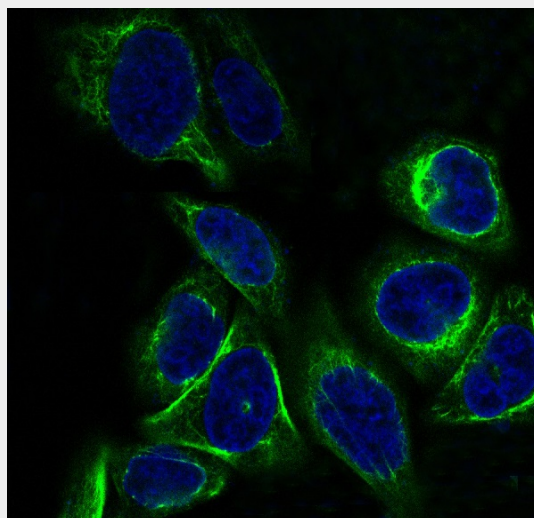
All lanes use the Antibody at 1:1W dilution for 1 hour at room temperature.



Western blot analysis of Cytokeratin 7 expression in T47 D cell lysate.



Immunohistochemical analysis of paraffin-embedded human breast carcinoma, using Cytokeratin 7 Antibody.



Immunofluorescent analysis of HeLa cells, using Cytokeratin 7 Antibody.