

**Anti-Tubulin gamma Rabbit Monoclonal Antibody**  
Catalog # ABO14145**Specification****Anti-Tubulin gamma Rabbit Monoclonal Antibody - Product Information**

Application	WB, IHC, IF, ICC, IP, FC
Primary Accession	<a href="#">P23258</a>
Host	Rabbit
Isotype	Rabbit IgG
Reactivity	Rat, Human, Mouse, Zebrafish, Monkey
Clonality	Monoclonal
Format	Liquid

**Description**

Anti-Tubulin gamma Rabbit Monoclonal Antibody . Tested in WB, IHC, ICC/IF, IP, Flow Cytometry applications. This antibody reacts with Human, Monkey, Mouse, Rat, Zebrafish.

**Anti-Tubulin gamma Rabbit Monoclonal Antibody - Additional Information**

**Gene ID** 7283

**Other Names**

Tubulin gamma-1 chain, Gamma-1-tubulin, Gamma-tubulin complex component 1, GCP-1, TUBG1 ([http://www.genenames.org/cgi-bin/gene\\_symbol\\_report?hgnc\\_id=12417](http://www.genenames.org/cgi-bin/gene_symbol_report?hgnc_id=12417)), TUBG

**Calculated MW**

51170 MW KDa

**Application Details**

WB 1:500-1:2000<br>IHC 1:50-1:200<br>ICC/IF 1:50-1:200<br>IP 1:50<br>FC 1:50

**Subcellular Localization**

Cytoplasm, cytoskeleton, microtubule organizing center, centrosome.

**Contents**

Rabbit IgG in phosphate buffered saline, pH 7.4, 150mM NaCl, 0.02% sodium azide and 50% glycerol, 0.4-0.5mg/ml BSA.

**Immunogen**

A synthesized peptide derived from human Tubulin gamma

**Purification**

Affinity-chromatography

**Storage**

**Store at -20°C for one year. For short term storage and frequent use, store at 4°C for up to one month. Avoid repeated freeze-thaw cycles.**

## Anti-Tubulin gamma Rabbit Monoclonal Antibody - Protein Information

Name TUBG1 ([HGNC:12417](#))

Synonyms TUBG

### Function

Tubulin is the major constituent of microtubules. The gamma chain is found at microtubule organizing centers (MTOC) such as the spindle poles or the centrosome. Pericentriolar matrix component that regulates alpha/beta chain minus-end nucleation, centrosome duplication and spindle formation.

### Cellular Location

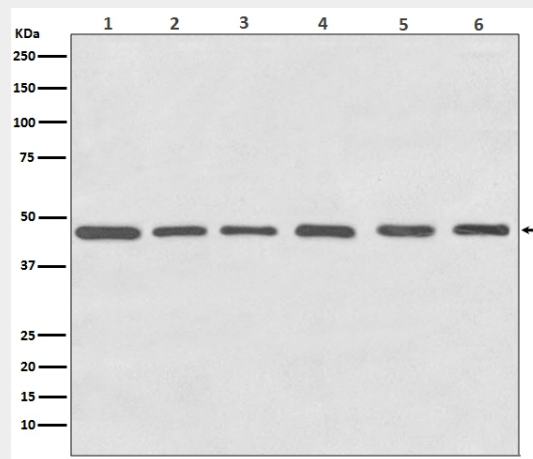
Cytoplasm, cytoskeleton, microtubule organizing center, centrosome. Cytoplasm, cytoskeleton, spindle. Note=Localizes to mitotic spindle microtubules.

## Anti-Tubulin gamma Rabbit Monoclonal Antibody - Protocols

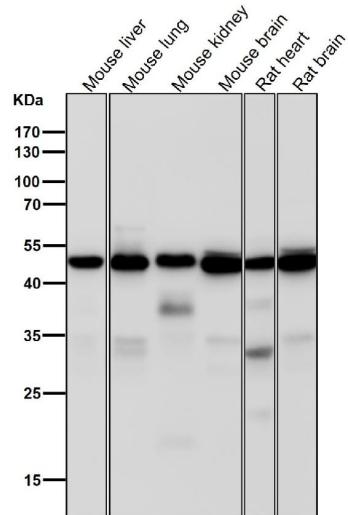
Provided below are standard protocols that you may find useful for product applications.

- [Western Blot](#)
- [Blocking Peptides](#)
- [Dot Blot](#)
- [Immunohistochemistry](#)
- [Immunofluorescence](#)
- [Immunoprecipitation](#)
- [Flow Cytometry](#)
- [Cell Culture](#)

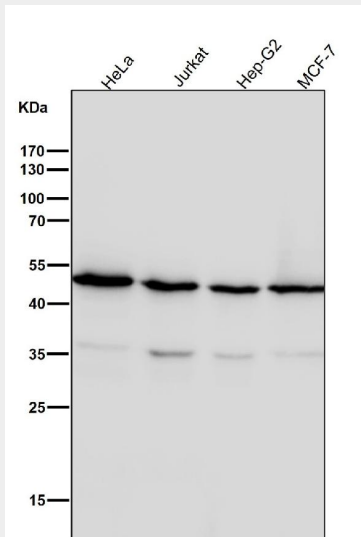
## Anti-Tubulin gamma Rabbit Monoclonal Antibody - Images



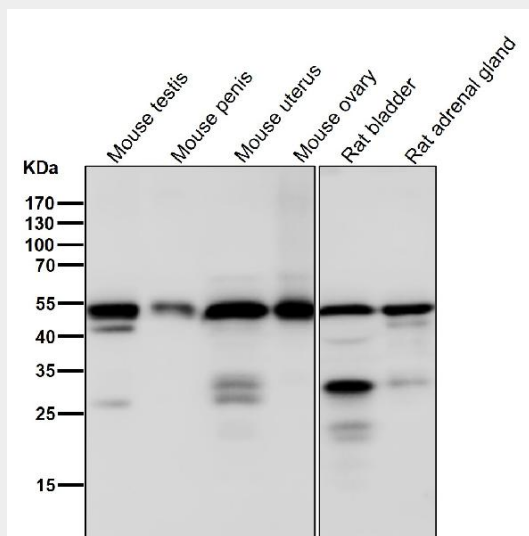
Western blot analysis of Tubulin gamma expression in (1) HeLa cell lysate; (2) NIH 3T3 cell lysate; (3) C6 cell lysate; (4) Zebrafish lysates; (5) COS-1 cell lysate; (6) MDCK cell lysate.



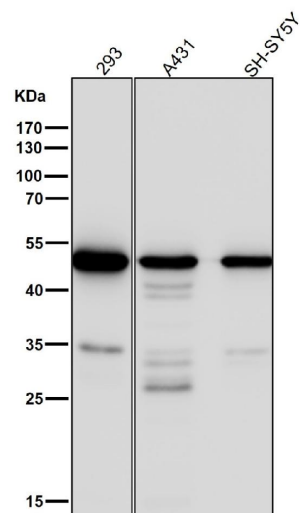
All lanes use the Antibody at 1:5K dilution for 1 hour at room temperature.



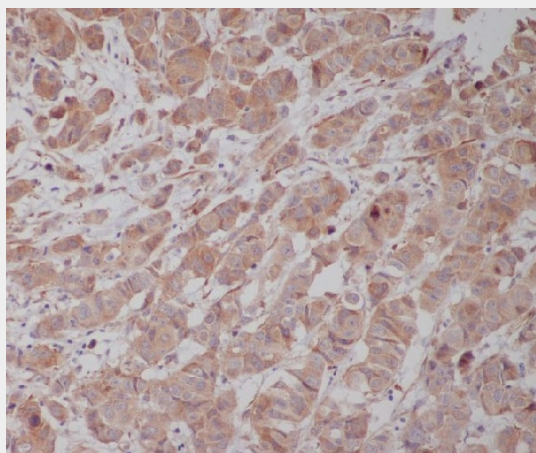
All lanes use the Antibody at 1:5K dilution for 1 hour at room temperature.



All lanes use the Antibody at 1:5K dilution for 1 hour at room temperature.



All lanes use the Antibody at 1:5K dilution for 1 hour at room temperature.



Immunohistochemical analysis of paraffin-embedded human breast cancer, using Tubulin gamma Antibody.