

Anti-Cyclophilin B PPIB Rabbit Monoclonal Antibody
Catalog # ABO14144**Specification****Anti-Cyclophilin B PPIB Rabbit Monoclonal Antibody - Product Information**

Application	WB
Primary Accession	P23284
Host	Rabbit
Isotype	Rabbit IgG
Reactivity	Rat, Human, Mouse
Clonality	Monoclonal
Format	Liquid

Description

Anti-Cyclophilin B PPIB Rabbit Monoclonal Antibody . Tested in WB application. This antibody reacts with Human, Mouse, Rat.

Anti-Cyclophilin B PPIB Rabbit Monoclonal Antibody - Additional Information

Gene ID 5479

Other Names

Peptidyl-prolyl cis-trans isomerase B, PPIase B, 5.2.1.8, CYP-S1, Cyclophilin B, Rotamase B, S-cyclophilin, SCYLP, PPIB, CYPB

Calculated MW

23743 MW KDa

Application Details

WB 1:500-1:2000

Subcellular Localization

Endoplasmic reticulum lumen. Melanosome. Identified by mass spectrometry in melanosome fractions from stage I to stage IV.

Contents

Rabbit IgG in phosphate buffered saline, pH 7.4, 150mM NaCl, 0.02% sodium azide and 50% glycerol, 0.4-0.5mg/ml BSA.

Immunogen

A synthesized peptide derived from human Cyclophilin B

Purification

Affinity-chromatography

Storage

Store at -20°C for one year. For short term storage and frequent use, store at 4°C for up to one month. Avoid repeated freeze-thaw cycles.

Anti-Cyclophilin B PPIB Rabbit Monoclonal Antibody - Protein Information

Name PPIB

Synonyms CYPB

Function

PPIase that catalyzes the cis-trans isomerization of proline imidic peptide bonds in oligopeptides and may therefore assist protein folding.

Cellular Location

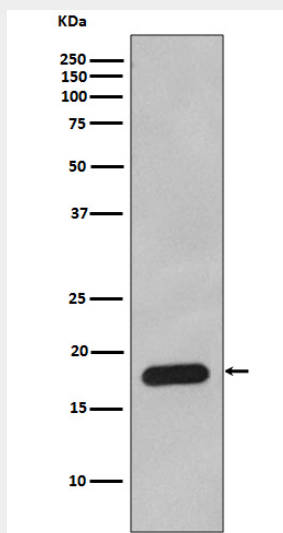
Virion. Note=(Microbial infection)

Anti-Cyclophilin B PPIB Rabbit Monoclonal Antibody - Protocols

Provided below are standard protocols that you may find useful for product applications.

- [Western Blot](#)
- [Blocking Peptides](#)
- [Dot Blot](#)
- [Immunohistochemistry](#)
- [Immunofluorescence](#)
- [Immunoprecipitation](#)
- [Flow Cytometry](#)
- [Cell Culture](#)

Anti-Cyclophilin B PPIB Rabbit Monoclonal Antibody - Images



Western blot analysis of Cyclophilin B expression in HepG2 cell lysate.