

Anti-Cytokeratin 8 KRT8 Rabbit Monoclonal Antibody Catalog # ABO14143

Specification

Anti-Cytokeratin 8 KRT8 Rabbit Monoclonal Antibody - Product Information

Application	WB, IHC, IF, ICC, IP, FC
Primary Accession	P05787
Host	Rabbit
Isotype	Rabbit IgG
Reactivity	Human, Mouse
Clonality	Monoclonal
Format	Liquid

Description

Anti-Cytokeratin 8 KRT8 Rabbit Monoclonal Antibody . Tested in WB, IHC, ICC/IF, IP, Flow Cytometry applications. This antibody reacts with Human, Mouse.

Anti-Cytokeratin 8 KRT8 Rabbit Monoclonal Antibody - Additional Information

Gene ID 3856

Other Names

Keratin, type II cytoskeletal 8, Cytokeratin-8, CK-8, Keratin-8, K8, Type-II keratin Kb8, KRT8, CYK8

Calculated MW

53704 MW KDa

Application Details

WB 1:10000-1:20000
IHC 1:50-1:200
ICC/IF 1:50-1:200
IP 1:50
FC 1:50

Subcellular Localization

Cytoplasm. Nucleus, nucleoplasm. Nucleus matrix.

Tissue Specificity

Observed in muscle fibers accumulating in the costameres of myoplasm at the sarcolemma membrane in structures that contain dystrophin and spectrin. Expressed in gingival mucosa and hard palate of the oral cavity..

Contents

Rabbit IgG in phosphate buffered saline, pH 7.4, 150mM NaCl, 0.02% sodium azide and 50% glycerol, 0.4-0.5mg/ml BSA.

Immunogen

A synthesized peptide derived from human Cytokeratin 8

Purification

Affinity-chromatography

Storage

Store at -20°C for one year. For short term storage and frequent use, store at 4°C for

up to one month. Avoid repeated
freeze-thaw cycles.

Anti-Cytokeratin 8 KRT8 Rabbit Monoclonal Antibody - Protein Information

Name KRT8

Synonyms CYK8

Function

Together with KRT19, helps to link the contractile apparatus to dystrophin at the costameres of striated muscle.

Cellular Location

Cytoplasm. Nucleus, nucleoplasm {ECO:0000250|UniProtKB:Q10758}. Nucleus matrix {ECO:0000250|UniProtKB:Q10758}

Tissue Location

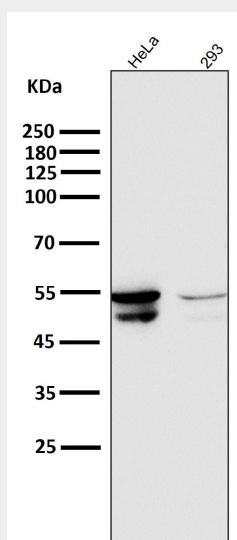
Observed in muscle fibers accumulating in the costameres of myoplasm at the sarcolemma membrane in structures that contain dystrophin and spectrin. Expressed in gingival mucosa and hard palate of the oral cavity.

Anti-Cytokeratin 8 KRT8 Rabbit Monoclonal Antibody - Protocols

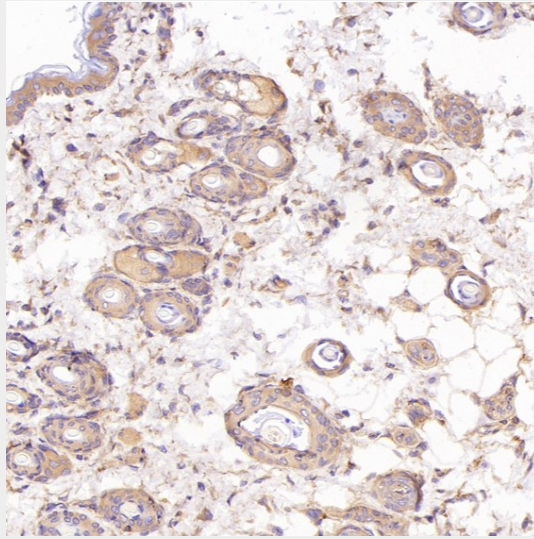
Provided below are standard protocols that you may find useful for product applications.

- [Western Blot](#)
- [Blocking Peptides](#)
- [Dot Blot](#)
- [Immunohistochemistry](#)
- [Immunofluorescence](#)
- [Immunoprecipitation](#)
- [Flow Cytometry](#)
- [Cell Culture](#)

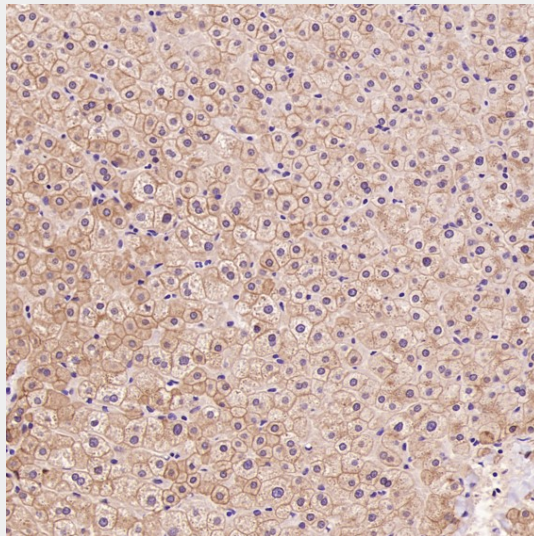
Anti-Cytokeratin 8 KRT8 Rabbit Monoclonal Antibody - Images



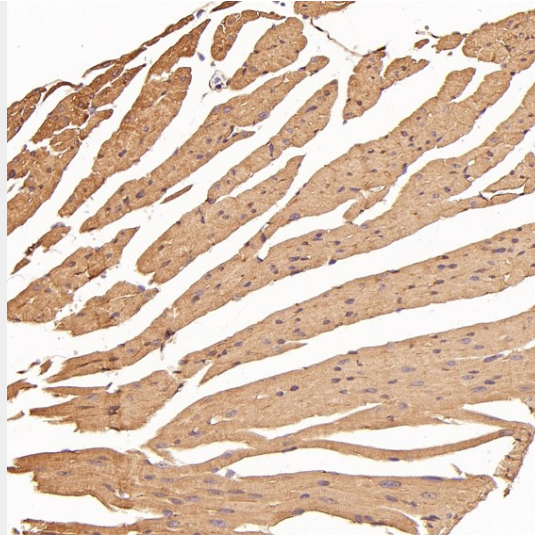
All lanes use the Antibody at 1:6W dilution for 1 hour at room temperature.



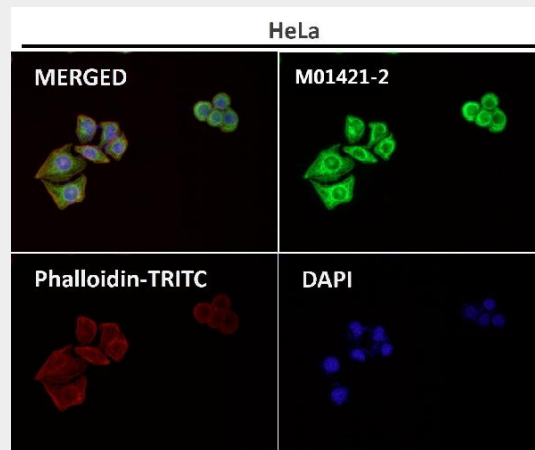
Immunohistochemical analysis of paraffin-embedded Rat skin, using the Antibody at 1:300 dilution.



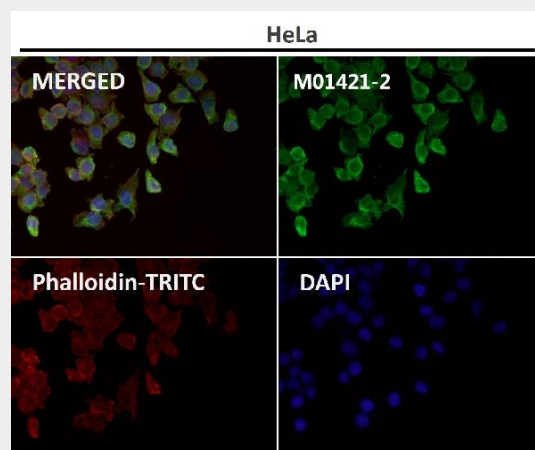
Immunohistochemical analysis of paraffin-embedded Human liver, using the Antibody at 1:600 dilution.



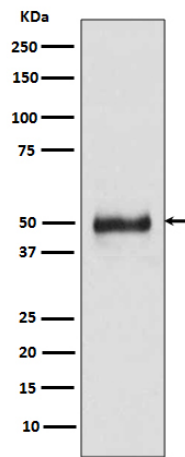
Immunohistochemical analysis of paraffin-embedded Mouse heart, using the Antibody at 1:300 dilution.



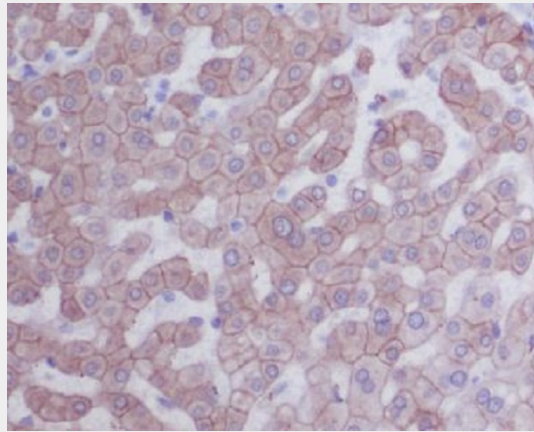
Immunofluorescent analysis using the Antibody at 1:150 dilution.



Immunofluorescent analysis using the Antibody at 1:500 dilution.



Western blot analysis of Cytokeratin 8 expression in HaCaT cell lysate.



Immunohistochemical analysis of paraffin-embedded human liver, using Cytokeratin 8 Antibody.