

## Anti-alpha Tubulin TUBA1B Rabbit Monoclonal Antibody Catalog # ABO14136

### Specification

---

#### Anti-alpha Tubulin TUBA1B Rabbit Monoclonal Antibody - Product Information

Application	WB, IHC, IF, ICC, IP, FC
Primary Accession	<a href="#">P68366</a>
Host	Rabbit
Isotype	Rabbit IgG
Reactivity	Rat, Human, Mouse
Clonality	Monoclonal
Format	Liquid

#### Description

Anti-alpha Tubulin TUBA1B Rabbit Monoclonal Antibody . Tested in WB, IHC, ICC/IF, IP, Flow Cytometry applications. This antibody reacts with Human, Mouse, Rat.

#### Anti-alpha Tubulin TUBA1B Rabbit Monoclonal Antibody - Additional Information

Gene ID 7277

#### Other Names

Tubulin alpha-4A chain, 3.6.5.-, Alpha-tubulin 1, Testis-specific alpha-tubulin, Tubulin H2-alpha, Tubulin alpha-1 chain, TUBA4A, TUBA1

#### Calculated MW

50152 MW KDa

#### Application Details

WB 1:1000-1:10000<br>IHC 1:50-1:200<br>ICC/IF 1:50-1:200<br>IP 1:50<br>FC 1:50

#### Subcellular Localization

Cytoplasm, cytoskeleton.

#### Contents

Rabbit IgG in phosphate buffered saline, pH 7.4, 150mM NaCl, 0.02% sodium azide and 50% glycerol, 0.4-0.5mg/ml BSA.

#### Immunogen

A synthesized peptide derived from human alpha Tubulin

#### Purification

Affinity-chromatography

Storage

Store at -20°C for one year. For short term storage and frequent use, store at 4°C for up to one month. Avoid repeated freeze-thaw cycles.

#### Anti-alpha Tubulin TUBA1B Rabbit Monoclonal Antibody - Protein Information

**Name** TUBA4A

**Synonyms** TUBA1

**Function**

Tubulin is the major constituent of microtubules, a cylinder consisting of laterally associated linear protofilaments composed of alpha- and beta-tubulin heterodimers. Microtubules grow by the addition of GTP-tubulin dimers to the microtubule end, where a stabilizing cap forms. Below the cap, tubulin dimers are in GDP-bound state, owing to GTPase activity of alpha-tubulin.

**Cellular Location**

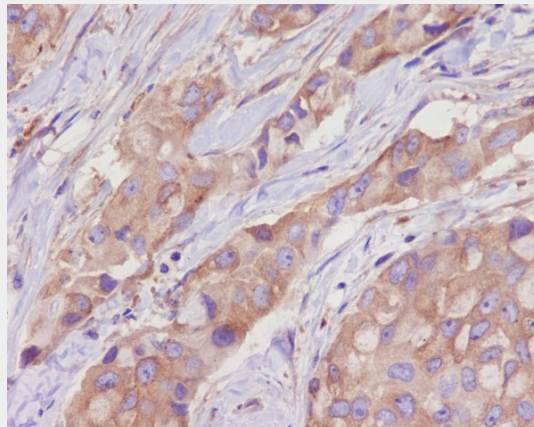
Cytoplasm, cytoskeleton.

**Anti-alpha Tubulin TUBA1B Rabbit Monoclonal Antibody - Protocols**

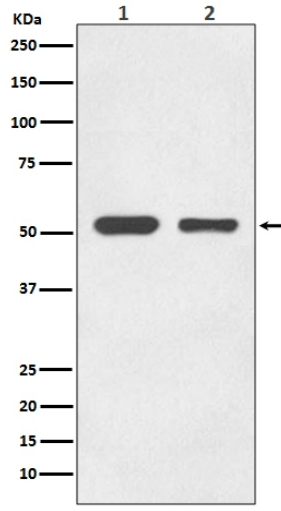
Provided below are standard protocols that you may find useful for product applications.

- [Western Blot](#)
- [Blocking Peptides](#)
- [Dot Blot](#)
- [Immunohistochemistry](#)
- [Immunofluorescence](#)
- [Immunoprecipitation](#)
- [Flow Cytometry](#)
- [Cell Culture](#)

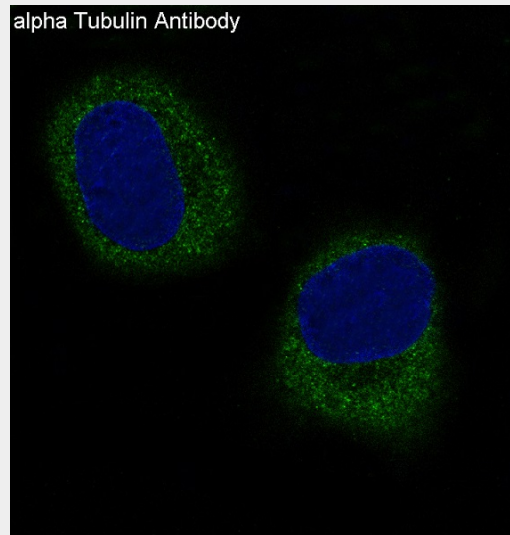
**Anti-alpha Tubulin TUBA1B Rabbit Monoclonal Antibody - Images**



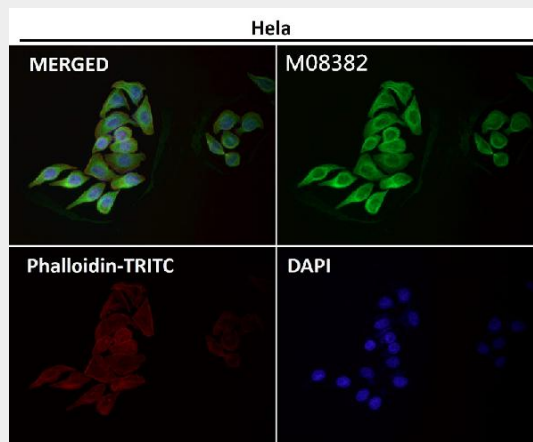
Immunohistochemical analysis of paraffin-embedded human breast cancer, using alpha Tubulin Antibody.



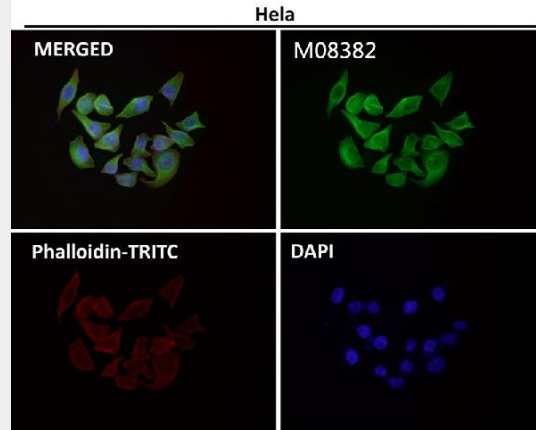
Western blot analysis of alpha Tubulin in (1) HeLa cell lysate; (2) HepG2 cell lysate; (3) NIH/3T3 cell lysate; (4) Mouse brain lysate; (5) C6 cell lysate.



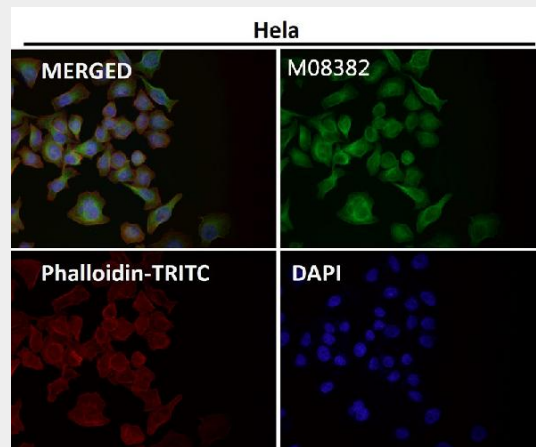
Immunofluorescent analysis of HeLa cells, using alpha Tubulin Antibody.



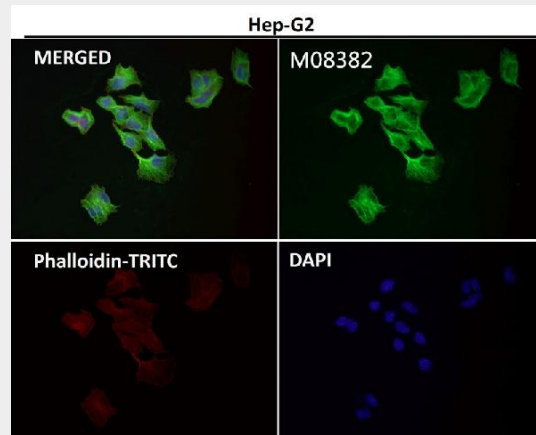
Immunofluorescent analysis using the Antibody at 1:50 dilution.



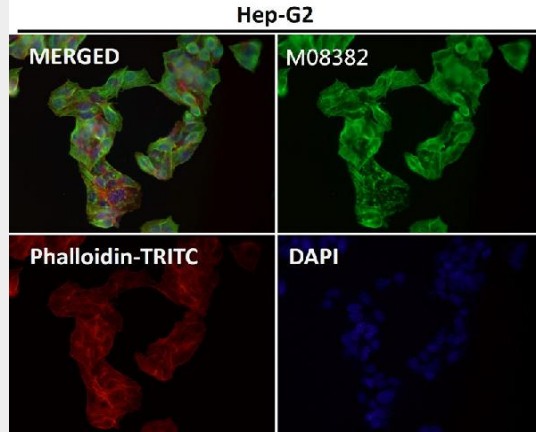
Immunofluorescent analysis using the Antibody at 1:150 dilution.



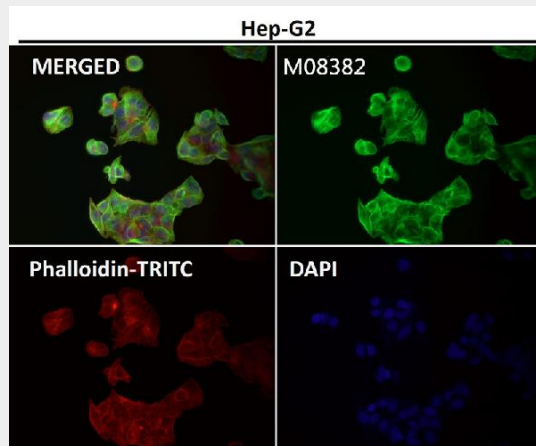
Immunofluorescent analysis using the Antibody at 1:500 dilution.



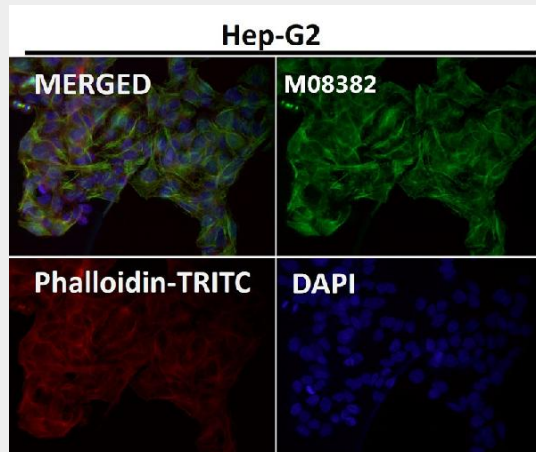
Immunofluorescent analysis using the Antibody at 1:50 dilution.



Immunofluorescent analysis using the Antibody at 1:50 dilution.



Immunofluorescent analysis using the Antibody at 1:150 dilution.



Immunofluorescent analysis using the Antibody at 1:500 dilution.